

180665

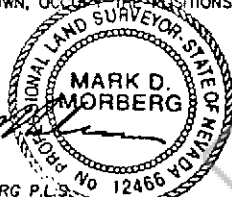
# CORNER RECORD

EUREKA COUNTY, NEVADA

## SURVEYOR'S CERTIFICATE

I, MARK D. MORBERG, A PROFESSIONAL LAND SURVEYOR LICENSED IN THE STATE OF NEVADA, CERTIFY THAT:

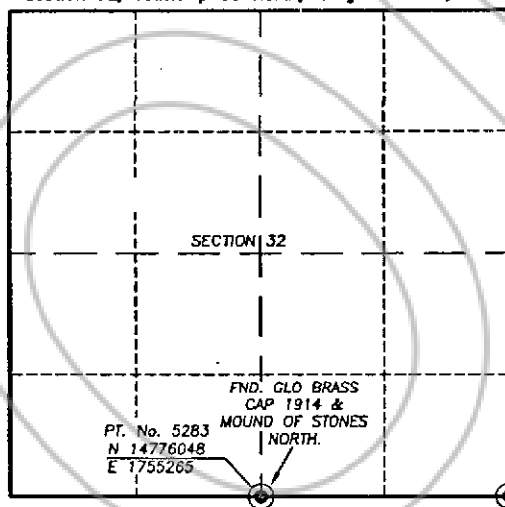
1. THIS CORNER RECORD REPRESENTS THE ESTABLISHMENT, RESTORATION, OR RECOVERY OF A CORNER OR ACCESSORY TO A CORNER CONDUCTED UNDER MY DIRECT SUPERVISION.
2. THE MONUMENT OR ACCESSORIES PERPETUATED LIE WITHIN SECTION 32, T.33 NORTH, R.48 EAST, M.D.M. EUREKA COUNTY, NEVADA AND THE ESTABLISHMENT OR RESTORATION WAS COMPLETED ON OCTOBER 18, 2000.
3. THIS CORNER RECORD HAS BEEN FILED PURSUANT TO NRS 329.140 OR 329.150 AND COMPLIES WITH THE PROVISIONS OF NAC 329.010 AND ANY LOCAL ORDINANCES IN EFFECT ON THE DATE THAT THE ESTABLISHMENT OR RESTORATION WAS COMPLETED.
4. THE MONUMENT OR WITNESS MONUMENT AND ACCESSORIES FOUND ARE OF THE CHARACTER SHOWN, OCCUPY THE POSITIONS INDICATED, AND ARE OF SUFFICIENT DURABILITY.



MARK D. MORBERG P.L.S.  
NEVADA NO. 12466

3/20/02

Section 32, Township 33 North, Range 48 East, MDM



NTS

### LEGEND

● FOUND CADASTRAL CORNER AS DESCRIBED

FND. GLO BRASS  
CAP 1914 &  
MOUND OF STONES  
NORTH.

PT. No. 5282  
N 14776050  
E 1757843

### BASIS OF COORDINATES

NAD 1983 (94 HARN ADJUSTMENT)  
UTM, ZONE 11, US SURVEY FEET

### NOTES:

1. THE ABOVE REFERENCED CORNER(S) WERE RECOVERED AS PART OF THE SIERRA PACIFIC POWER COMPANY FALCON PROJECT.

### RECORDER'S INFORMATION

BOOK 357 PAGE 089  
OFFICIAL RECORDS

Stantec Consulting Inc  
02 DEC 23 PM 4:32

RECEIVED BY EUREKA COUNTY  
REGISTRAR'S OFFICE  
FILE NO. FEES \$4.00



Stantec Consulting Inc  
1800 North Central Expressway, Suite 200  
Bloomington, Illinois 61811-1050  
Tel: (312) 850-0000  
Fax: (312) 850-0000  
www.stantec.com

JOB No. 80400400  
JANUARY 2002

SHEET 1 OF 1

180665