

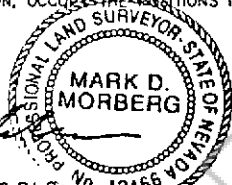
180669

### CORNER RECORD

EUREKA COUNTY, NEVADA

#### SURVEYOR'S CERTIFICATE

- I, MARK D. MORBERG, A PROFESSIONAL LAND SURVEYOR LICENSED IN THE STATE OF NEVADA, CERTIFY THAT:
1. THIS CORNER RECORD REPRESENTS THE ESTABLISHMENT, RESTORATION, OR RECOVERY OF A CORNER OR ACCESSORY TO A CORNER CONDUCTED UNDER MY DIRECT SUPERVISION.
  2. THE MONUMENT OR ACCESSORIES PERPETUATED LIE WITHIN SECTION 6, T.33 NORTH, R.49 EAST, M.D.M. EUREKA COUNTY, NEVADA AND THE ESTABLISHMENT OR RESTORATION WAS COMPLETED ON OCTOBER 18, 2000.
  3. THIS CORNER RECORD HAS BEEN FILED PURSUANT TO NRS 329.140 OR 329.150 AND COMPLIES WITH THE PROVISIONS OF NAC 329.010 AND ANY LOCAL ORDINANCES IN EFFECT ON THE DATE THAT THE ESTABLISHMENT OR RESTORATION WAS COMPLETED.
  4. THE MONUMENT OR WITNESS MONUMENT AND ACCESSORIES FOUND ARE OF THE CHARACTER SHOWN, OCCUPY THE POSITIONS INDICATED, AND ARE OF SUFFICIENT DURABILITY.

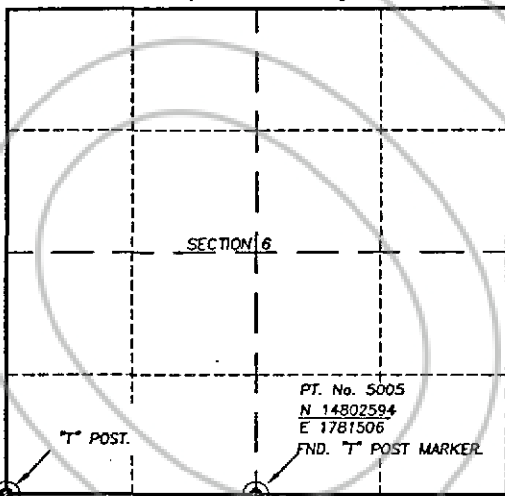


*Mark D. Morberg*  
 MARK D. MORBERG  
 NEVADA NO. 12466

MARK D. MORBERG P.L.S. No. 12466  
 NEVADA NO. 12466

*3/20/02*

Section 6, Township 33 North, Range 49 East, MDM



PT. No. 5003  
 N 14802482  
 E 1778725

"T" POST.

PT. No. 5005  
 N 14802594  
 E 1781506  
 FND. "T" POST MARKER.

NTS

#### LEGEND

● FOUND CADASTRAL CORNER AS DESCRIBED

#### BASIS OF COORDINATES

NAD 1983 (94 HARN ADJUSTMENT)  
 UTM, ZONE 11, US SURVEY FEET

#### NOTES:

1. THE ABOVE REFERENCED CORNER(S) WERE RECOVERED AS PART OF THE SIERRA PACIFIC POWER COMPANY FALCON PROJECT.

#### RECORDER'S INFORMATION

BOOK 357 PAGE 093  
 OFFICIAL RECORDS

*Slantec Consulting Inc.*  
 02 DEC 23 PM 4:32

EUREKA COUNTY, NEVADA  
 COUNTY RECORDS RECORDER  
 FILE NO. FEES 14.00

180669

T:\CS\slantec\slantec\com\slantec\13391-01-01-01.dwg 01/21/02



Slantec Consulting Inc.  
 1901 Gary Center Plaza, Suite 100  
 Reno, Nevada 89502 USA  
 Tel: (775) 784-1100  
 Fax: (775) 784-1101  
 www.slantec.com

JOB No. 80400400

JANUARY 2002

SHEET 1 OF 1