

180670

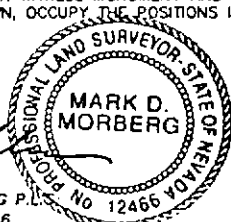
CORNER RECORD

EUREKA COUNTY, NEVADA

SURVEYOR'S CERTIFICATE

I, MARK D. MORBERG, A PROFESSIONAL LAND SURVEYOR LICENSED IN THE STATE OF NEVADA, CERTIFY THAT:

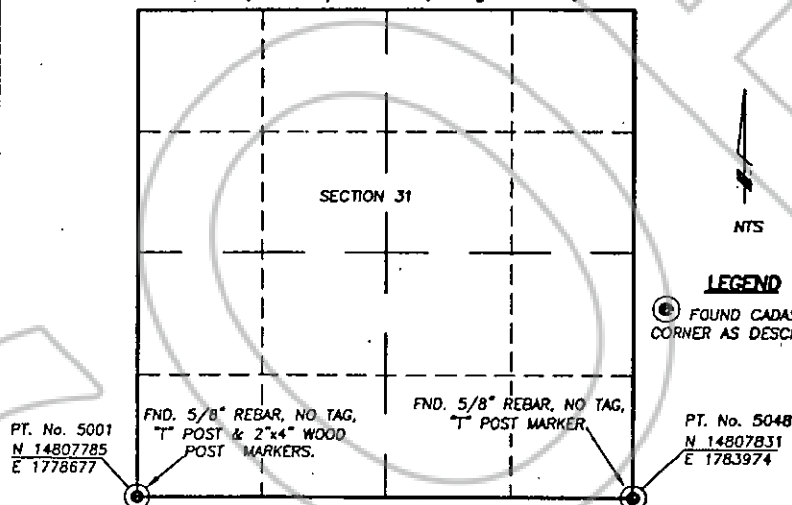
1. THIS CORNER RECORD REPRESENTS THE ESTABLISHMENT, RESTORATION, OR RECOVERY OF A CORNER OR ACCESSORY TO A CORNER CONDUCTED UNDER MY DIRECT SUPERVISION;
2. THE MONUMENT OR ACCESSORIES PERPETUATED LIE WITHIN SECTION 31, T.34 NORTH, R.49 EAST, M.D.M. EUREKA COUNTY, NEVADA AND THE ESTABLISHMENT OR RESTORATION WAS COMPLETED ON OCTOBER 18, 2000.
3. THIS CORNER RECORD HAS BEEN FILED PURSUANT TO NRS 329.140 OR 329.150 AND COMPLIES WITH THE PROVISIONS OF NAC 329.010 AND ANY LOCAL ORDINANCES IN EFFECT ON THE DATE THAT THE ESTABLISHMENT OR RESTORATION WAS COMPLETED.
4. THE MONUMENT OR WITNESS MONUMENT AND ACCESSORIES FOUND ARE OF THE CHARACTER SHOWN, OCCUPY THE POSITIONS INDICATED, AND ARE OF SUFFICIENT DURABILITY.



MARK D. MORBERG P.L.S.
NEVADA NO. 12466

3/20/02

Section 31, Township 34 North, Range 49 East, MDM



LEGEND

⊙ FOUND CADASTRAL
CORNER AS DESCRIBED

BASIS OF COORDINATES

NAD 1983 (94 HARN ADJUSTMENT)
UTM, ZONE 11, US SURVEY FEET

NOTES:

1. THE ABOVE REFERENCED CORNER(S) WERE RECOVERED AS PART OF THE SIERRA PACIFIC POWER COMPANY FALCON PROJECT.

RECORDER'S INFORMATION

BOOK 357 PAGE 094
OFFICIAL RECORDS
Stantec Consulting Inc.
02 DEC 23 PM 4:32

RECORDED
FILE NO. FEES 14.00

180670



Stantec Consulting Inc.
1000 Lakeside Center Parkway, Suite 100
P.O. Box 100000
Las Vegas, NV 89101-0000
Tel: (702) 636-2217
Fax: (702) 636-4717
www.stantec.com

JOB No. 80400400
JANUARY 2002

SHEET 1 OF 1

BOOK 357 PAGE 094