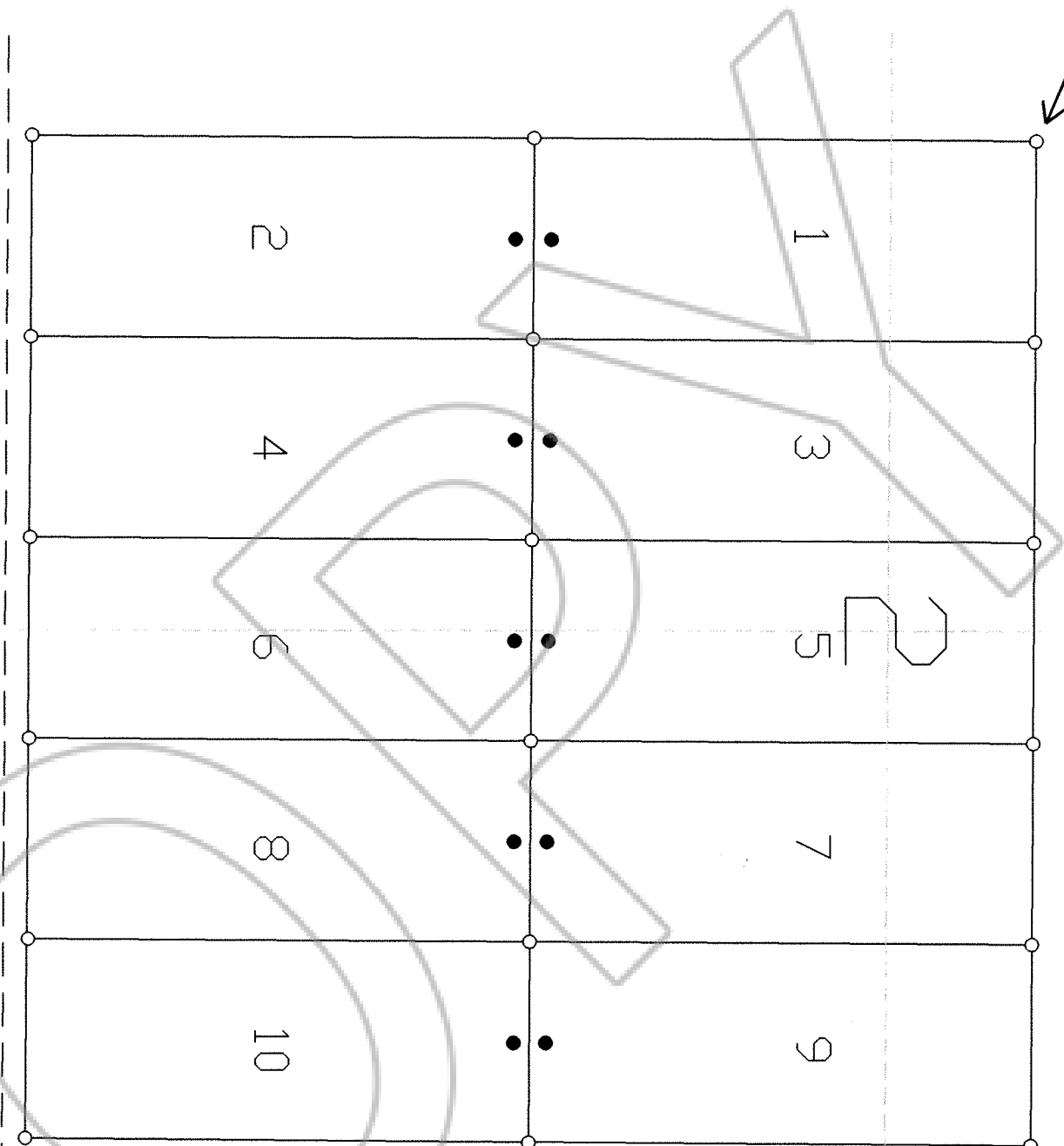
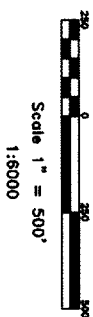


180899

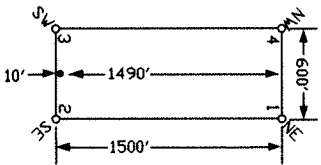


TIE POINT DATA:  
THE NW CORNER OF CC 1 IS LOCATED APPROXIMATELY  
19,248 FEET NORTH AND 14,667 FEET WEST OF THE  
NE CORNER OF SECTION 30, T.22N, R.51E, M.D.B.M.



LOCATION DATES:  
01/17/03 - CC 1-10

TYPICAL CLAIM



NOTES:  
LOCATION MONUMENTS SET 10' FROM CLAIM END  
CENTERLINES. ALL LOCATION MONUMENTS AND  
CLAIM POSTS ARE 2"x2"x4' WOODEN STAKES.

DASHED SECTION LINES INDICATE PROJECTED SECTIONS.  
FILED AT THE REQUEST OF Nevada Gold Ventures  
on Jan 23 20 03 at 18 min. past 1 P.M.  
RECORDS OF EUREKA COUNTY, NEVADA M. N. REBALEATI, Recorder

180899



Nevada Gold Ventures  
P.O. Box 900 ELKO, NV 89803  
CC Lode Claims 1-10  
T.22N., R.50E; Eureka County, Nevada

360 - 5th STREET  
PH: (775) 778-0686 ELKO, NV 89801 FAX: (775) 778-0687

DATE: January 2003  
DRAWN BY: [Signature]  
FOR SCALE: 1"=500'