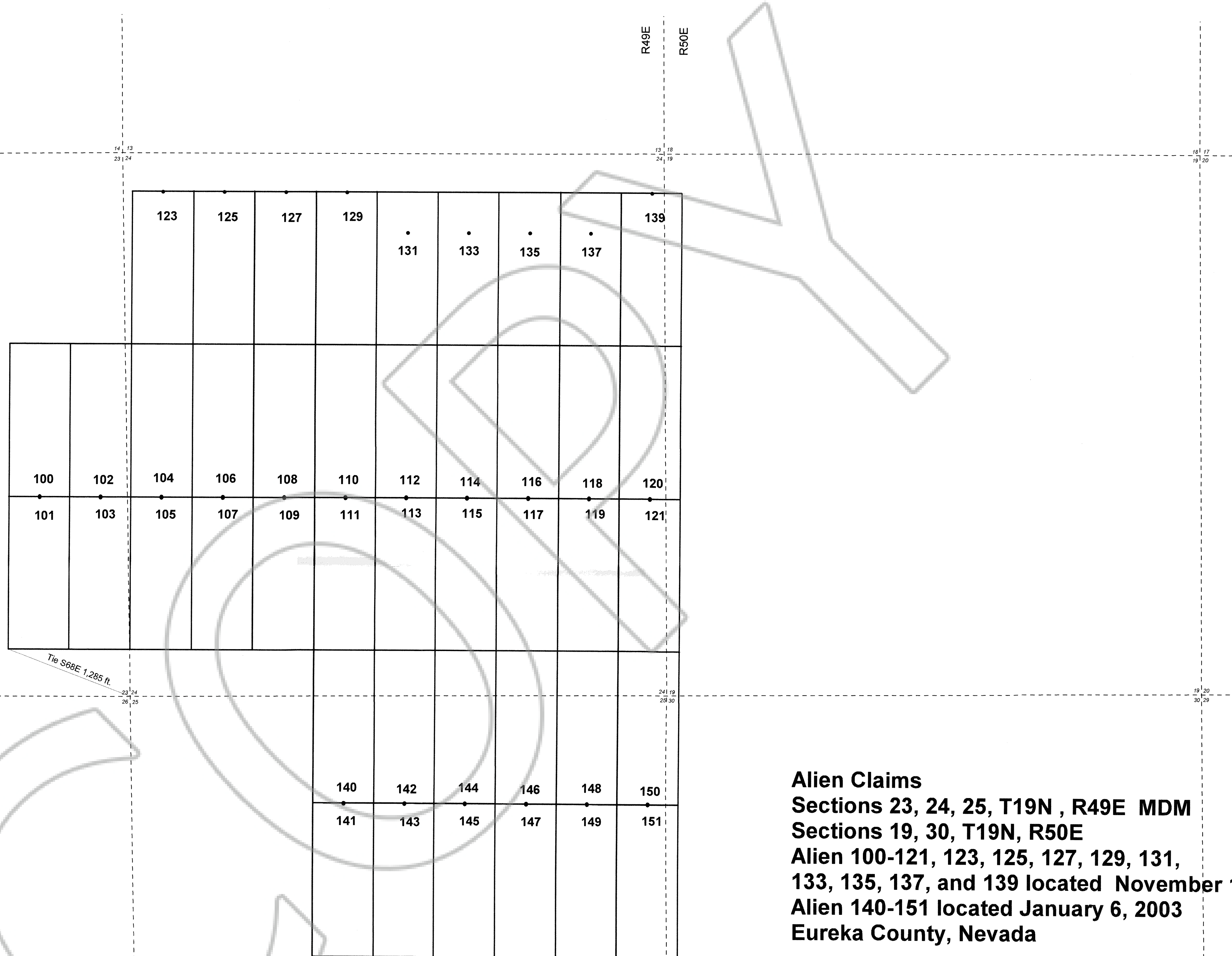


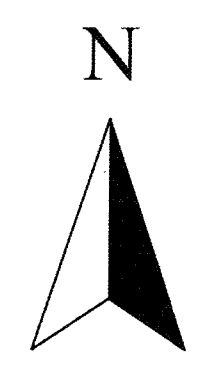
Location Monument
2" x 2" x 4' wood post
10 ft. in from end line

(except Alien 131, 133, 135, and 137, where Location Monument is 400 ft. south of North end line)



Alien Claims
Sections 23, 24, 25, T19N , R49E MDM
Sections 19, 30, T19N, R50E
Alien 100-121, 123, 125, 127, 129, 131,
133, 135, 137, and 139 located November 15, 2002
Alien 140-151 located January 6, 2003
Eureka County, Nevada

Located and owned by:
Lander Resources LLC
3645 Black Forest Lane
Sparks, Nevada 89434



Scale 1" = 500'