

The PR 1-24, 53-88, and 107-172 Lode Mining Claims are located in Sections 22, 23, 25-27, and 34-36 Township 25 North Range 49 East and Sections 1 & 2, Township 24 North Range 49 East Eureka County, Nevada

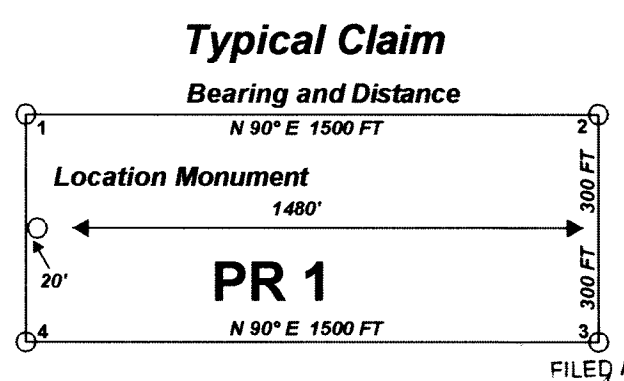
Locator:
Placer Dome Exploration Inc.
Agent: H.H. Tonking
240 South Rock Blvd Suite 117
Reno Nv.
89502

"PR" lode claims 107 - 140 were located on December 4, 2002
 "PR" lode claims 1 - 24, and 53-88 were located on December 5, 2002
 "PR" lode claims 145 - 172 were located on December 6, 2002
 "PR" lode claims 141 - 144 were located on February 7, 2003

Claim Location Map for PR 1-24, 53-88, and 107-172

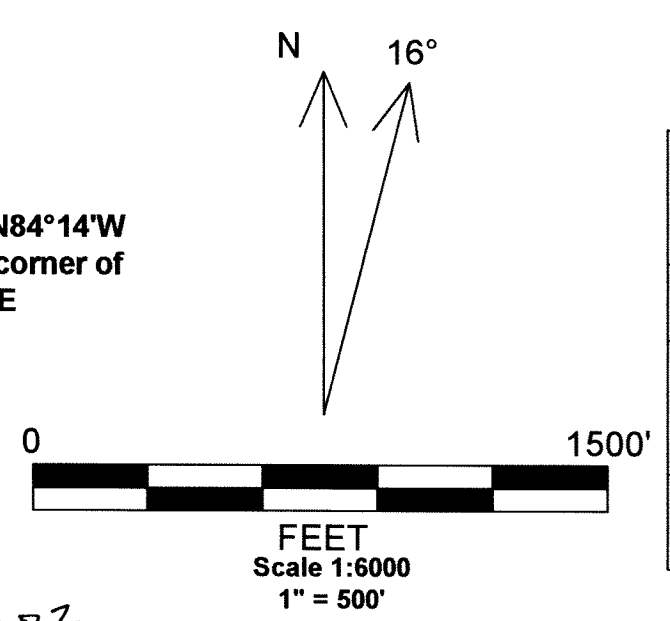
Sheet 1 of 2

Notes:
Location Monuments are set 20' from claim end lines except where noted otherwise. All location and corner monuments are 2" X 2" X 4' wooden posts with scribed metal tags.



Tie Point Data:
The NE Corner of PR 62 bears N84°14'W and is 2551' from the common corner of Sections 23/24/25/26/ T25N R49E

Surveyed Section Corner
 FILED AT THE REQUEST OF *Placer Dome Exploration Inc.*
 on *Feb 28* 20 *03*, at *2:39* mins. past *9:41* A.M.
 RECORDS OF EUREKA COUNTY, NEVADA M. N. REBALEATI, Recorder
 File No. *181188* Fee \$ *2824.00*



MINING CLAIM LOCATION MAP PR 1-24, 53-88, and 107-172 Lode Mining Claims Placer Dome Exploration Inc. Reno, Nevada
PR_ClaimMap1_2.dwg February 18, 2003 Drawn By: G.I.S. Land Services
Datum: 1927 Projection: Nevada State Plane Feet East

See Sheet 2 of 2

See Sheet 2 of 2

26

25

35

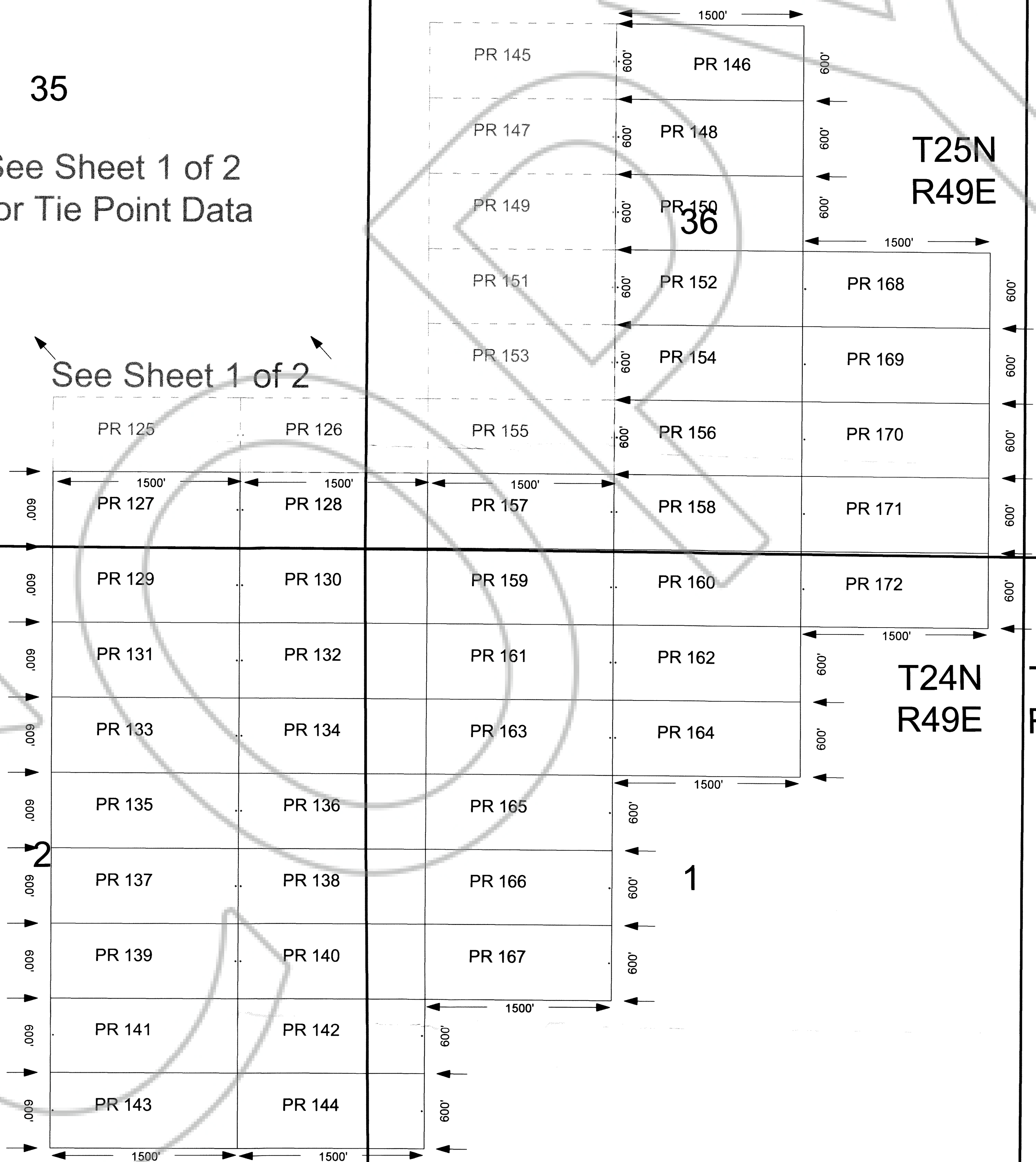
See Sheet 1 of 2
for Tie Point Data

See Sheet 1 of 2

T25N
T24N

T25N
R49E T25N
R50E

T24N
R49E T24N
R50E



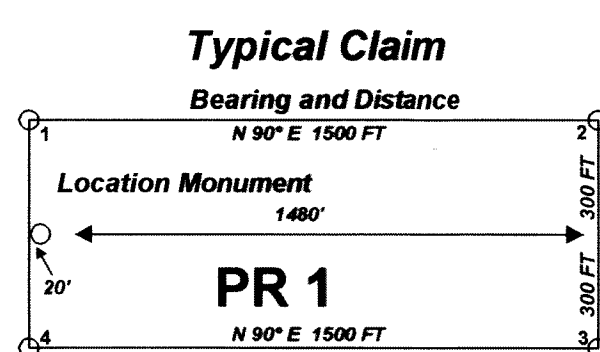
The PR 1-24, 53-88, and 107-172 Lode Mining Claims are located in Sections 22, 23, 25-27, and 34-36 Township 25 North Range 49 East and Sections 1 & 2 Township 24 North Range 49 East Eureka County, Nevada

Locator:
Placer Dome Exploration Inc.
Agent: H. H. Tonking
240 South Rock Blvd Suite 117
Reno Nv.
89502

"PR" lode claims 107 - 140 were located on December 4, 2002
 "PR" lode claims 1 - 24, and 53-88 were located on December 5, 2002
 "PR" lode claims 145 - 172 were located on December 6, 2002
 "PR" lode claims 141 - 144 were located on February 7, 2003

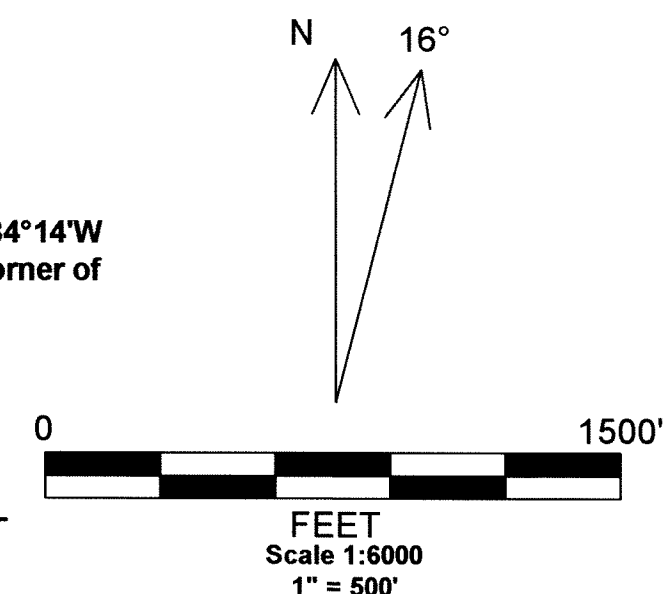
Claim Location Map for PR 1-24, 53-88, and 107-172 Sheet 2 of 2

Notes:
Location Monuments are set as shown from claim end lines except where noted otherwise. All location and corner monuments are 2" X 2" X 4" wooden posts with scribed metal tags.



Tie Point Data:
The NE Corner of PR 62 bears N84°14'W and is 2551' from the common corner of Sections 23/24/25/26/ T25N R49E

Surveyed Section Corner
 FILED AT THE REQUEST OF *Placer Dome Exploration Inc.*
 on *Feb 28 2003* at *11:39* a.m. past *5 A* M.
 RECORDS OF EUREKA COUNTY, NEVADA M. N. REBALEATI, Recorder
 File No. **164168** Fee \$



MINING CLAIM LOCATION MAP PR 1-24, 53-88, and 107-172 Lode Mining Claims
Placer Dome Exploration Inc. Reno, Nevada
PR ClaimMap2_2.dwg February 18, 2003 Drawn By: G.I.S. Land Services
Datum: 1927 Projection: Nevada State Plane Feet East