

20

21

29

28

32

33

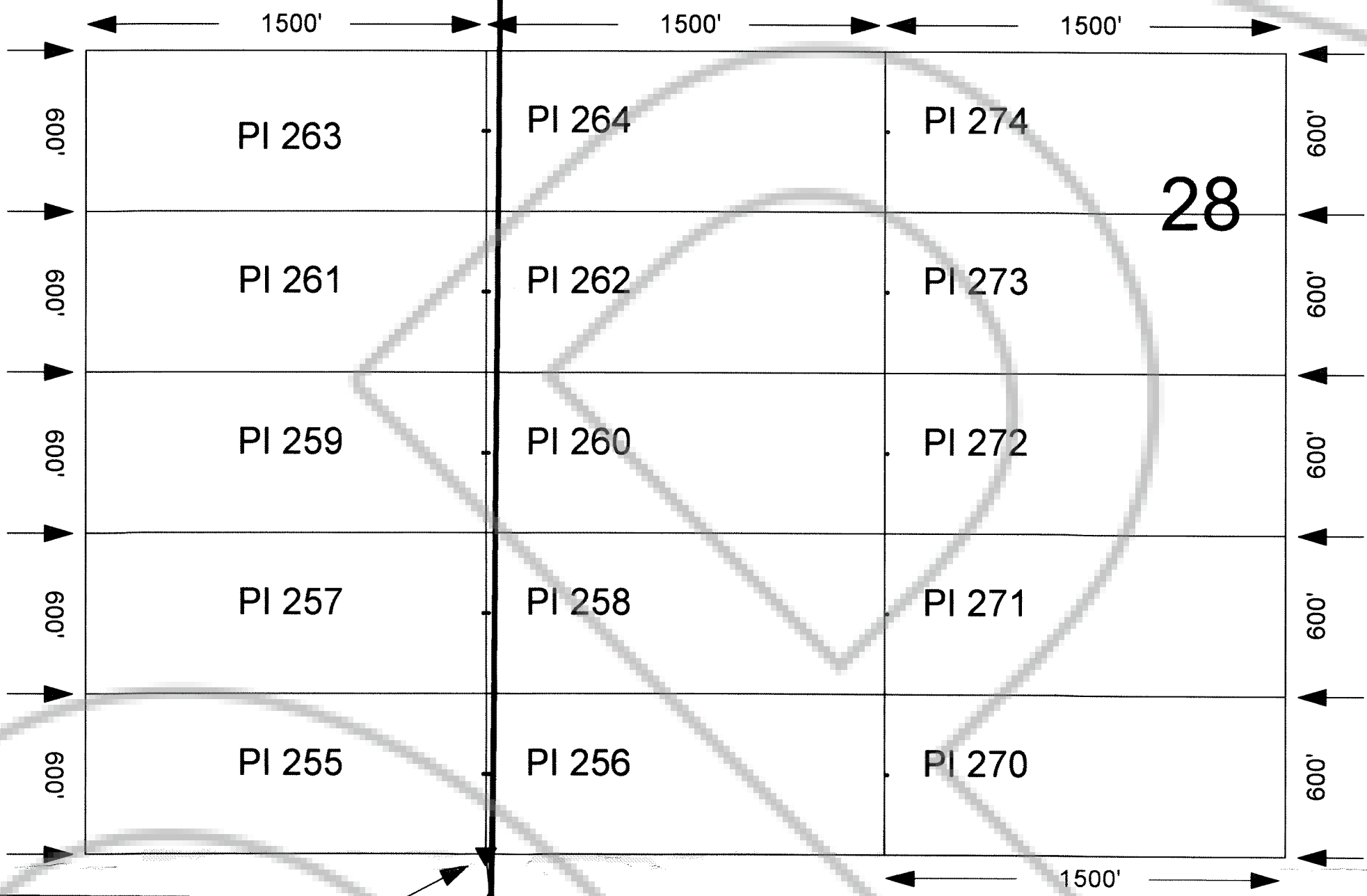
T25N  
R49E

T24N  
R49E

4

5

The SE Corner of PI 255 &  
the SW Corner of PI 256  
bear N6°47'W and are 183'  
from the common corner of  
sections 28/29/32/33.

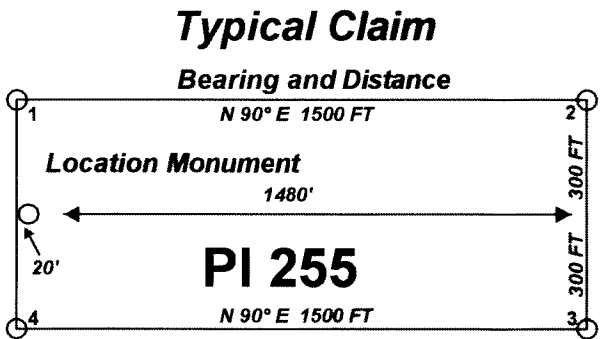


Claim Location Map for PI 255 - 264, and PI 270 - 274

The PI 255 - 264  
and PI 270 - 274  
Lode Mining Claims are located in  
Sections 28 and 29  
Township 25 North  
Range 49 East  
Eureka County, Nevada  
"PI" lode claims 255 - 264 and 270 - 274  
were located on December 11, 2002

Locator:  
Placer Dome Exploration Inc.  
Agent: H.H. Tonking  
240 South Rock Blvd Suite 117  
Reno Nv. 89502

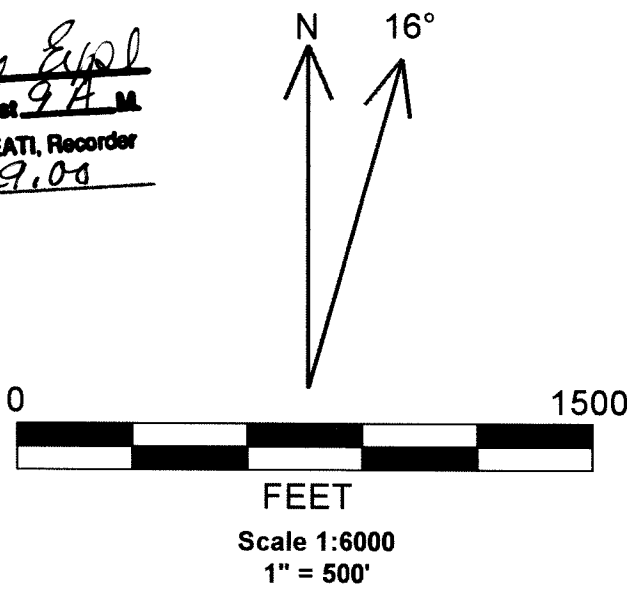
Notes:  
Location Monuments are set 20' from  
claim end lines except where noted  
otherwise. All location and corner  
monuments are 2" X 2"X 4' wooden  
posts with scribed metal tags.



FILED AT THE REQUEST OF Placer Dome Exploration Inc.  
on July 28 2003 at 5:58 mins. past 9:11 A.M.  
RECORDS OF EUREKA COUNTY, NEVADA M. N. REBALEATI, Recorder  
File No. 181204 Fee \$ 249.00

▼ Tie Point Data:  
The SE Corner of PI 255 & the SW  
Corner of PI 256 bear N6° 47' W and are  
183' from the Common Corner of  
sections 28/29/32/33 T 25N R49E.

▲ Surveyed Section Corner



MINING CLAIM LOCATION MAP PI 255-264 and PI 270-274 Lode Mining Claims Placer Dome Exploration Inc. Reno, Nevada
PI Claim_Map.dwg February 18, 2003 Drawn By: G.I.S. Land Services
Datum: 1927 Projection: Nevada State Plane Feet East