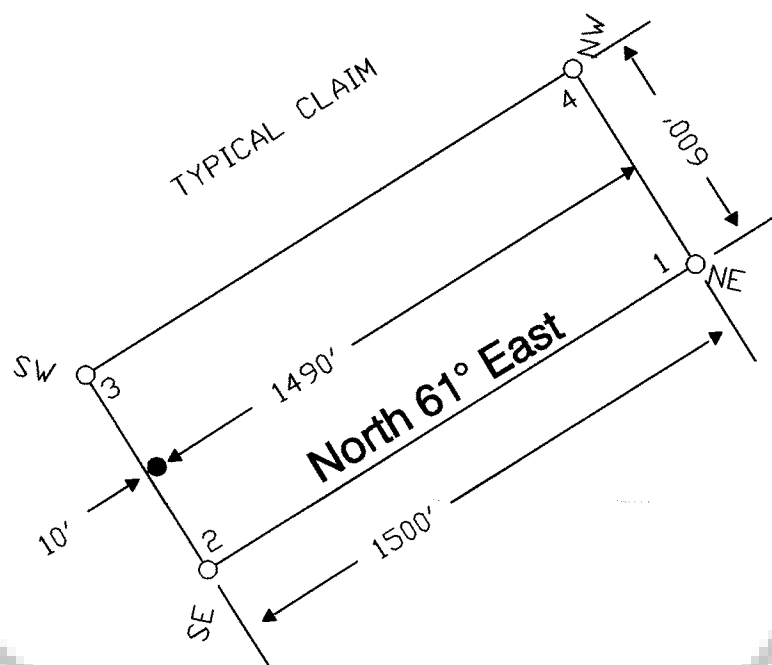


TIE POINT DATA:  
THE SOUTHEAST CORNER OF NH 19 LIES APPROXIMATELY  
3,129 FEET WEST AND 13,682 FEET NORTH OF THE SOUTHWEST  
CORNER OF SECTION 20, T.22N., R.51E., M.D.B.M.




LOCATION DATES:  
12/27/02 - NH 1-20

NOTES:  
LOCATION MONUMENTS SET 10' FROM CLAIM END  
CENTERLINES. ALL LOCATION MONUMENTS AND CLAIM  
POSTS ARE 2"x2"x4' WOODEN STAKES.

DASHED SECTION LINES INDICATE PROJECTED SECTIONS.

FILED AT THE REQUEST OF Nevada Gold Ventures  
on Jan 4 20 03, at 4 mins. past 4 P.M.  
RECORDS of EUREKA COUNTY, NEVADA M. N. REBALEATI, Recorder  
File No. 181336 Fee \$ 304.00

 369 - 5TH STREET ELKO, NV 89801 PH: (775) 778-0668 FAX: (775) 778-0687	Nevada Gold Ventures 369 - 5th Street, Elko, NV 89801 NH Lode Claims 1-20 T.22N., R.50&51E., Eureka County, Nevada	
	DATE: January 2002	ACAD FILE NAME clients\km\nh.claims PLOT SCALE 1"=500'

DRAWN BY  
sms