

16

15

17 16
20 21

16 15
21 22

15
22

The NW Corner of PP 174 bears S62°05'W and is 92' from the common quarter corner of Sections 16/21 T25N R49E

T25N
R49E

21

22

20 21
29 28

22
27

28

27

29 28
32 33

27
34

Claim Location Map for PP 173-177, 275-311, 313 and 315

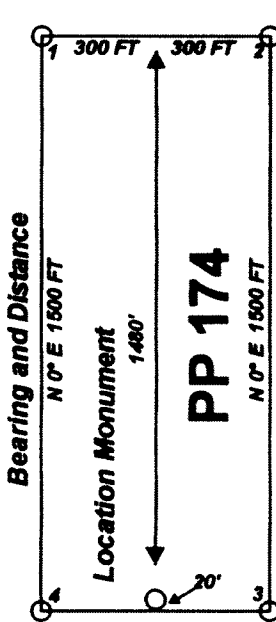
The PP 173 - 177, 275-311, 313 and 315 Lode Mining Claims are located in Sections 21, 22, 27, and 28 Township 25 North Range 49 East

Eureka County, Nevada

Notes:
Location Monuments are set 20' from claim end lines except where noted otherwise. All location and corner monuments are 2" X 2" X 4' wooden posts with scribed metal tags.

"PP" lode claims 275 - 309 were located on February 4, 2003
"PP" lode claims 310, 311, 313, 315 were located on February 5, 2003
"PP" lode claims 173 - 177 were located on February 11, 2003

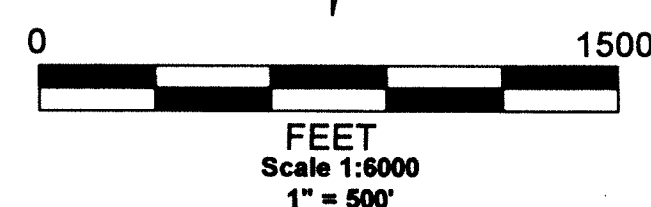
Locator:
Placer Dome Exploration Inc.
Agent: H.H. Tonking
240 South Rock Blvd Suite 117
Reno Nv.
89502



Typical Claim

▼ Tie Point Data:
The NW Corner of PP 174 bears S62°05'W and is 92' from the common corner of Sections 16/21 T25N R49E

▲ Surveyed Section Corner



FILED AT THE REQUEST OF *Placer Dome Expl*
on *April 18 20 03* at *3:00* mins past *3:00* P.M.
RECORDS OF EUREKA COUNTY, NEVADA M. N. REBALEATI, Recorder
File No. **181655** Fee \$ *1264.00*

MINING CLAIM LOCATION MAP PP 173-177, 275-311, 313 and 315 Lode Mining Claims
Placer Dome Exploration Inc. Reno, Nevada
PP_ClaimMap.dwg March 10, 2003 Drawn By: G.I.S. Land Services
Datum: 1927 Projection: Nevada State Plane Feet East