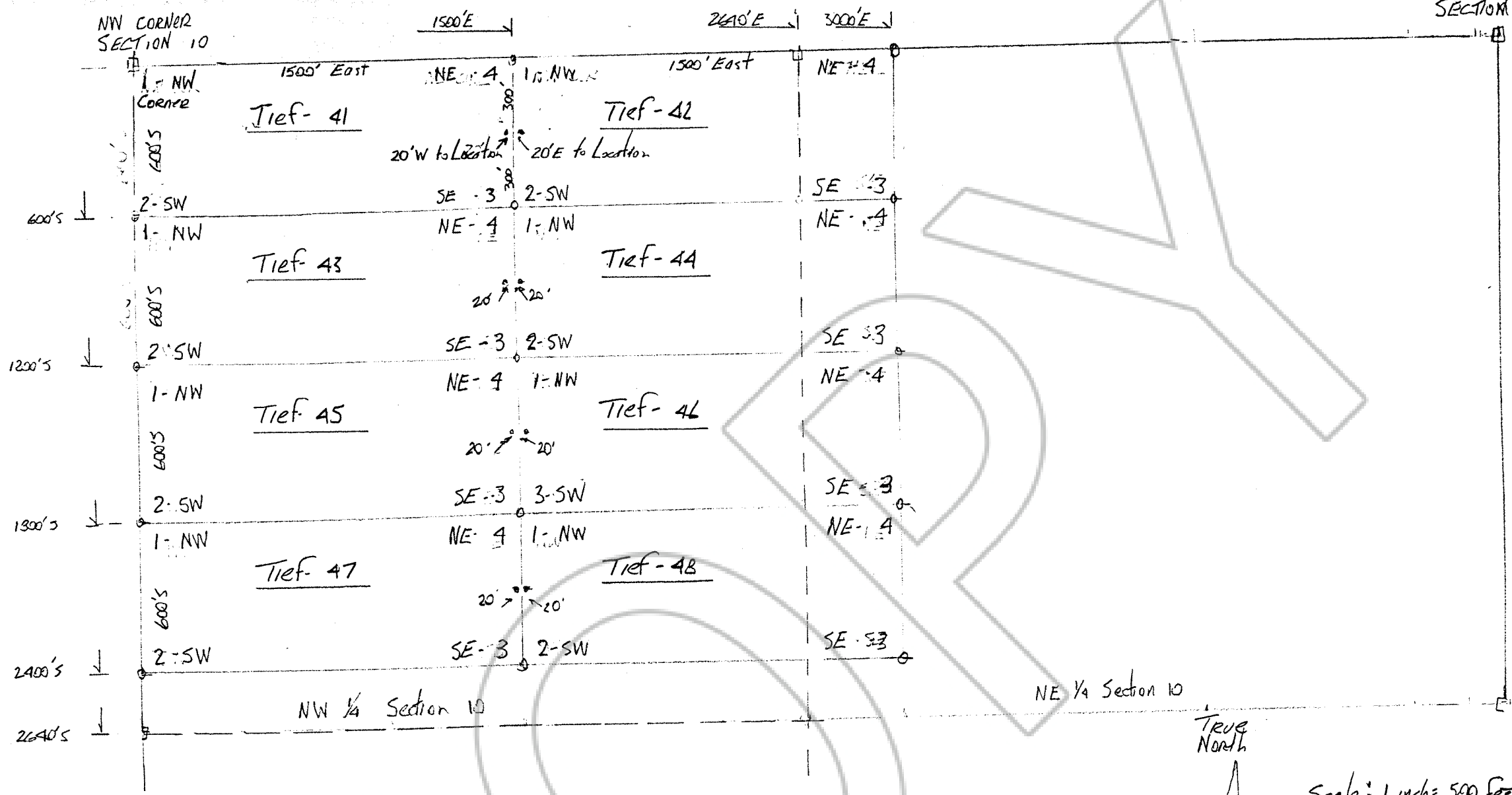


NE CORNER SECTION 10



TIEF CLAIMS # 41 thru # 48 Lode Claims  
 NW 1/4 and NE 1/4 Section 10, T 31 N, R 48 E, MDM  
 Eureka County, Nevada  
 Located by Henry Neugebauer, 2488 West 49th Ave, Vancouver, B.C., Canada, V6M-2V3  
 Located March 13, 2003 Note: all monuments are 1 1/2 x 1 1/2 wooden posts 4 feet long

Scale: 1 inch = 500 Feet  
 FILED AT THE REQUEST OF Henry Neugebauer  
 on June 9 20 03, at 7 mins. past 3 P. M.  
 RECORDS of EUREKA COUNTY, NEVADA M. N. REBALEATI, Recorder  
 File No. 181987 Fee \$ 124.00