

TIE POINT DATA:
THE NORTHWEST CORNER OF GBN 1 IS APPROXIMATELY
10,094 FEET WEST AND 1,412 FEET SOUTH OF THE NORTHEAST
CORNER OF SECTION 28, T.23N., R.49E., M.D.B.M.

| | | |
|---|----|----|
| 1 | 3 | 5 |
| : | : | : |
| 2 | 4 | 6 |
| 7 | 9 | 11 |
| : | : | : |
| 8 | 10 | 12 |

29

32

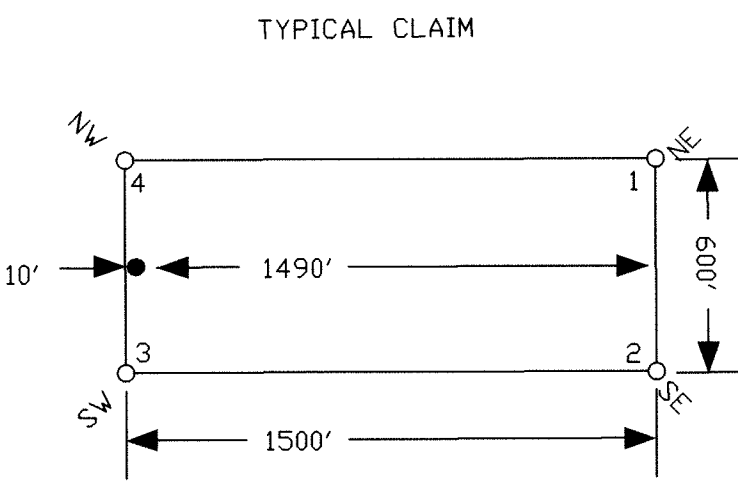
TIE POINT DATA:
THE NORTHWEST CORNER OF GBN 13 IS APPROXIMATELY
8,852 FEET WEST AND 8,907 FEET SOUTH OF THE NORTHEAST
CORNER OF SECTION 28, T.23N., R.49E., M.D.B.M.

| | |
|----|----|
| 13 | 15 |
| : | : |
| 14 | 16 |

T.23N.
T.22N.

LOCATION DATES:
05/07/03 - GBN 1-16

5



NOTES:
LOCATION MONUMENTS SET 10' FROM CLAIM END
CENTERLINES. ALL LOCATION MONUMENTS AND
CLAIM POSTS ARE 2"x2"x4' WOODEN STAKES.
DASHED SECTION LINES INDICATE PROJECTED SECTIONS.

FILED AT THE REQUEST OF Nevada Gold Ventures
on July 8 2003 at 9 mins. past 10 M.
RECORDS OF EUREKA COUNTY, NEVADA M. N. REBALEATI, Recorder
File No. 182181 Fee \$ 246.00



310 SILVER STREET
PH: (775) 778-0668 ELKO, NV 89801 FAX: (775) 778-0687

Locator:
Nevada Gold Ventures
369 - 5th Street Elko, NV 89801
GBN 1-16 Lode Claims
T.22&23N.,R.49E.; Eureka County, Nevada

| | | |
|--------------------|--|-----------------|
| DATE: June 2003 | ACAD FILE NAME clients\km\gbn_clms.dwg PLOT SCALE 1"=500' | DRAWN BY sms |
|--------------------|--|-----------------|