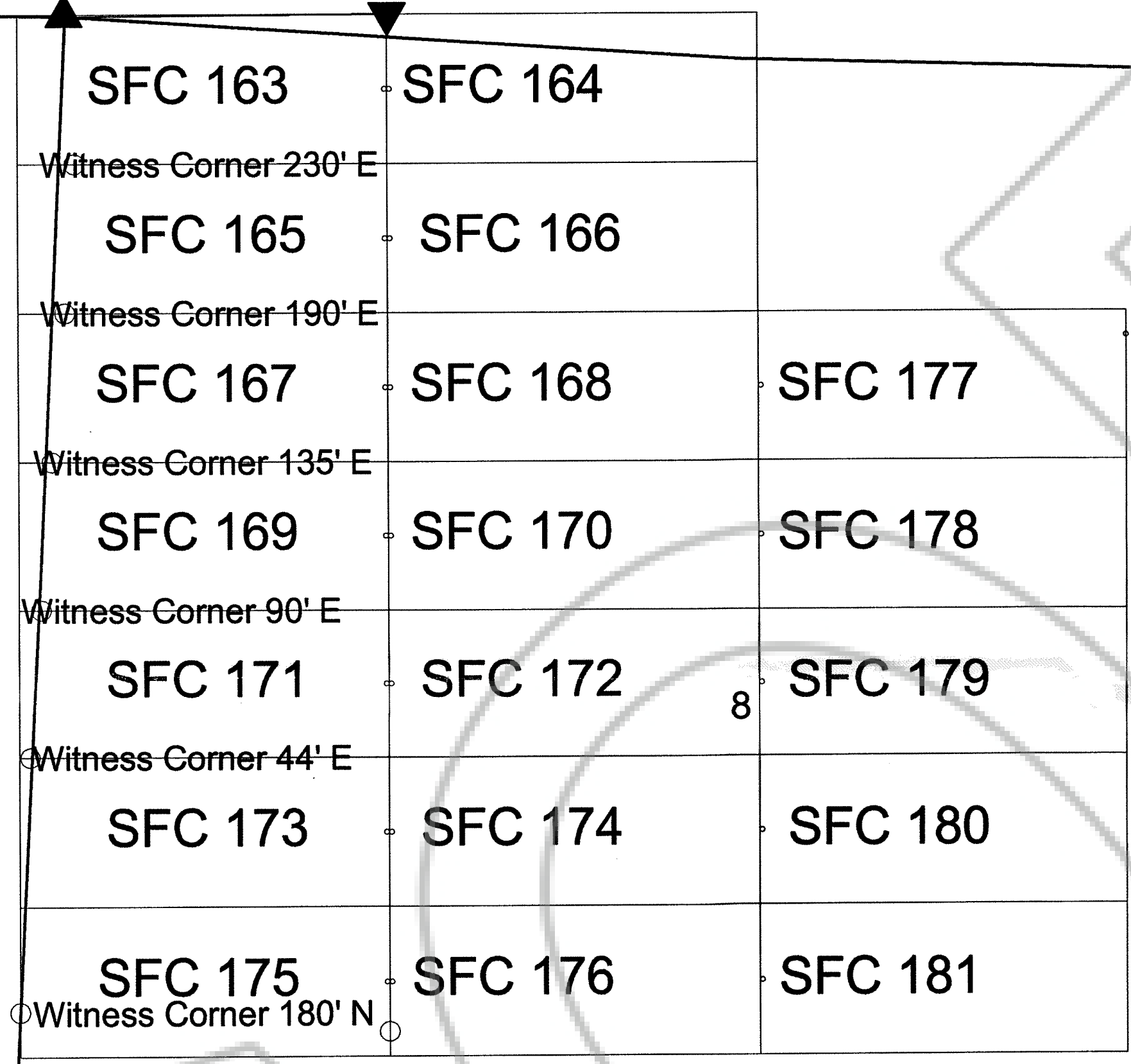


**Claim Location Map for SFC 163 - 181**  
**Map 1 of 1** 182214

"SFC" lode claims 163 - 181 were located on May 6, 2003

Sections 5 thru 9  
 Township 28 North  
 Range 48 East  
 Eureka County, Nevada

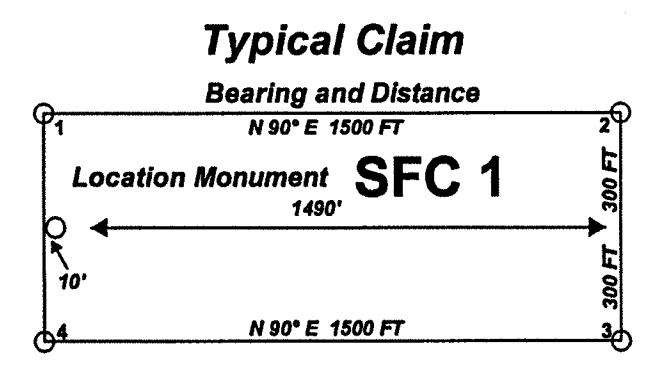
The NW Corner of SFC 163 bears N89°41'E and is 1304' from the common corner of Sections 5/6/7/8 T29N R48E



Witness Corner 100' S

Witness Corner 100' N

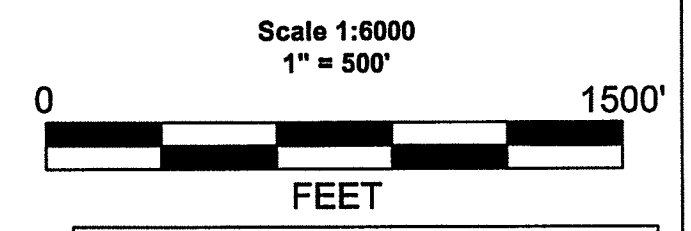
Sheet 1 of 1



**Notes:**  
 Location Monuments are set 10' from claim end lines except where noted otherwise. All claims measure 1500' by 600' unless otherwise noted. All location and corner monuments are 2" X 2" X 4' wooden posts with scribed metal tags.

▼ Tie Point

▲ Surveyed Section Corner



FILED AT THE REQUEST OF *Dayton Mining*  
 on *July 11* 20 *03* at *3:39* mins. past *1 P*<sup>M</sup>  
 RECORDS OF EUREKA COUNTY, NEVADA M. N. REBALEATI, Recorder  
 File No. **182214** Fee \$ *249.00*

Locator:  
 Dayton Mining (U.S.)  
 Agent: H.H. Tonking  
 3550 Barron Way #12B  
 Reno Nv. 89511

MINING CLAIM LOCATION MAP SFC 163 - 181 Lode Mining Claims
Dayton Mining (U.S.) 3550 Barron Way #12B Reno, Nevada 89511
SFC_ClaimMap_1of1.dwg June 28, 2003 Drawn By: G.I.S. Land Services
Surveyed By: T&T Exploration L.L.C. Datum: 1927 Projection: Nevada State Plane Feet East

6

5

4

7

8

9

18

17

16