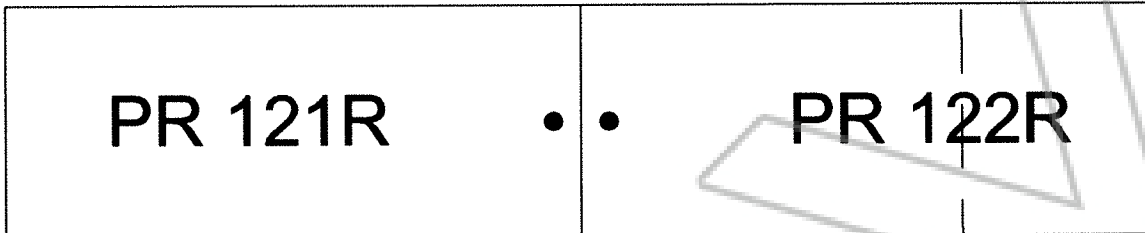
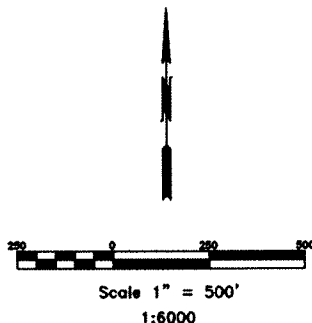


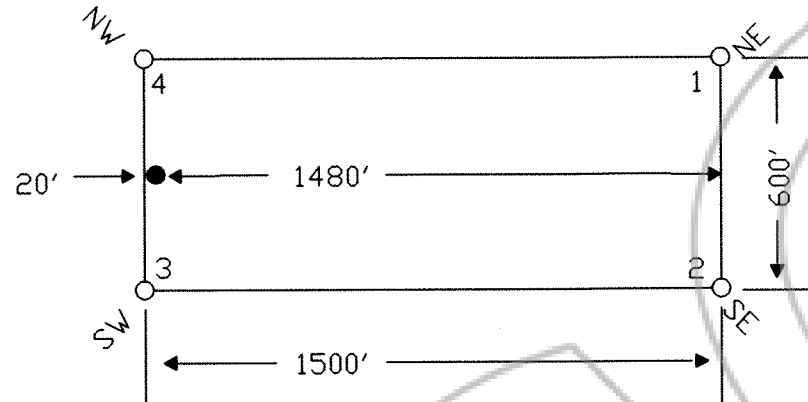
35

36



TIE POINT DATA:
THE NORTHEAST CORNER OF PR 122R LIES APPROXIMATELY
2400 FEET NORTH AND 500 FEET EAST OF THE SOUTHEAST
CORNER OF SECTION 35, T.25N., R.49E., M.D.B.M.


TYPICAL CLAIM



LOCATION DATES:
07/16/03 - PR 121R-122R

NOTES:
LOCATION MONUMENTS SET 20' FROM CLAIM END
CENTERLINES. ALL LOCATION MONUMENTS AND CLAIM
POSTS ARE 2"x2"x4' WOODEN STAKES.
DASHED SECTION LINES INDICATE PROJECTED SECTIONS.

FILED AT THE REQUEST OF *Placer Dome Exploration*
on *Aug 28* 20*03*, at *45* mins. past *4 P.M.*
RECORDS OF EUREKA COUNTY, NEVADA M. N. REBALEATI, Recorder
File No. *182427* Fee \$ *34.00*

 369 - 5th STREET PH: (775) 778-0668 ELKO, NV 89801 FAX: (775) 778-0687	DATE: August 2003	CLAIM FILE NAME: PR 121R-122R	DRAWN BY: [Signature]
	Placer Dome Exploration Inc. 240 S. Rock Blvd., Ste 117, Reno, NV 89502 PR 121R-122R Lode Claims T.25N., R.49E.; Eureka County, Nevada		