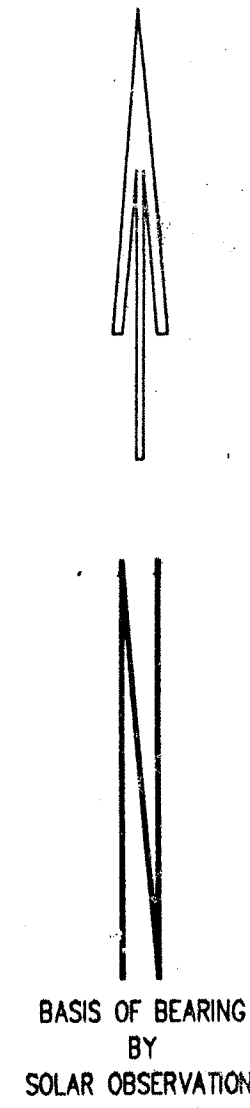
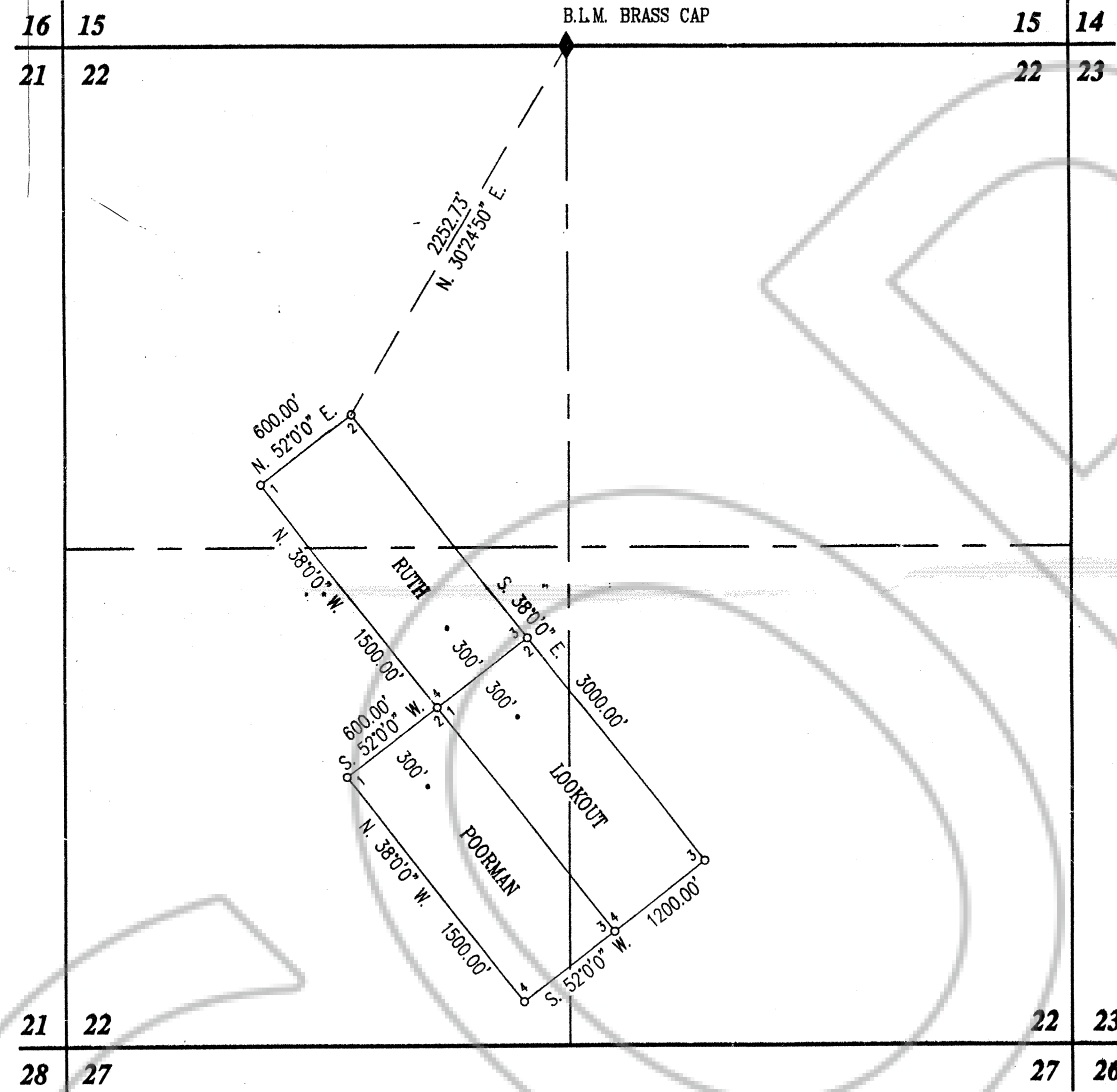


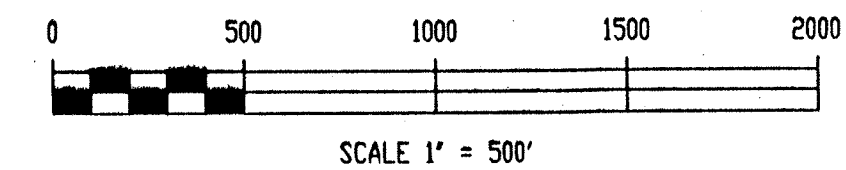
T.35 N., R.50 E., M.D.B. & M.

CORNER FOUND:
B.L.M. BRASS CAP



NOTES

1. All Lode claims are 600 feet by 1500 feet with Location Monuments 300 feet from the end lines unless noted.
2. All corners and location monuments are 2" x 2" x 4' long wood posts
3. The claims were located by: *JAMES A. MOORE*
230 Brooklawn Dr.
Springer, N.V. 89715
4. LOOKOUT was located on RUTH and POORMAN were located on 13th OF August
5. There are a total of 3 claims.



MAP SHOWING
RUTH, POORMAN & LOOKOUT
LODE MINING CLAIMS

LOCATED BY

IN
T.35 N., R.50 E., M.D.B. & M.
EUREKA COUNTY, NEVADA

FILED AT THE REQUEST OF *James A. Moore*
on *15* of *03* at *16* min. past *12* P.M.
RECORDS OF EUREKA COUNTY, NEVADA M. N. REBALEATI, Recorder
File No. *162468* Fee \$ *49.00*