

SEE PAGE 2

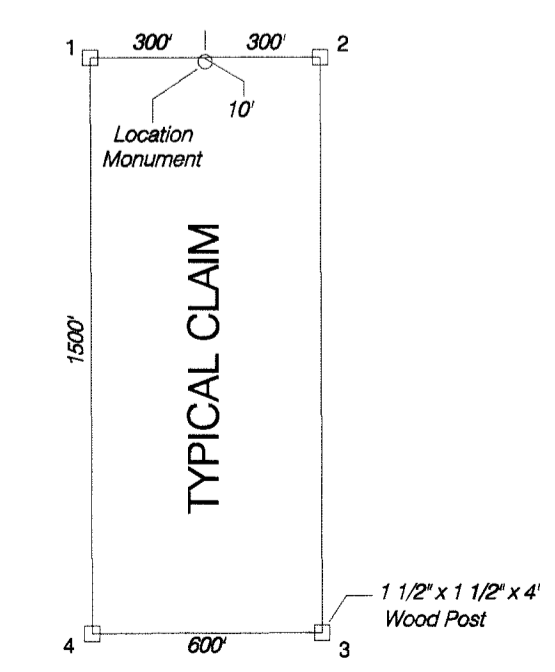
R49E

MAP OF THE McC LODGE MINING CLAIMS

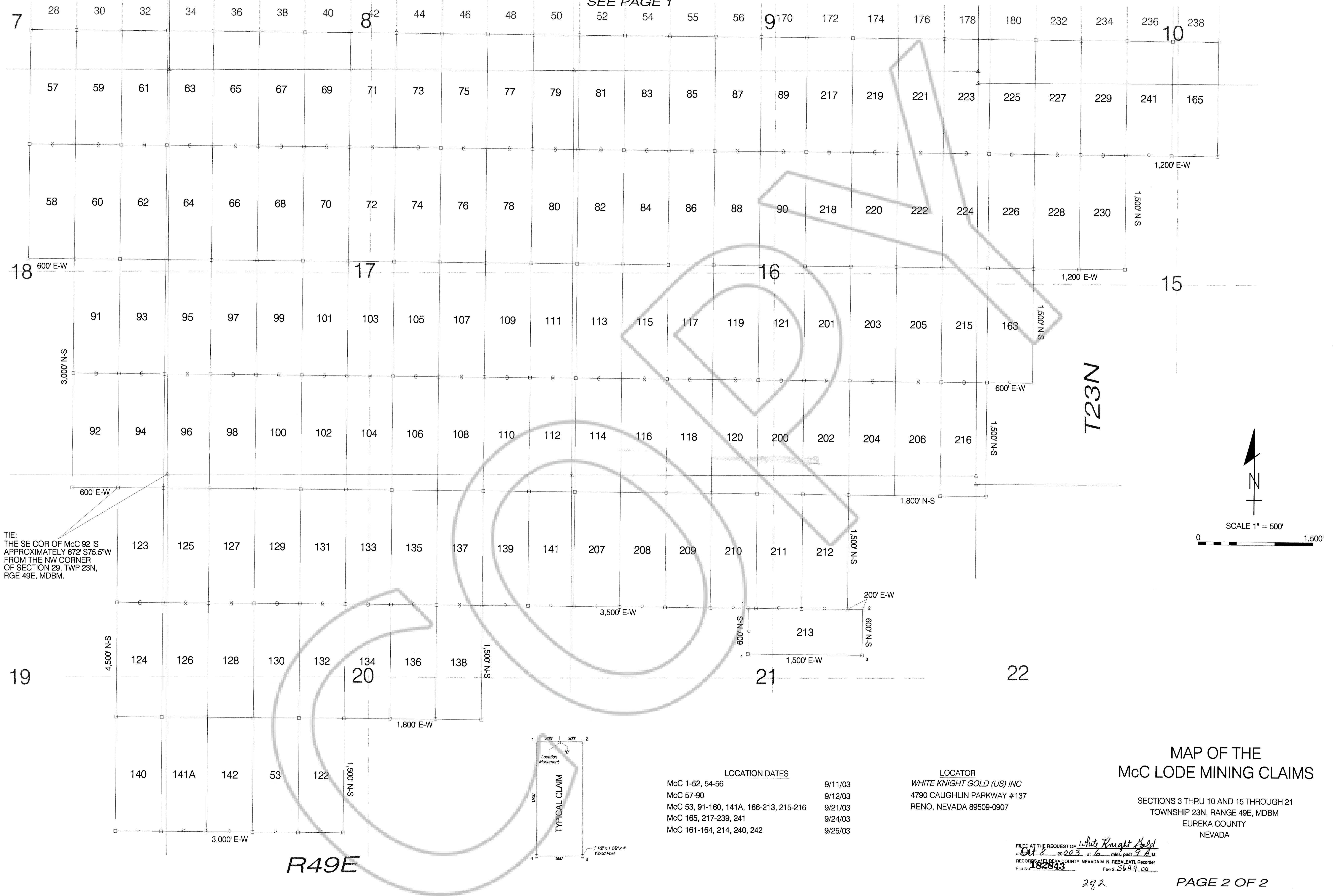
SECTIONS 3 THRU 10 AND 15 THROUGH 21
TOWNSHIP 23N, RANGE 49E, MDBM
EUREKA COUNTY
NEVADA

LOCATION DATES	
McC 1-52, 54-56	9/11/03
McC 57-90	9/12/03
McC 53, 91-160, 141A, 166-213, 215-216	9/21/03
McC 165, 217-239, 241	9/24/03
McC 161-164, 214, 240, 242	9/25/03

LOCATOR
WHITE KNIGHT GOLD (US) INC
4790 CAUGHLIN PARKWAY #137
RENO, NEVADA 89509-0907



FILED AT THE REQUEST OF White Knight Gold
on Oct 8 2003, at 6 mins past 9 A.M.
RECORDS OF EUREKA COUNTY, NEVADA M. N. REBALEATI, Recorder
File No. 182843 Fee \$ 364.00
1 of 2



TIE:
THE SE COR OF McC 92 IS
APPROXIMATELY 672' S75.5°W
FROM THE NW CORNER
OF SECTION 29, TWP 23N,
RGE 49E, MDBM.

SEE PAGE 1

LOCATION DATES	
McC 1-52, 54-56	9/11/03
McC 57-90	9/12/03
McC 53, 91-160, 141A, 166-213, 215-216	9/21/03
McC 165, 217-239, 241	9/24/03
McC 161-164, 214, 240, 242	9/25/03

LOCATOR
WHITE KNIGHT GOLD (US) INC
4790 CAUGHLIN PARKWAY #137
RENO, NEVADA 89509-0907

MAP OF THE
McC LODGE MINING CLAIMS

SECTIONS 3 THRU 10 AND 15 THROUGH 21
TOWNSHIP 23N, RANGE 49E, MDBM
EUREKA COUNTY
NEVADA

FILED AT THE REQUEST OF White Knight Gold
ON 09/28 2003, at 6 min, past 9 A.M.
RECORDS OF EUREKA COUNTY, NEVADA M. N. REBALEATI, Recorder
File No. 182843 Fee \$ 36.49 CG

282