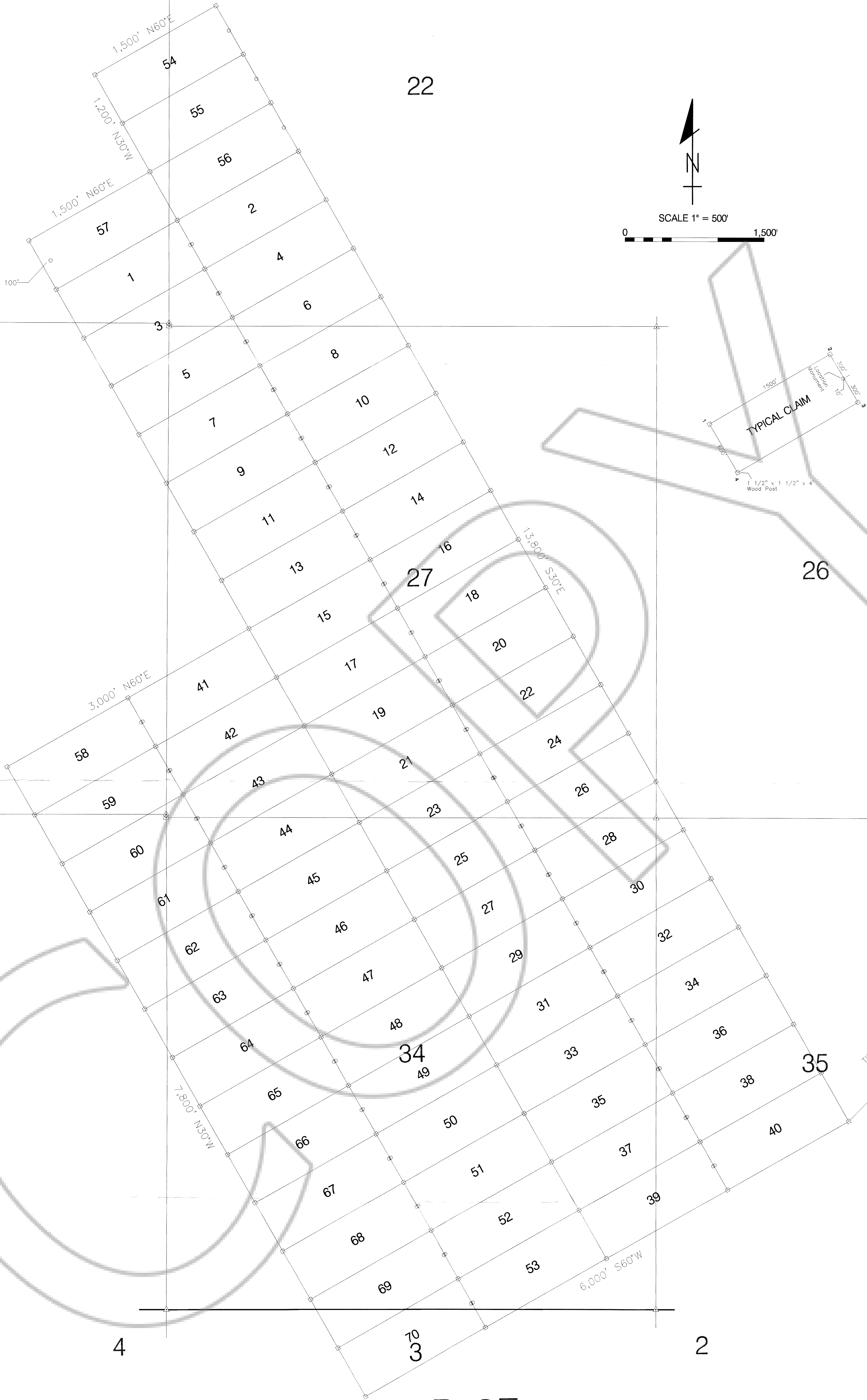


21

22



SCALE 1" = 500'



28

33

4

3

2

R49E

T22N T23N

LOCATION DATES
CELT 1-70 10/9/03

LOCATOR
WHITE KNIGHT GOLD (US) INC
4790 CAUGHLIN PARKWAY #137
RENO, NEVADA 89509-0907

MAP OF THE CELT LODGE MINING CLAIMS

SECTIONS 21-22, 26-28, 33-35, TWP 23N, RGE 49E MDB&M
SECTION 3, TWP 22N, RGE 49E, MBD&M
EUREKA COUNTY
NEVADA

FILED AT THE REQUEST OF *White Knight Gold*
ON *10/21* 20*03*, AT *2:03* P.M.
RECORDS OF EUREKA COUNTY, NEVADA M. N. REBALEATI, Recorder
183003 Fee \$ *1056.00*