

4439000

4438000

4437000

4436000

4435000

35

36

T 26 N

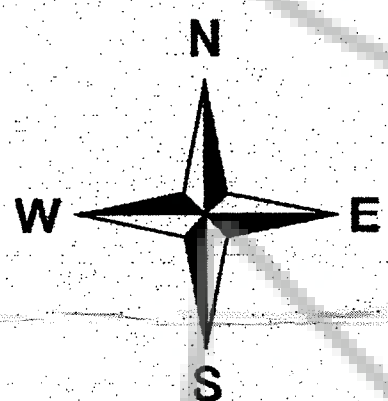
T 25 N

R 50 E

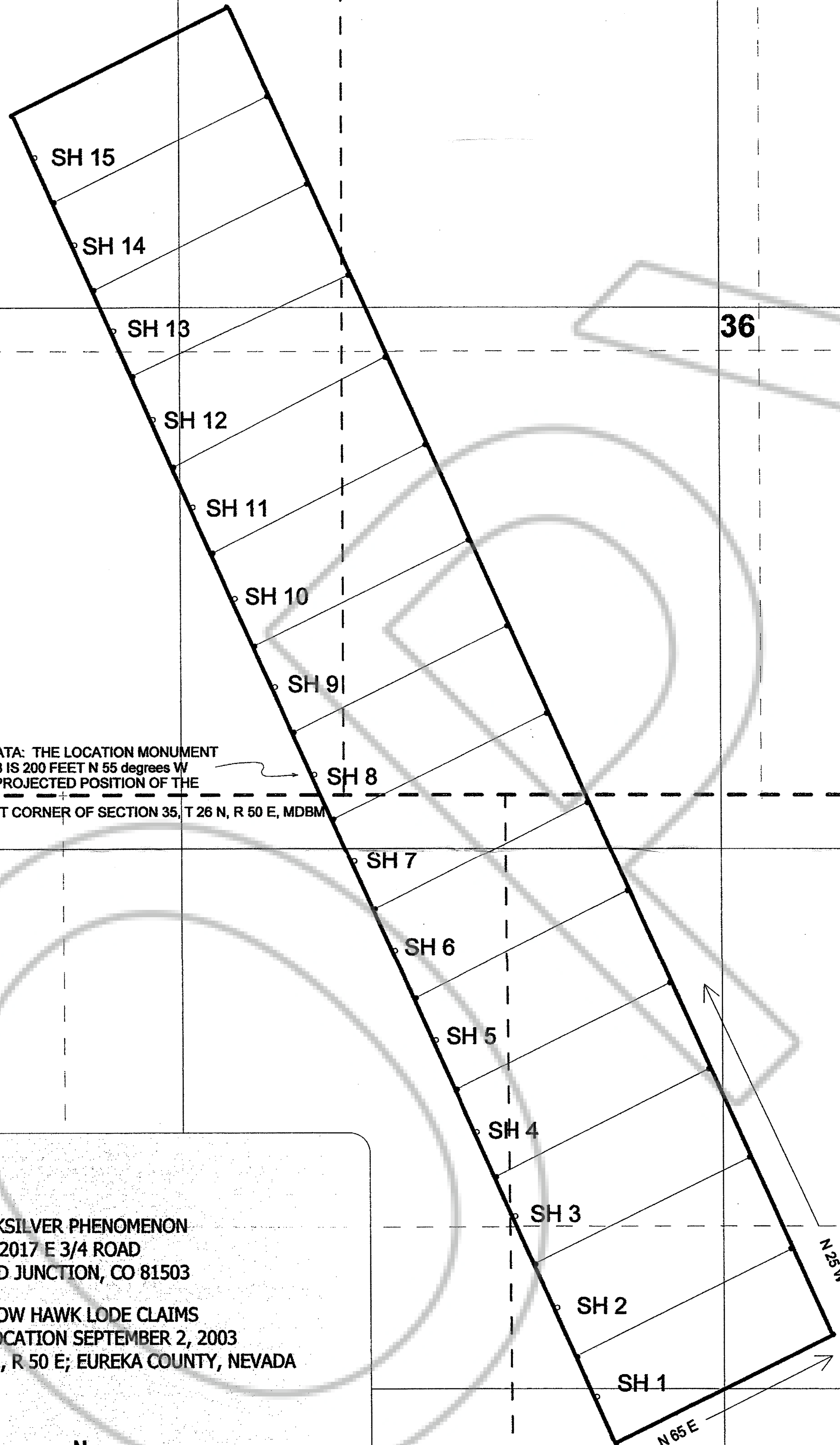
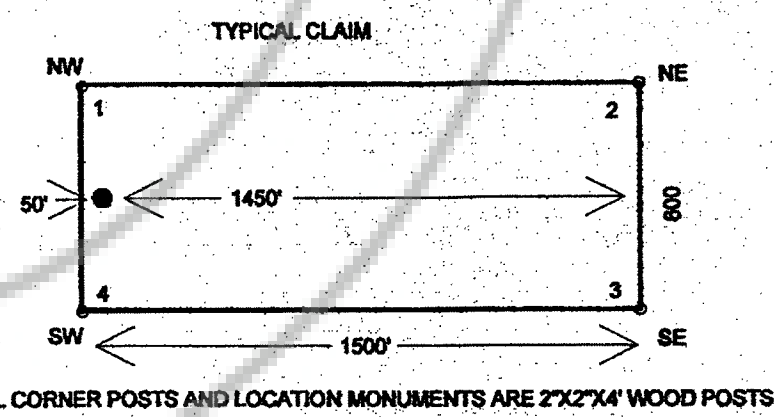
R 51 E

TIE POINT DATA: THE LOCATION MONUMENT OF THE SH 8 IS 200 FEET N 55 degrees W FROM THE PROJECTED POSITION OF THE SOUTHEAST CORNER OF SECTION 35, T 26 N, R 50 E, MDBM

QUICKSILVER PHENOMENON
2017 E 3/4 ROAD
GRAND JUNCTION, CO 81503
SPARROW HAWK LOSE CLAIMS
DATE OF LOCATION SEPTEMBER 2, 2003
T 25 N AND T 26 N, R 50 E; EUREKA COUNTY, NEVADA



SCALE = 1:6,000 1 INCH = 500 FEET



1

12

559000

560000

561000

562000

FILED AT THE REQUEST OF *Quicksilver Phenomenon*
on *Nov 25 2003*, at *42* mins. past *2* P.M.
RECORDS OF EUREKA COUNTY, NEVADA M. N. REBALEATI, Recorder
File No. *183209* Fee \$ *229.00*