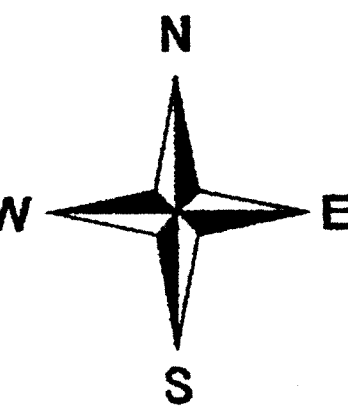
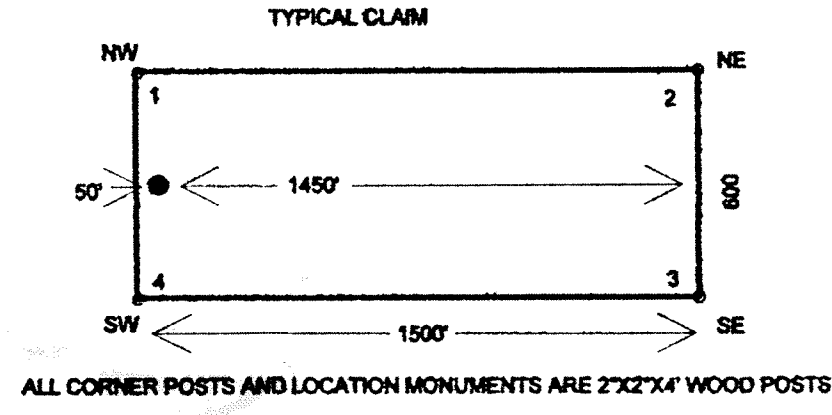


QUICKSILVER PHENOMENON  
 2017 E 3/4 ROAD  
 GRAND JUNCTION, CO 81503  
 POWDER KEG LODGE CLAIMS  
 DATE OF LOCATION SEPTEMBER 1, 2003  
 T 26 N AND T 27 N, R 50 E; EUREKA COUNTY, NEVADA



SCALE = 1:8000 1 INCH = 500 FEET



TIE POINT DATA: THE SOUTHWEST CORNER OF PK 138 IS AT  
 THE NORTHWEST CORNER OF SECTION 4, T 26 N R 50 E, MDBM

Continued on Sheet 2

R 50 E

Continued on Sheet 1

4447000

TIE POINT DATA: THE NORTHEAST CORNER OF PK 1 IS AT THE NORTHEAST CORNER OF SECTION 5, T 26 N, R 50 E, MDBM

PK 137

PK 135

PK 136

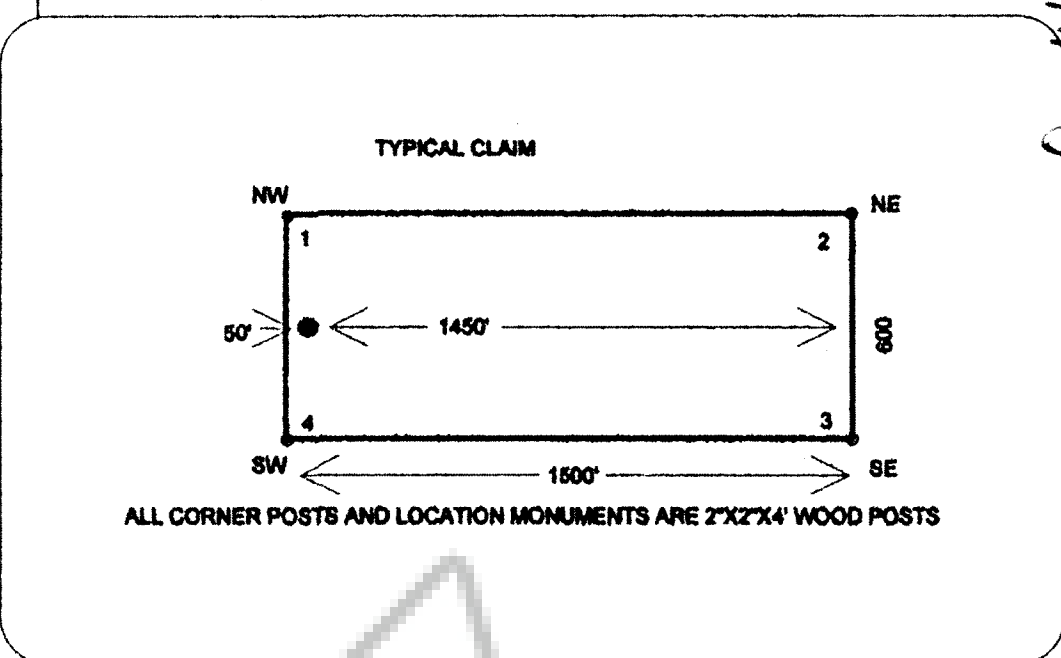
PK 131

PK 138

T 27 N

T 26 N

Quicksilver Phenomenon  
Dec 1, 2003 at 26 min post 10am  
184154 Page 2



4446000

4445000

4444000

4443000

554000

555000

556000

557000

PK 37 •• PK 38

PK 1 •• PK 2

PK 39 •• PK 40

PK 3 •• PK 4

PK 41 •• PK 42

PK 5 •• PK 6

PK 43 •• PK 44

PK 7 •• PK 8

PK 45 •• **5** PK 46

PK 9 •• PK 10

PK 47 •• PK 48

PK 11 •• PK 12

PK 49 •• PK 50

PK 13 •• PK 14

PK 139 •

PK 51 •• PK 52

PK 15 •• PK 16

PK 141 •

PK 53 •• PK 54

PK 17 •• PK 18

PK 143 •

PK 55 •• PK 56

PK 19 •• PK 20

PK 145 •

PK 57 •• PK 58

PK 21 •• PK 22

PK 147 •

PK 59 •• PK 60

PK 23 •• PK 24

PK 149 •

PK 61 •• PK 62

PK 25 •• PK 26

PK 151 •

PK 63 •• **8** PK 64

PK 27 •• PK 28

PK 153 **9** •

PK 65 •• PK 66

PK 29 •• PK 30

PK 155 •

PK 67 •• PK 68

PK 31 •• PK 32

PK 157 •• PK 158

PK 69 •• PK 70

PK 33 •• PK 34

PK 159 •• PK 160

PK 71 •• PK 72

PK 35 •• PK 36

PK 161 •• PK 162

PK 73 •• PK 74

PK 169 •• PK 170

PK 163 •• PK 164

PK 75 •• PK 76

PK 171 •• PK 172

PK 165 •

PK 173 •• PK 174

PK 167 •

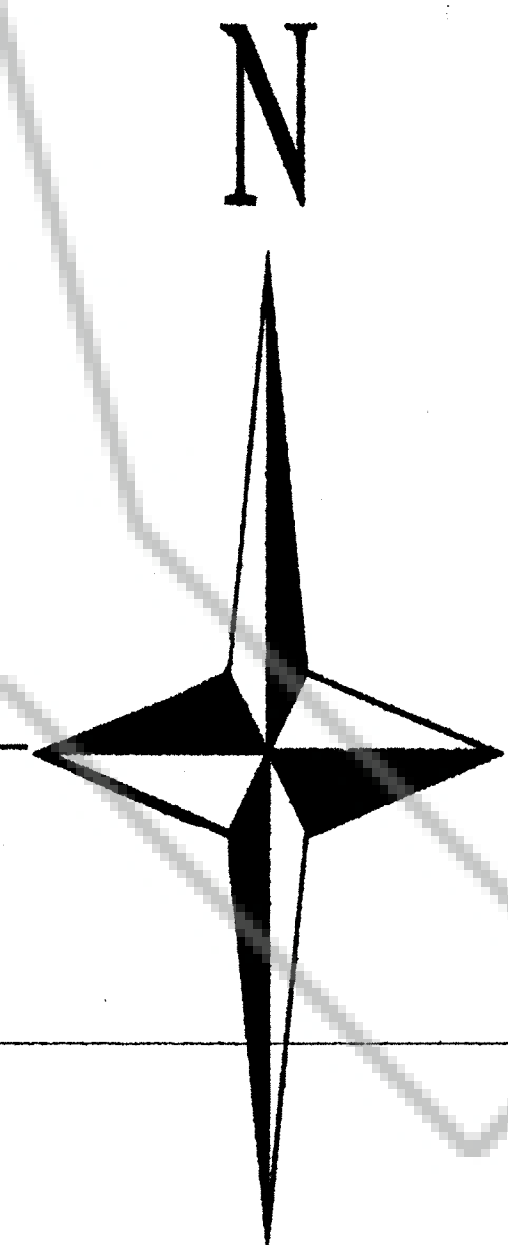
PK 175 •• PK 176

PK 177 •• PK 178

PK 179 •

**17**

**16**



SCALE = 1:6000 1 INCH = 500 FEET

QUICKSILVER PHENOMENON  
2017 E 3/4 ROAD, GRAND JUNCTION, COLORADO 81503

POWDER KEG LODE CLAIMS  
T 26 N, R 50 E; EUREKA COUNTY, NEVADA  
DATES OF LOCATION: PK 1 - PK 36 - SEPTEMBER 16, 2003

PK 37 - PK 76 - SEPTEMBER 17, 2003  
PK 127-PK 131, 133, PK 135-PK 139, PK 141, PK 143, PK 145, PK 147, PK 149, PK 151, PK 153, PK 155, PK 157, PK 158-PK165, PK 167, PK 169-PK 179 - SEPTEMBER 1, 2003

SHEET 2 OF 2

184154 (2/2)