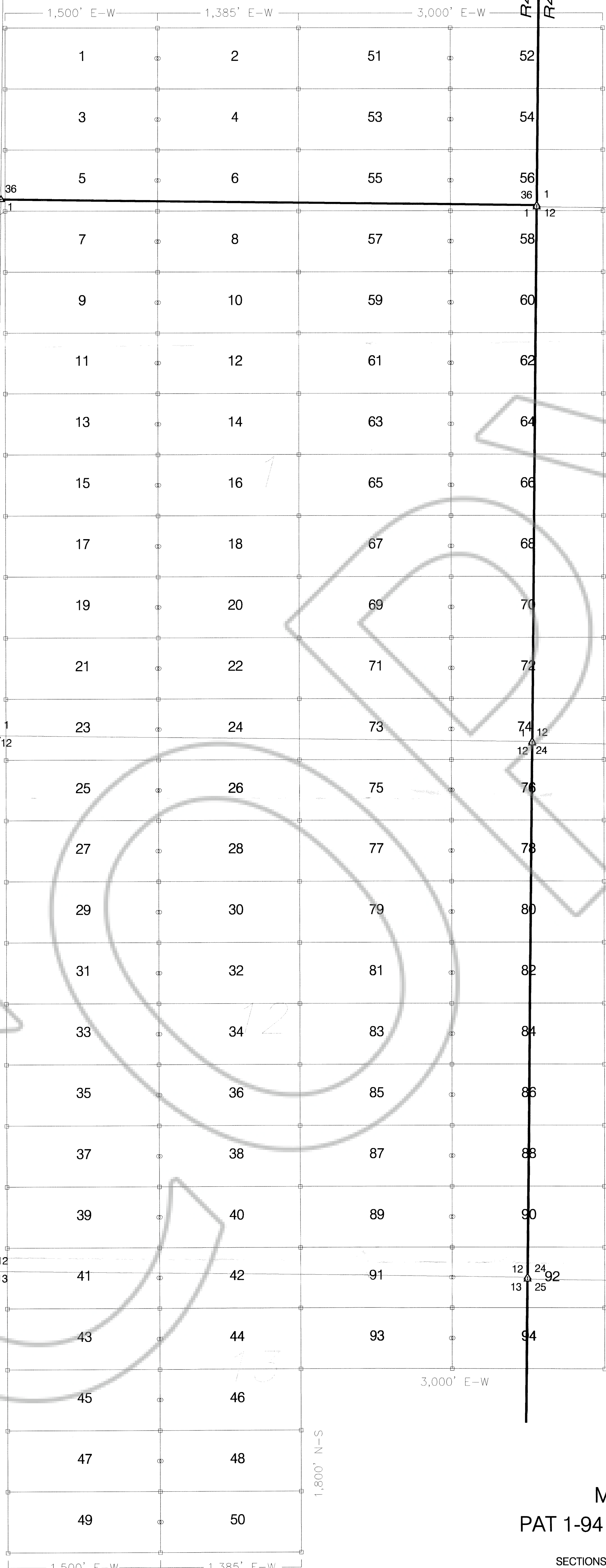


35

36

1

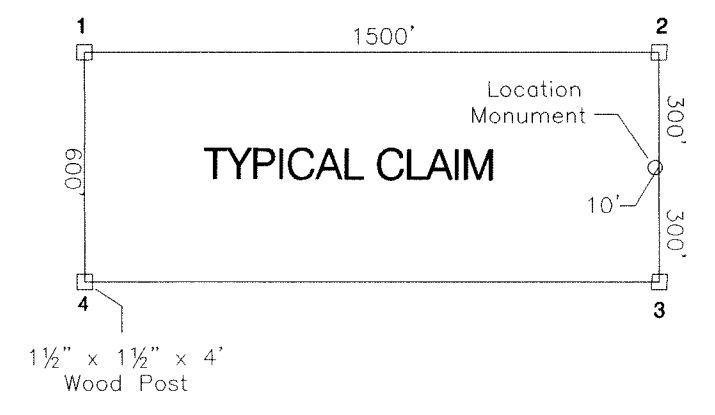
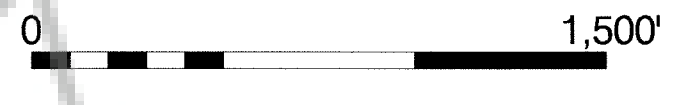


T25N 35 36
T24N 2 1

TIE: The NW Cor of PAT 7 is located 120' S20'E from the NW Cor of Sec 1, Twp 24N, Rge 48E.



SCALE 1" = 500'



MAP OF THE
PAT 1-94 LODGE MINING CLAIMS

SECTIONS 1, 12, 13, TWP 24N, RGE 48E MDB&M
SECTION 36, TWP 25N, RGE 48E MDB&M
SECTIONS 1, 12, 13, 24, TWP 24N, RGE 48 1/2 E MDB&M
EUREKA COUNTY
NEVADA

LOCATION DATES	
PAT 1-30	9/17/03
PAT 31-50	9/20/03
PAT 51-86	9/16/03
PAT 87-94	9/17/03

LOCATOR
WHITE KNIGHT GOLD (US) INC
4790 CAUGHLIN PARKWAY #137
RENO, NEVADA 89509-0907

FILED AT THE REQUEST OF *White Knight Gold*
on Dec 9 2003 at 9:44 mins past 10 M.
RECORDS OF EUREKA COUNTY, NEVADA M. N. REBALEATI, Recorder
File No. **184539** Fee \$ 1414.00