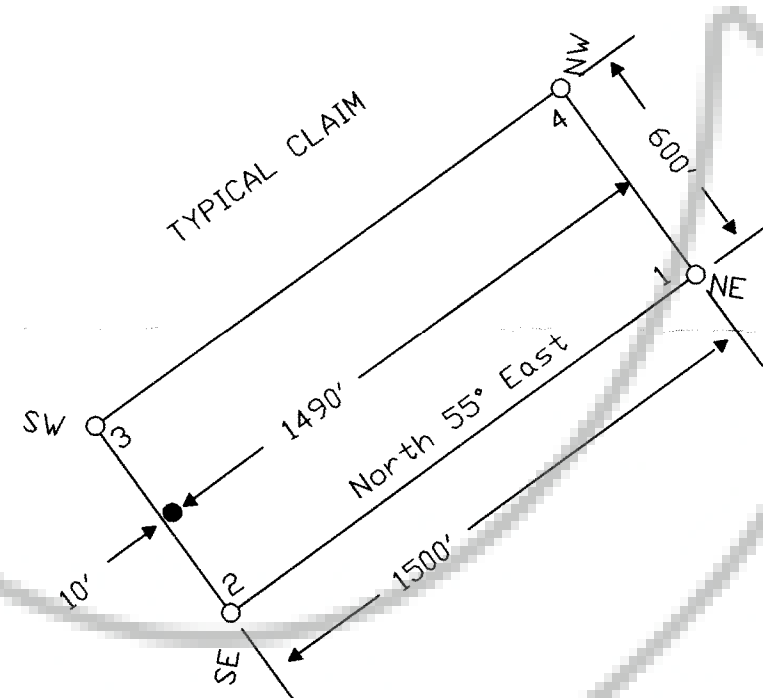


TIE POINT DATA:  
THE SOUTHEAST CORNER OF SW 50 LIES APPROXIMATELY  
1,330 FEET WEST AND 11,705 FEET NORTH OF THE SOUTHWEST  
CORNER OF SECTION 35, T.22N., R.50E., M.D.B.M.




LOCATION DATES:  
10/12/03 - SW 31-50

NOTES:  
LOCATION MONUMENTS SET 10' FROM CLAIM END  
CENTERLINES. ALL LOCATION MONUMENTS AND CLAIM  
POSTS ARE 2"x2"x4' WOODEN STAKES.

DASHED SECTION LINES INDICATE PROJECTED SECTIONS.

FILED AT THE REQUEST OF *Nevada Gold Ventures Ltd.*  
on *Dec 15* 20 *03* at *50* mins past *84* A.M.  
RECORDS OF EUREKA COUNTY, NEVADA M. N. REBALEATI, Recorder  
File No. *184675* Fee \$ *304.00*

	Locator: Nevada Gold Ventures Ltd. PO Box 900, Elko, NV 89803 SW 31-50 Lode Claims T.22N., R.50E.; Eureka County, Nevada	
	DATE: November 2003	ACAD FILE NAME <i>clm184675.dwg</i> PLOT SCALE 1"=500'
DRAWN BY <i>smm</i>		

369 - 5th STREET  
PH: (775) 778-0668 ELKO, NV 89801 FAX: (775) 778-0687