

22

23

	•	640	
	•	641	327
642	••	643	529
644	••	645	584

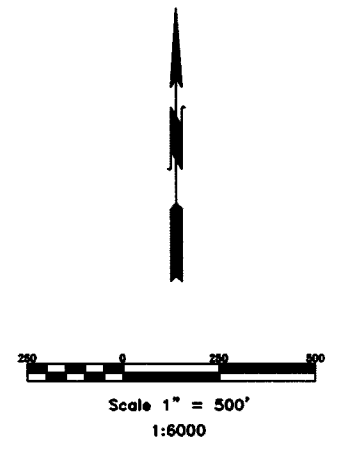
	••	646	647	586
	••	648	649	588
	••	660	661	590
	••	662	663	592
	••	664	665	594
	•	666	596	
	•	667	598	
	•	668	600	
	•	669	602	
	•	670	604	
	•	671	606	
	•	672	608	
	•	673	609	
	•	674	610	

	•	676	611
	•	677	612
	•	678	613
	•	679	614
	•	680	615.
	•	681	616
	•	682	617

T.27N.

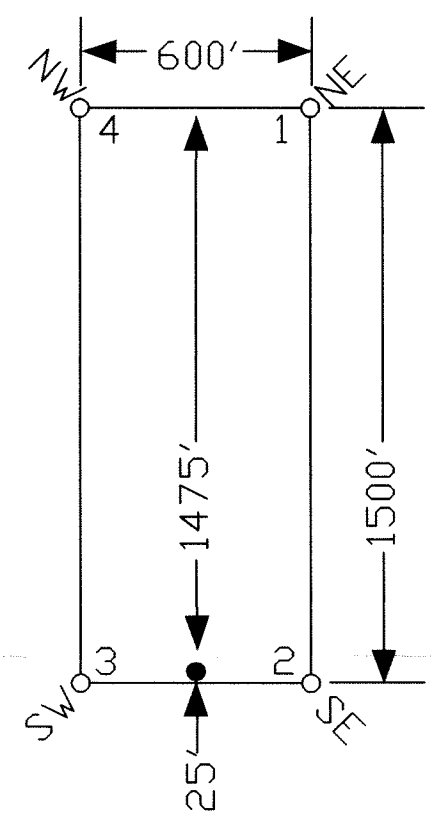
T.26N.

2



EXISTING PHOENIX CLAIMS

TYPICAL CLAIM



LOCATION DATES:

- 10/01/03 - Phoenix 646-649,660-663
- 10/02/03 - Phoenix 640-645,668-674
- 10/03/03 - Phoenix 664-667,676-682

NOTES:

LOCATION MONUMENTS SET 25' FROM CLAIM END CENTERLINES. ALL LOCATION MONUMENTS AND CLAIM POSTS ARE 2"x2"x4' WOODEN STAKES.

DASHED SECTION LINES INDICATE PROJECTED SECTIONS.

TIE POINT DATA:  
THE SOUTHWEST CORNER OF PHOENIX 682 LIES APPROXIMATELY 2,169 FEET EAST AND 6,498 FEET SOUTH OF THE NORTHWEST CORNER OF SECTION 35, T.27N., R.52E., M.D.B.M.

FILED AT THE REQUEST OF *Golden Gryphon*  
 on *Nov 24* 20 *03*, at *4:22* mins past *9* A.M.  
 RECORDS OF EUREKA COUNTY, NEVADA M. N. REBALEATI, Recorder  
 File No. **184730** Fee \$ *494.00*

	Locator: Golden Gryphon USA Inc. 1400 Tanager Place RR21, Roberts Creek, BC V0N 2W1 Phoenix Lode Claims T.26,27N., R.52E.; Eureka County, Nevada	
	DATE: October 2003 PLOT SCALE: 1"=500'	DRAWN BY: <i>gms</i>

369 - 5th STREET  
 ELKO, NV 89801 PH: (775) 778-0668 FAX: (775) 778-0687