

DRAWING NUMBER

SAFECO PRODUCTS • NEW HOPE, MINNESOTA
REFLECTS BY PART NUMBER 8550

DRAWING NUMBER

SAFECO PRODUCTS • NEW HOPE, MINNESOTA
REFLECTS BY PART NUMBER 8550

DRAWING NUMBER

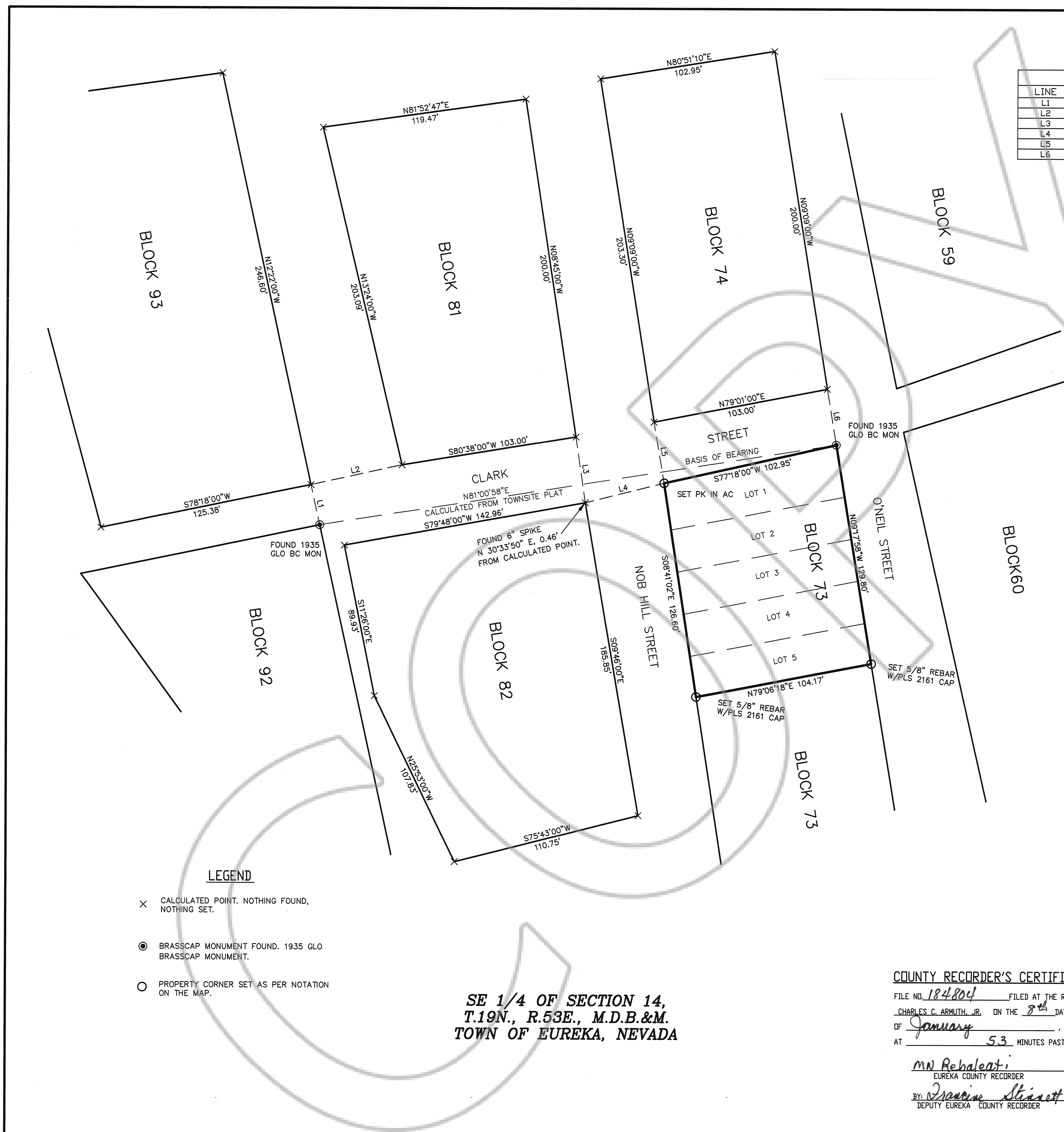
SAFECO PRODUCTS • NEW HOPE, MINNESOTA
REFLECTS BY PART NUMBER 8550

DRAWING NUMBER

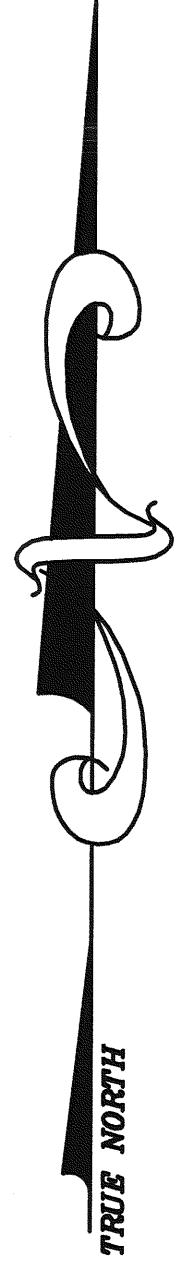
SAFECO PRODUCTS • NEW HOPE, MINNESOTA
REFLECTS BY PART NUMBER 8550

DRAWING NUMBER

SAFECO PRODUCTS • NEW HOPE, MINNESOTA
REFLECTS BY PART NUMBER 8550



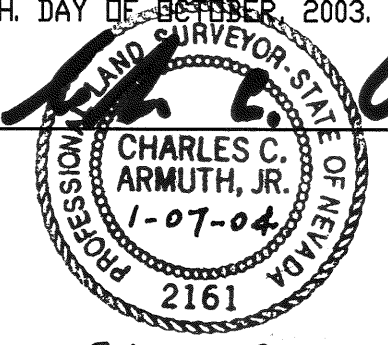
| LINE TABLE | | |
|------------|--------|-------------|
| LINE | LENGTH | BEARING |
| L1 | 24.15 | S12°22'00"E |
| L2 | 54.42 | S77°36'00"W |
| L3 | 38.97 | N08°14'00"W |
| L4 | 47.57 | N75°53'00"E |
| L5 | 36.41 | N09°36'00"W |
| L6 | 33.33 | N09°18'24"W |



LAND SURVEYOR'S CERTIFICATE

I, CHARLES C. ARMUTH, JR., A PROFESSIONAL LAND SURVEYOR LICENSED IN THE STATE OF NEVADA, DO HEREBY CERTIFY THAT THIS PLAT IS A TRUE AND ACCURATE MAP OF THE LAND SURVEYED UNDER MY SUPERVISION AND DIRECTION ON THE 10th. DAY OF OCTOBER, 2003, AND THAT SAID SURVEY IS FULLY AND CORRECTLY DESIGNATED THEREON. SURVEY MADE AT THE INSTANCE OF CONNIE HICKS. SURVEY COMPLETED ON THE 10TH. DAY OF OCTOBER, 2003.

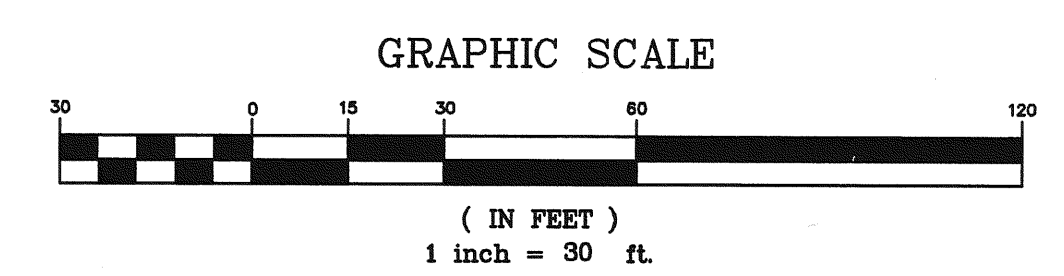
CHARLES C. ARMUTH, JR., P.E., P.L.S.
NEVADA REGISTRATION No. 2161
421 RAILROAD STREET
ELKO, NEVADA 89801
PH. (702) 738-7369
FAX (702) 738-7368



EXP. 12-31-04

NOTES

ALL INFORMATION REGARDING LOTS, BLOCKS AND DISTANCES AND BEARINGS ARE FROM THE PLAT OF THE TOWNSITE OF EUREKA, NEVADA AS PREPARED BY THE GENERAL LAND OFFICE IN WASHINGTON, D.C. ON NOVEMBER 19, 1937, AND AMENDED ON SEPTEMBER 1, 1999 BY ERNEST E. MULLER, P.L.S. 827 FOR THE EUREKA COUNTY BOARD OF COMMISSIONERS.



- LEGEND**
- × CALCULATED POINT. NOTHING FOUND, NOTHING SET.
 - BRASSCAP MONUMENT FOUND. 1935 GLO BRASSCAP MONUMENT.
 - PROPERTY CORNER SET AS PER NOTATION ON THE MAP.

**SE 1/4 OF SECTION 14,
T.19N., R.53E., M.D.B.&M.
TOWN OF EUREKA, NEVADA**

COUNTY RECORDER'S CERTIFICATE

FILE NO. 184804 FILED AT THE REQUEST OF
CHARLES C. ARMUTH, JR. ON THE 7th DAY
OF January, 2004,
AT 5.3 MINUTES PAST 3 O'CLOCK P.M. 21⁰⁰

MN Rebaleati
EUREKA COUNTY RECORDER

BY: Tracey Stinson
DEPUTY EUREKA COUNTY RECORDER

RECORD OF SURVEY
FOR
CONNIE HICKS
OF
LOTS 1-5, BLOCK 73
TOWN OF EUREKA, NEVADA
SECTION 14, T.19N., R.53E., M.D.B.&M.

SURVEYED BY CHARLES C. ARMUTH, JR., P.E., P.L.S.
421 RAILROAD STREET
ELKO, NEVADA 89801
PHONE: 775-738-7369 FAX: 775-738-7368
E-MAIL: armuthml@ctns.com