

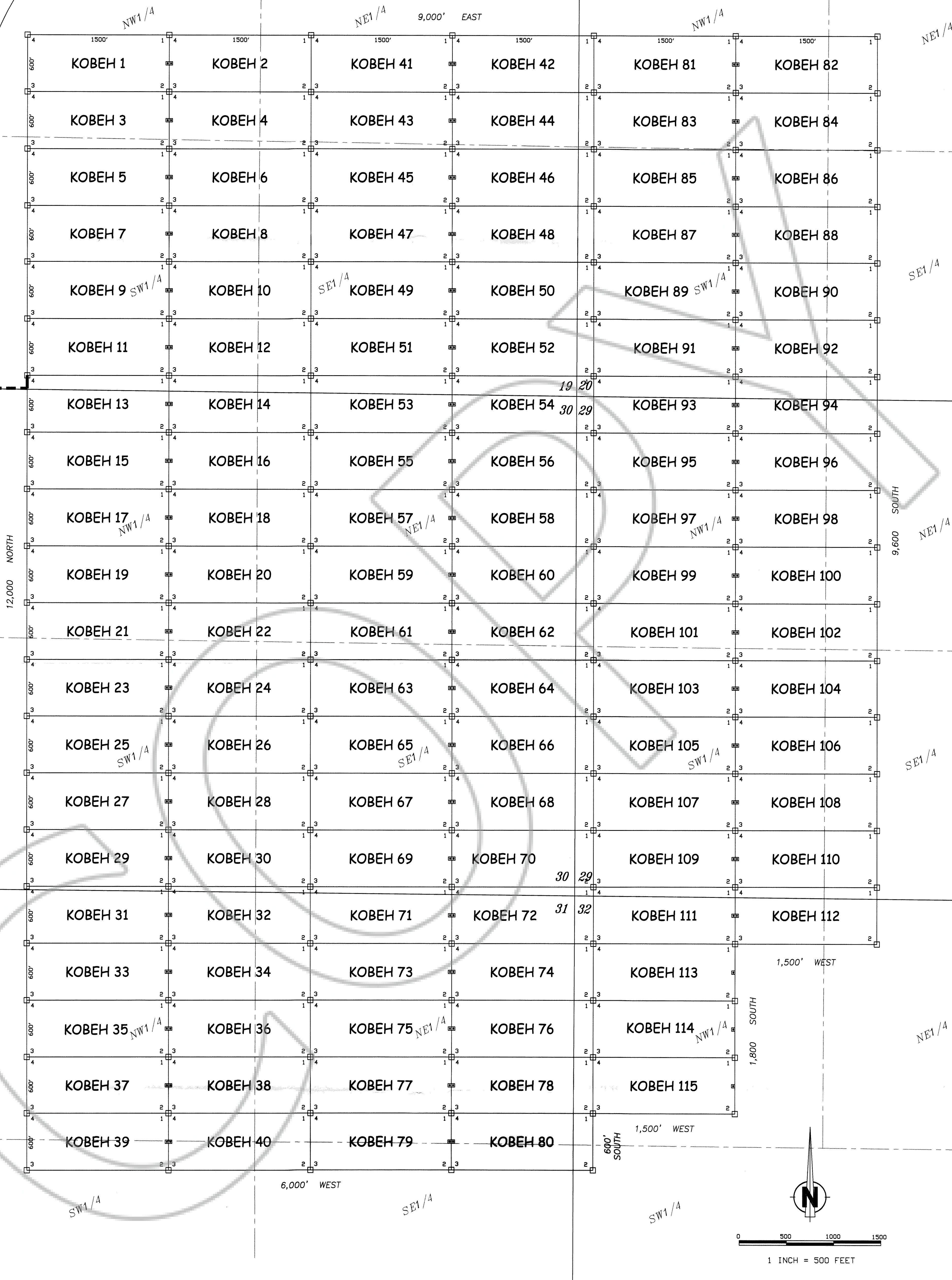
# T21N, R52E, MDM.

24 19

19 20

R51E  
R52E

**TIE POINT:**  
The SW corner of KOBEH 11 is located 137 feet south and 943 feet east of the found SW corner of section 19 T21N, R52E, M.D.M.



24 19

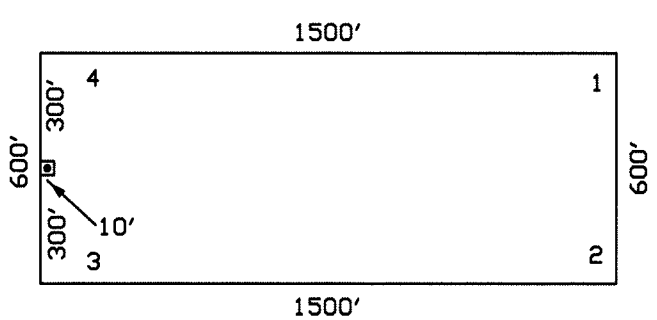
25 30

25 30

36 31

12,000 NORTH

9,600 SOUTH



TYPICAL LODGE CLAIM  
UNLESS OTHERWISE SHOWN

LOCATION MONUMENT MAY LIE AT EITHER END OF THE CLAIM

**LEGEND:**

- = 2" x 2" x 4' WOOD POST CLAIM CORNER
- = 2" x 2" x 4' WOOD POST LOCATION MONUMENT
- ◇ = FOUND SURVEY MONUMENT

**NOTES:**

ALL LOCATION MONUMENTS AND CLAIM CORNERS ARE 2" x 2" x 4' WOOD.

ALL CLAIMS ARE 1500' LONG BY 600' WIDE UNLESS OTHERWISE SHOWN.

LOCATION MONUMENTS ARE SET ON THE CENTERLINE OF EACH CLAIM.

10 FEET FROM THE NEAR ENDLINE AND 1490 FEET FROM THE OPPOSITE ENDLINE, UNLESS OTHERWISE SHOWN.

**OWNER**

NEWMONT USA LIMITED d/b/a  
NEWMONT MINING CORPORATION  
P.O. BOX 669  
CARLIN, NEVADA 89822

FILED AT THE REQUEST OF *Newmont USA Ltd*  
of *January 14 20 04*, at *10 mins past 10 AM*  
RECORDS OF EUREKA COUNTY, NEVADA M. N. REBALEATI, Recorder  
File No. *184929* Fee \$ *1729.00*

Claim Map of

## KOBEH 1-115

Lode Claims located within  
Sections 19, 20, 29 and 30-32,  
T21N, R52E, MDM  
Eureka County, Nevada

**NEWMONT MINING CORPORATION**