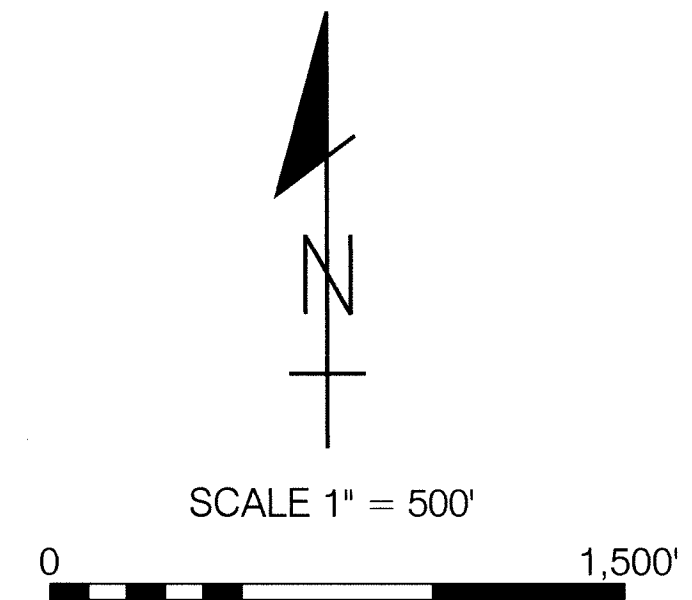
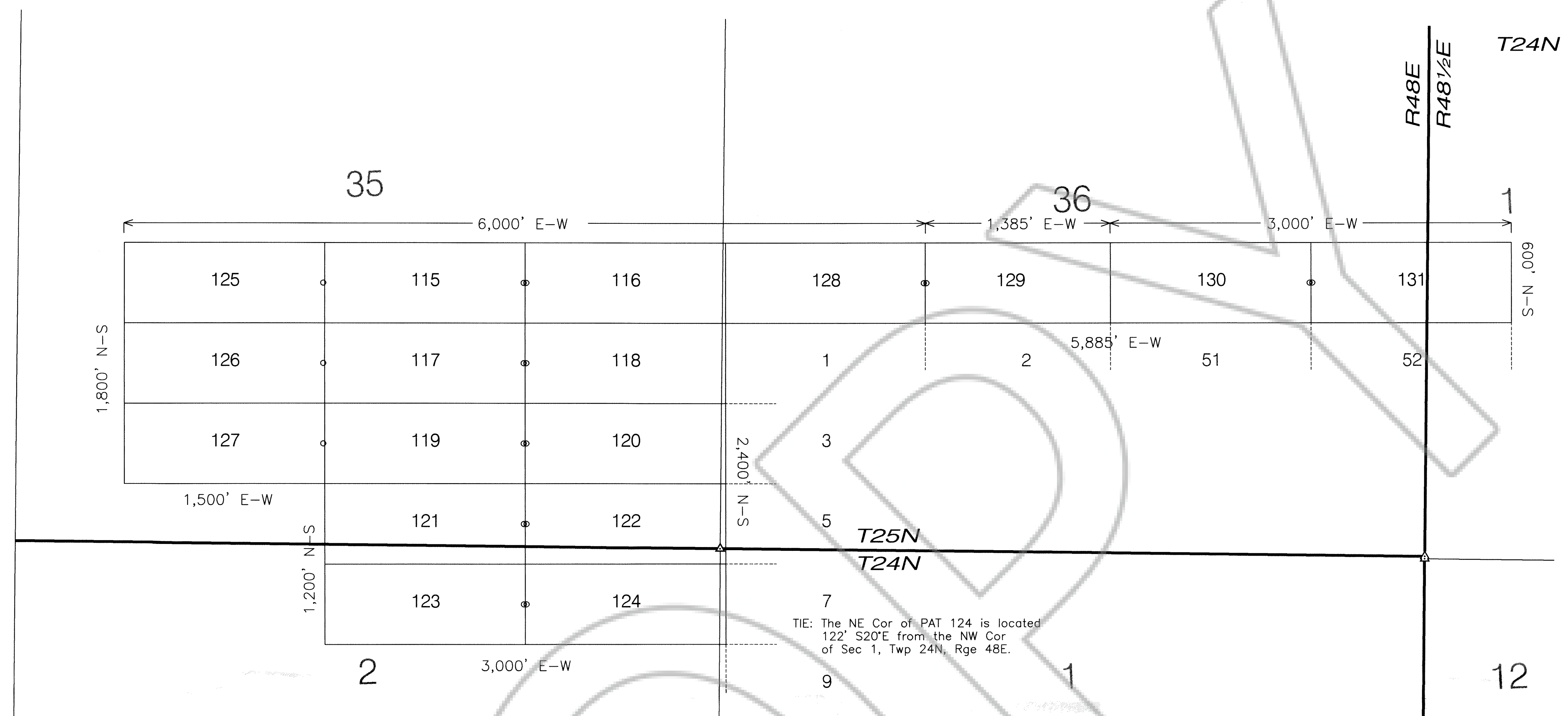
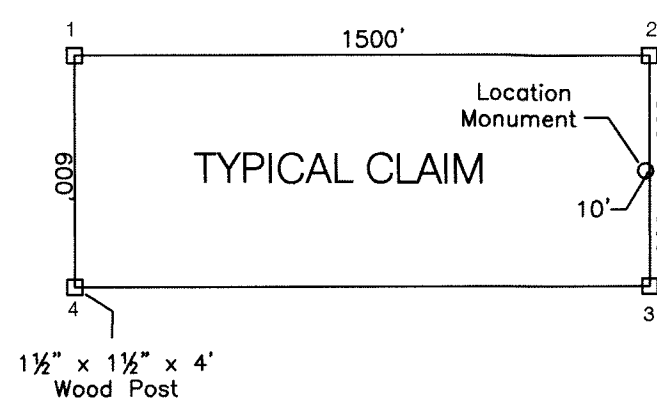


185157



TIE: The NE Cor of PAT 124 is located
 122' S20'E from the NW Cor
 of Sec 1, Twp 24N, Rge 48E.

LOCATION DATES
 PAT 115-131 11/6/03

LOCATOR
 WHITE KNIGHT GOLD (US) INC
 4790 CAUGHLIN PARKWAY #137
 RENO, NEVADA 89509-0907

FILER AT THE REQUEST OF White Knight Gold
 on Jan 30, 2004 at 49 mins past 4:2 M.
 RECORDS of EUREKA COUNTY, NEVADA M. H. REBELETTI, Recorder
 File No. _____ Fee \$ 259.00

185157

MAP OF THE
 PAT 115-131 LODE MINING CLAIMS

SECTIONS 1, 2 TWP 24N, RGE 48E MDB&M
 SECTION 35, 36 TWP 25N, RGE 48E MDB&M
 SECTION 1 TWP 24N, RGE 48 1/2 E MDB&M
 EUREKA COUNTY
 NEVADA