

TIE POINT DATA:
THE NORTHEAST CORNER OF FILL 50 LIES APPROXIMATELY
2,833 FEET EAST AND 1239 FEET NORTH OF THE SOUTHWEST
CORNER OF SECTION 12, T.25N., R.48E., M.D.B.M.

T.25N. R.48E.
T.25N. R.48 1/2E.

Fill 50	••	Fill 51	•	Fill 54
Fill 52	••	Fill 53	•	Fill 55

FyeW 114	••	FyeW 115					
FyeW 116 ⁹ 16	10 15	FyeW 117			10 11 15 14		
FyeW 118	••	FyeW 119					
FyeW 120	•	FyeW 112	••	FyeW 113	FyeW 30	••	FyeW 31
		FyeW 110	••	FyeW 111	FyeW 32	••	FyeW 33
		FyeW 108	••	FyeW 109	FyeW 34	••	FyeW 35
		FyeW 106	••	FyeW 107	FyeW 36	••	FyeW 37
		FyeW 104	••	FyeW 105	FyeW 38	••	FyeW 39
		FyeW 102	••	FyeW 103	FyeW 40	••	FyeW 41
		FyeW 100	••	FyeW 101	FyeW 42	••	FyeW 43
16 15 22		FyeW 98	••	FyeW 99	FyeW 44	••	15 14 22 23 FyeW 45
			•	FyeW 97	FyeW 46	••	FyeW 47
			•	FyeW 96	FyeW 48	••	FyeW 49
			•	FyeW 95	FyeW 50	••	FyeW 51

FyeW Lode Claims Witness Post Locations
Witness posts were used to avoid staking in an established road. Posts are properly marked to designate its right place (NRS 517.030).
A witness post for the following corner is located at the following distance from it's true position:

Corner Post	Approximate Distance in Feet	
	East/West	North/South
SW FyeW 48 Corner 3	0 West	20 South

TIE POINT DATA:
THE NORTHEAST CORNER OF FYEW 45 LIES APPROXIMATELY
987 FEET EAST AND 206 FEET NORTH OF THE SOUTHWEST
CORNER OF SECTION 14, T.25N., R.48E., M.D.B.M.

LOCATION DATES:
11/25/03 - Fill 50-55

LOCATION DATES:
11/21/03 - FyeW 30 - 49
11/22/03 - FyeW 50 - 89
11/23/03 - FyeW 90
11/24/03 - FyeW 91 - 126

(103 Total Claims)

NOTES:
LOCATION MONUMENTS SET 10' FROM CLAIM END CENTERLINES. ALL LOCATION MONUMENTS AND CLAIM POSTS ARE 2"x2"x4' WOODEN STAKES.

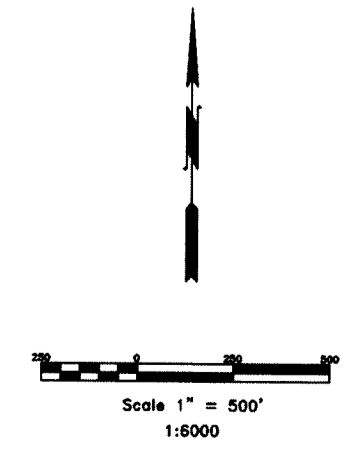
DASHED SECTION LINES INDICATE PROJECTED SECTIONS.

94
CONTINUED ON SHEET 2
93

52
54

53
55

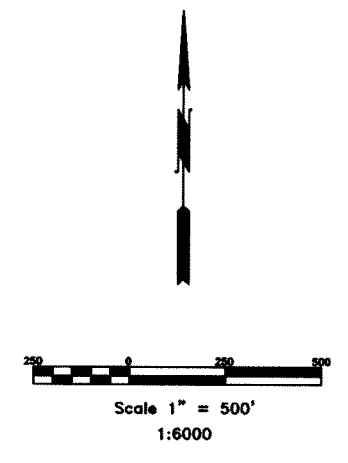
FILED AT THE REQUEST OF White Knight Gold
on Feb 4 2004 at 39 mins past 1 P.M.
RECORDS OF EUREKA COUNTY, NEVADA M. N. REBALEATI, Recorder
File No. 185295 Fee \$ 1,549.00



	Locator: White Knight Gold (US), Inc. 4790 Caughlin Pkwy #137, Reno, NV 89509-0907 FyeW 30-126 and Fill 50-55 Lode Claims T.25N., R.48,48 1/2E.; Eureka County, NV
	DATE: December 2003 ACAD FILE NAME: client\whiteknight\FyeW11.dwg DRAWN BY: smms PLOT SCALE: 1"=500' SHEET 1 OF 2

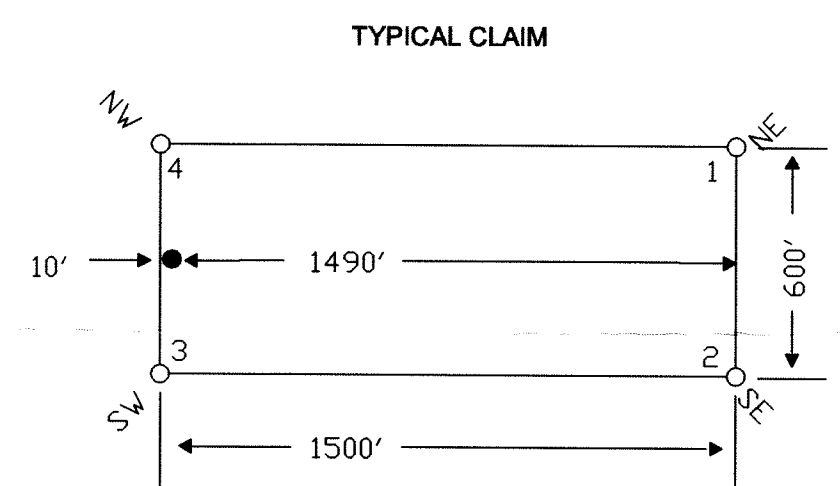
102

96 48 49
 CONTINUED ON SHEET 1
 95 50 51



• FyeW 94	FyeW 52	•• FyeW 53
• FyeW 93	FyeW 54	•• FyeW 55
• FyeW 92	FyeW 56	•• FyeW 57
• FyeW 91	FyeW 58	•• FyeW 59
• FyeW 90	FyeW 60	•• FyeW 61
	FyeW 62	•• ^{22 23} 27 26 FyeW 63
	FyeW 64	•• FyeW 65
	FyeW 66	•• FyeW 67
	FyeW 68	•• FyeW 69
	FyeW 70	•• FyeW 71
	FyeW 72	•• FyeW 73
	FyeW 74	•• FyeW 75
	FyeW 76	•• FyeW 77
	FyeW 78	•• FyeW 79 ^{27 26}
	FyeW 80	•• FyeW 81 ^{34 35}
	FyeW 82	•• FyeW 83
	FyeW 84	•• FyeW 85
	FyeW 86	•• FyeW 87
	FyeW 88	•• FyeW 89

TIE POINT DATA:
 THE SOUTHEAST CORNER OF FYE W 65 LIES APPROXIMATELY
 958 FEET EAST AND 4,198 FEET NORTH OF THE SOUTHWEST
 CORNER OF SECTION 26, T.25N., R.48E., M.D.B.M.



LOCATION DATES:
 11/25/03 - Fill 50-55

LOCATION DATES:
 11/21/03 - FyeW 30 - 49
 11/22/03 - FyeW 50 - 89
 11/23/03 - FyeW 90
 11/24/03 - FyeW 91 - 126

(103 Total Claims)

22
27

27
34

34

34 35

NOTES:
 LOCATION MONUMENTS SET 10' FROM CLAIM END
 CENTERLINES. ALL LOCATION MONUMENTS AND CLAIM
 POSTS ARE 2"x2"x4' WOODEN STAKES.
 DASHED SECTION LINES INDICATE PROJECTED SECTIONS.

FILED AT THE REQUEST OF White Knight Gold
 on Feb 4 2004, at 39 miles past 1 P.M.
 RECORDS OF EUREKA COUNTY, NEVADA M. N. REBALEATI, Recorder
 File No. 185295 Fee \$ 549.00

2 of 2

369 - 5th STREET
 PH: (775) 778-0668 ELKO, NV 89801 FAX: (775) 778-0687

Locator:
 White Knight Gold (US), Inc.
 4790 Caughlin Pkwy #137, Reno, NV 89509-0907
 FyeW 30-126 and Fill 50-55 Lode Claims
 T.25N., R.48,48 1/2E.; Eureka County, NV

DATE: December 2003
 ACAD FILE NAME: Client\whiteknight\FyeW11.dwg
 PLOT SCALE: 1"=500'
 DRAWN BY: srms
 SHEET 2 OF 2