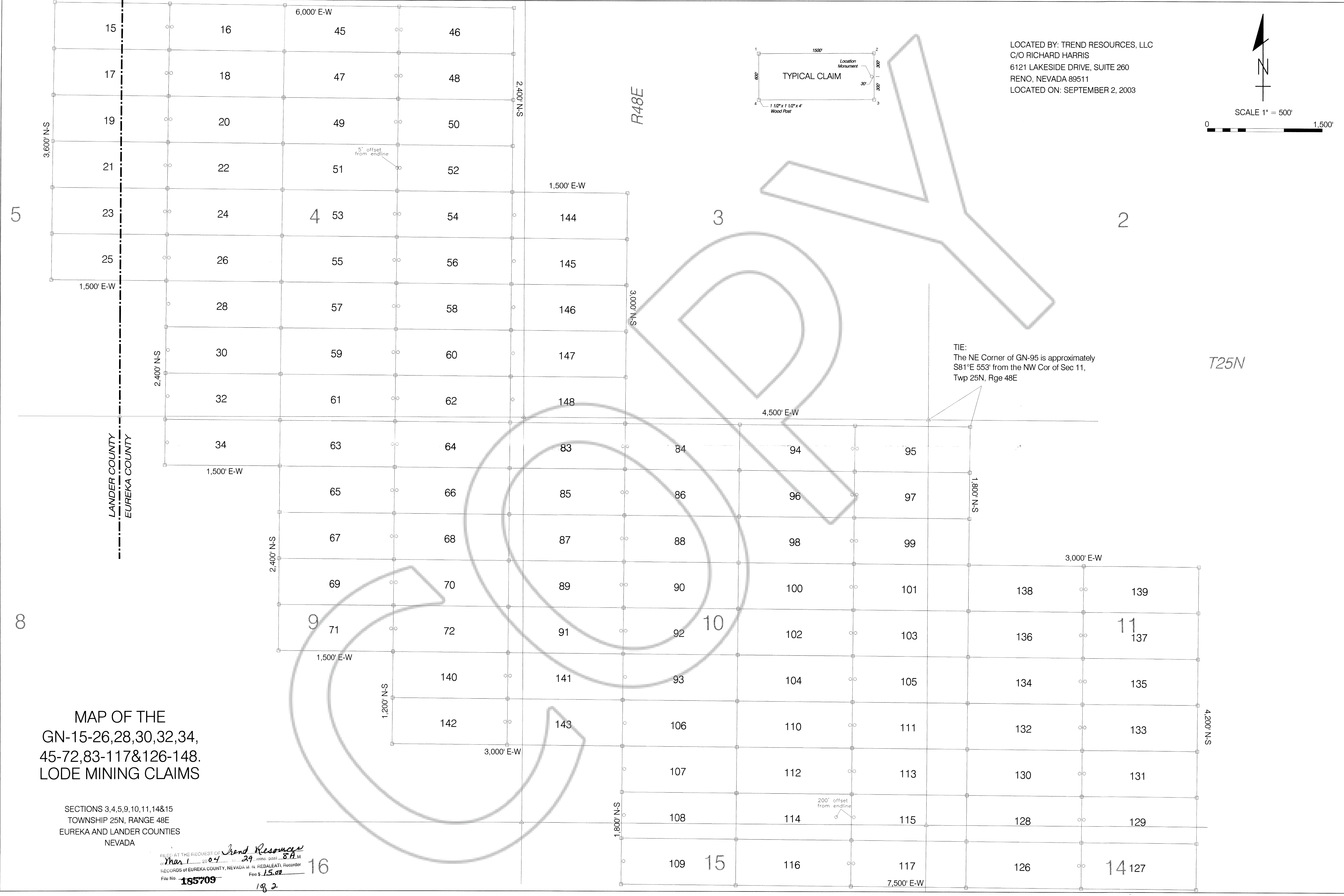
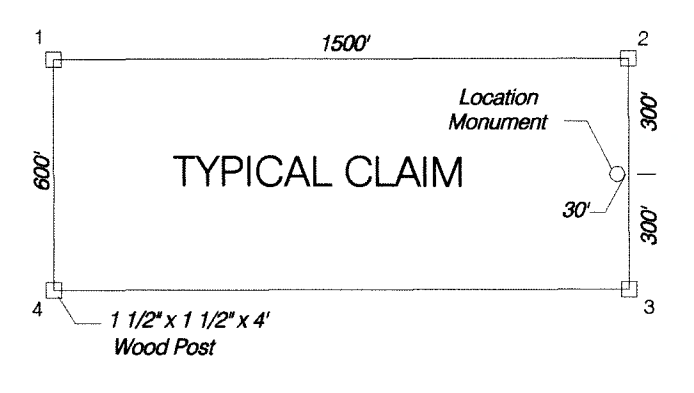
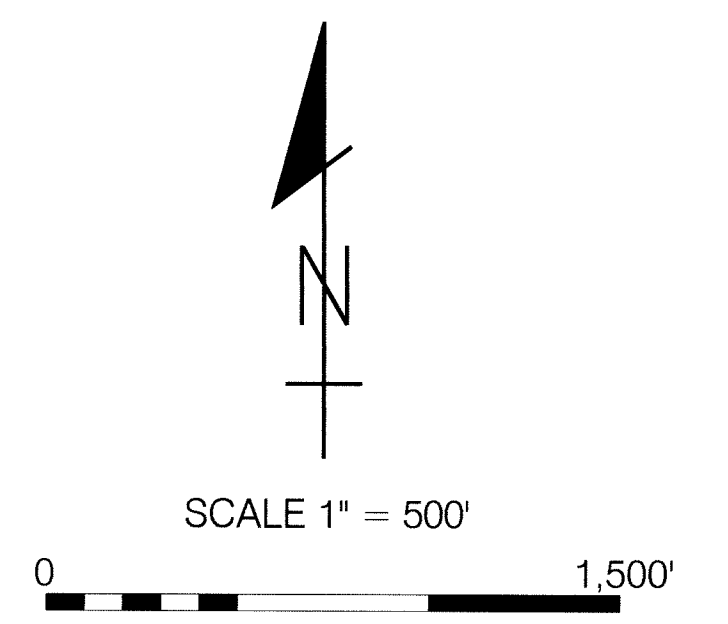


LOCATED BY: TREND RESOURCES, LLC
 C/O RICHARD HARRIS
 6121 LAKESIDE DRIVE, SUITE 260
 RENO, NEVADA 89511
 LOCATED ON: SEPTEMBER 2, 2003

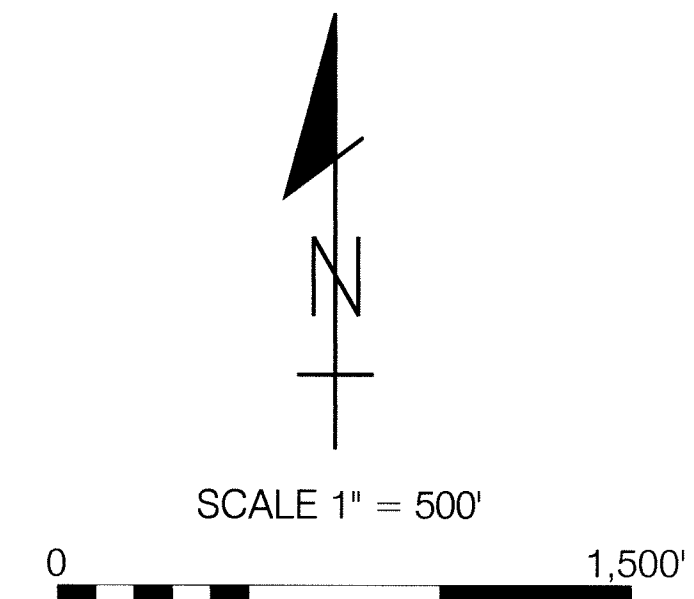


TIE:
 The NE Corner of GN-95 is approximately
 S81°E 553' from the NW Cor of Sec 11,
 Twp 25N, Rge 48E

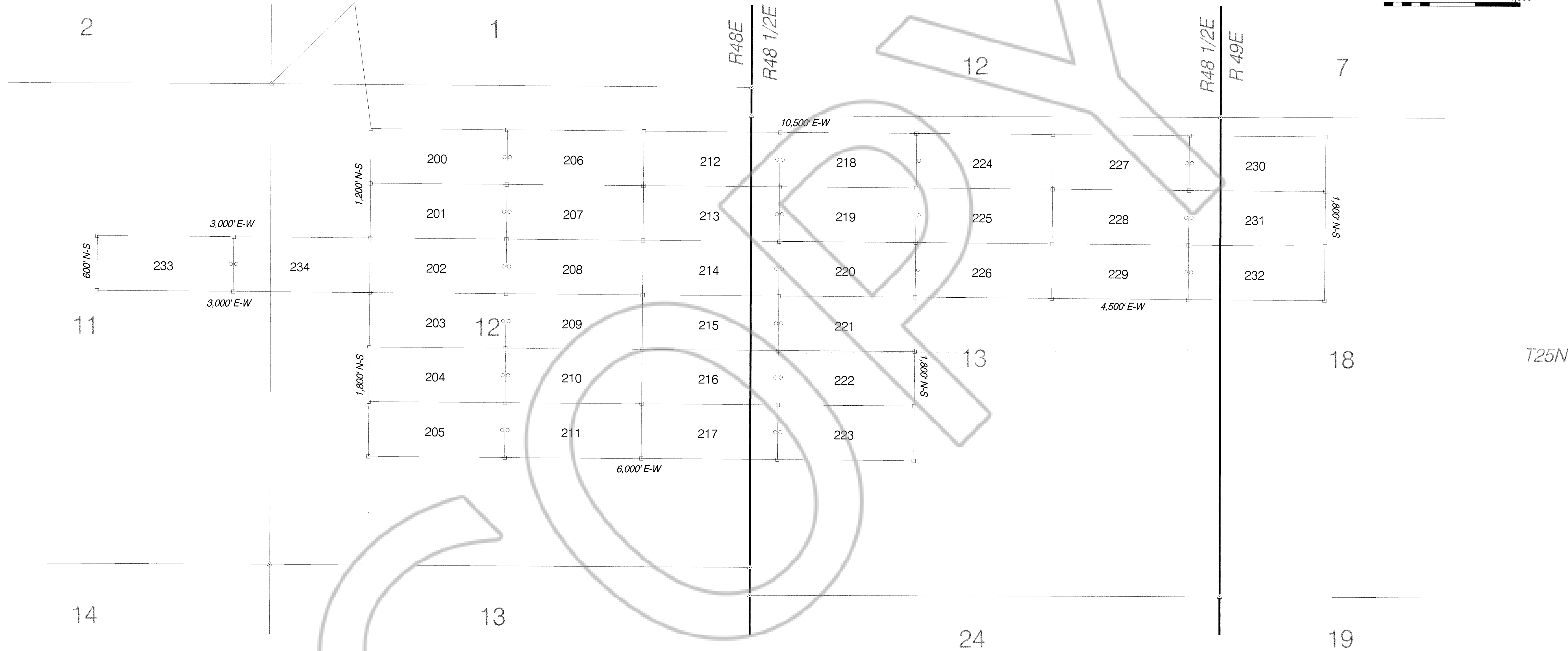
**MAP OF THE
 GN-15-26,28,30,32,34,
 45-72,83-117&126-148.
 LODGE MINING CLAIMS**

SECTIONS 3,4,5,9,10,11,14&15
 TOWNSHIP 25N, RANGE 48E
 EUREKA AND LANDER COUNTIES
 NEVADA

FILED AT THE REQUEST OF *Trend Resources*
 Mar 1 2004 29 mins Dist. 84 M
 RECORDS OF EUREKA COUNTY, NEVADA R. REBALEATI, Recorder
 Fee \$ 15.00
 File No. 185709
 192

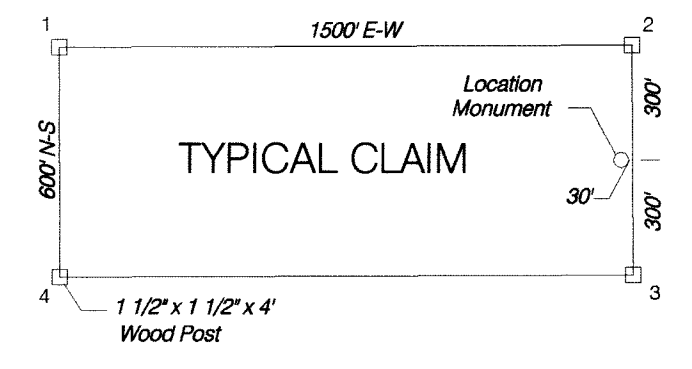


TIE:
 The NW Corner of GN-200 is approximately
 S56°E 1,205' from the NW Cor of Sec 12,
 Twp 25N, Rge 48E



MAP OF THE
 GN-200-234
 LODGE MINING CLAIMS

SECTIONS 11&12
 TOWNSHIP 25N, RANGE 48E
 SECTION 13
 TOWNSHIP 25N, RANGE 48 1/2E
 SECTION 18
 TOWNSHIP 25N, RANGE 49E
 EUREKA COUNTY



LOCATED BY: TREND RESOURCES, LLC
 C/O RICHARD HARRIS
 6121 LAKESIDE DRIVE, SUITE 260
 RENO, NEVADA 89511
 LOCATED: SEPTEMBER 3, 2003

FILED AT THE REQUEST OF Trend Resources
 NEVADA on Mar 1 2004 at 29 mins past PA M.
 RECORDS OF EUREKA COUNTY, NEVADA M. N. REBALEATI, Recorder
 File No. 185709 Per. S. 15.01
292