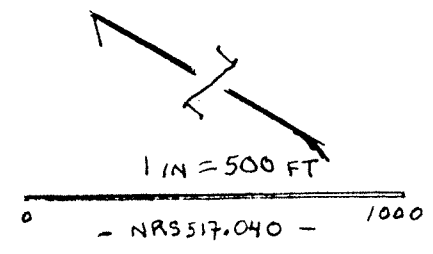


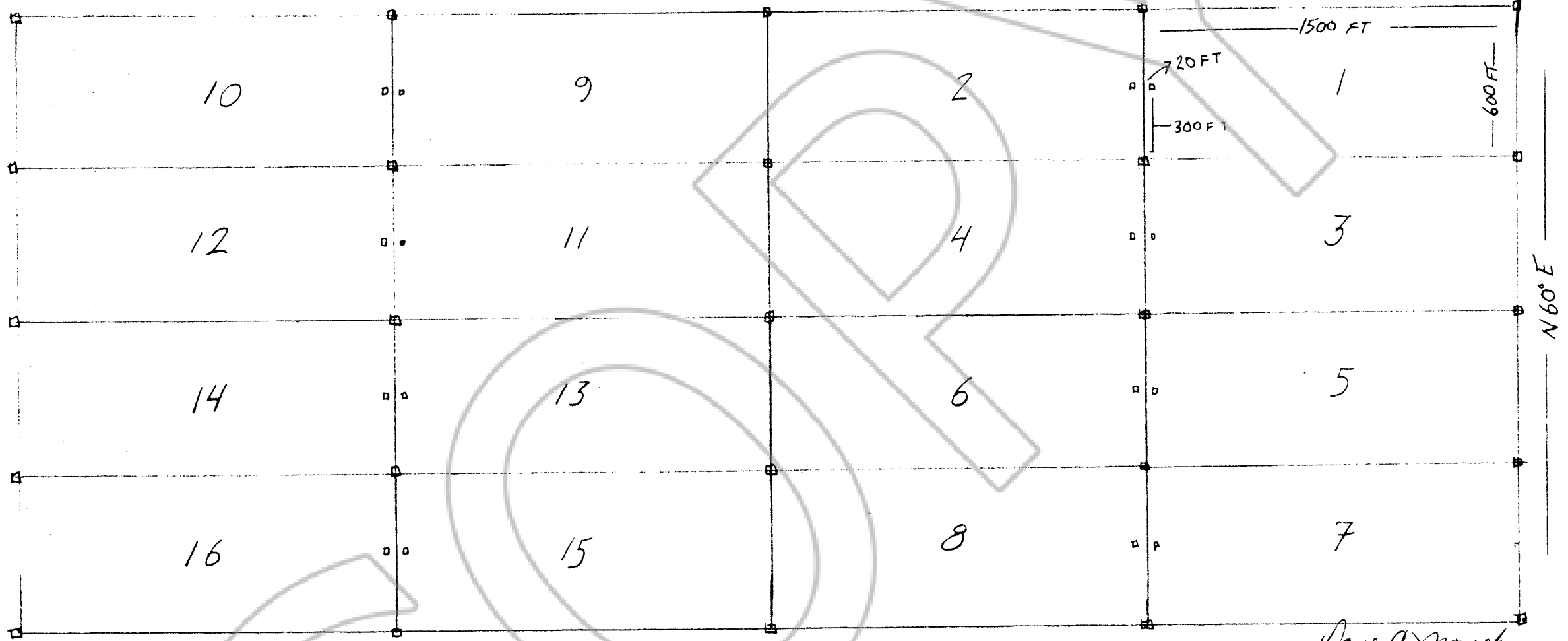
185798

MAP
TEMPLE 1-16 LODES
T19N R52E s. 33
T18N R52E s. 4
EUREKA CO.
NEVADA



- ALL CORNERS 2 IN X 2 IN Wood Posts -
- ALL CLAIMS 1500 FT X 600 FT -
- ALL MONUMENTS 20 FT FROM END LINE -
- FROM SE COR TEMPLE-1
S70°E 11350 FT TO
SE COR S.2 T18N R52E

LOCATED 12/11/2003 DAVE C. MOUGH BOX 1937 NEVADA CITY CA. 95959
N30°W



FILED AT THE REQUEST OF Dave C. Mough
 on March 9 2004 at 17 mins. past 1 P M.
 RECORDS of EUREKA COUNTY, NEVADA M. N. REBALEATI, Recorder
 File No. **185798** Fee \$ 244.00