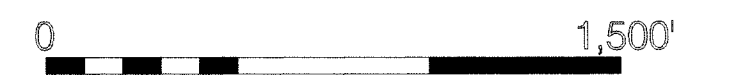


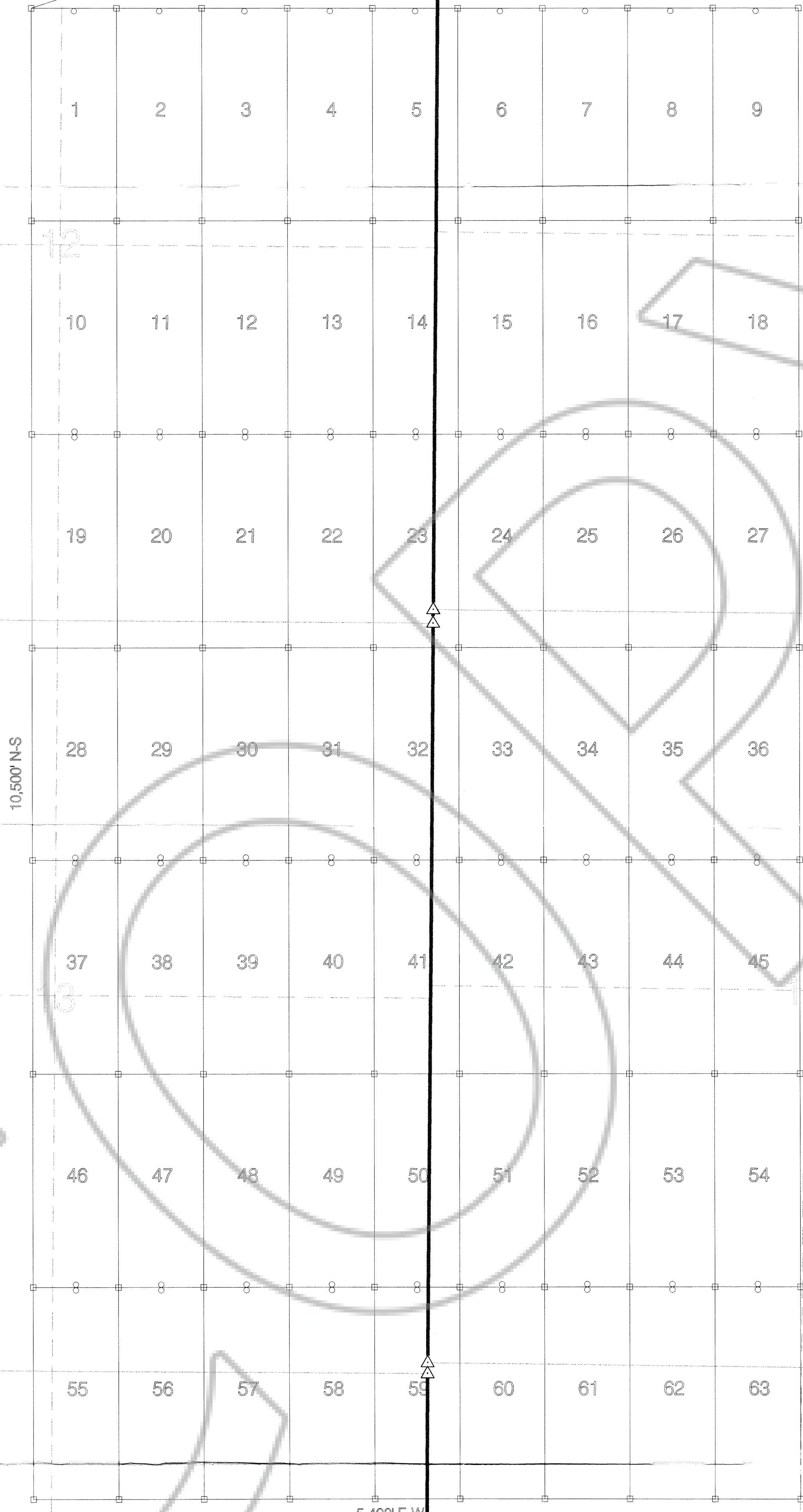


SCALE 1" = 500'



NW Cor of SGB 1 is 3,018' S72°W
from NE Cor Sec 12, T21N, R49E

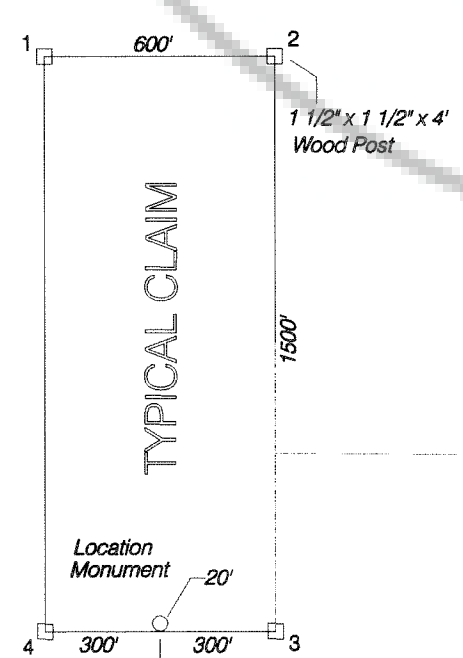
R49E
R50E



10,500' N-S

T21N

5,400' E-W



MAP OF THE SGB 1 THRU SGB 63 LODE MINING CLAIMS

LOCATION DATES
SGB 28 thru SGB 63 12/26/03
SGB 1 thru SGB 27 12/27/03

LOCATOR
TREND RESOURCES, LLC
35 N. EDISON WAY, SUITE 4
RENO, NEVADA 89502

SECTIONS 12, 13 & 24
TOWNSHIP 21N, RANGE 49E, MDBM
SECTIONS 7, 18 & 19
TOWNSHIP 21N, RANGE 50E, MDBM
EUREKA COUNTY
NEVADA

FILED AT THE REQUEST OF Trend Resources
on Mar 19, 2008, at 5 min past 30 M.
RECORDS OF EUREKA COUNTY, NEVADA M. N. REYNOLDS, Recorder
File No. 186054 Fee \$ 749.00