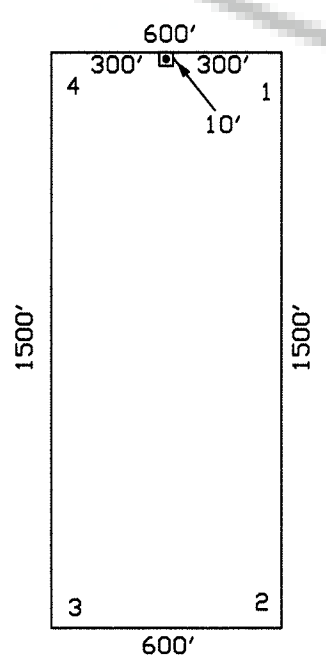
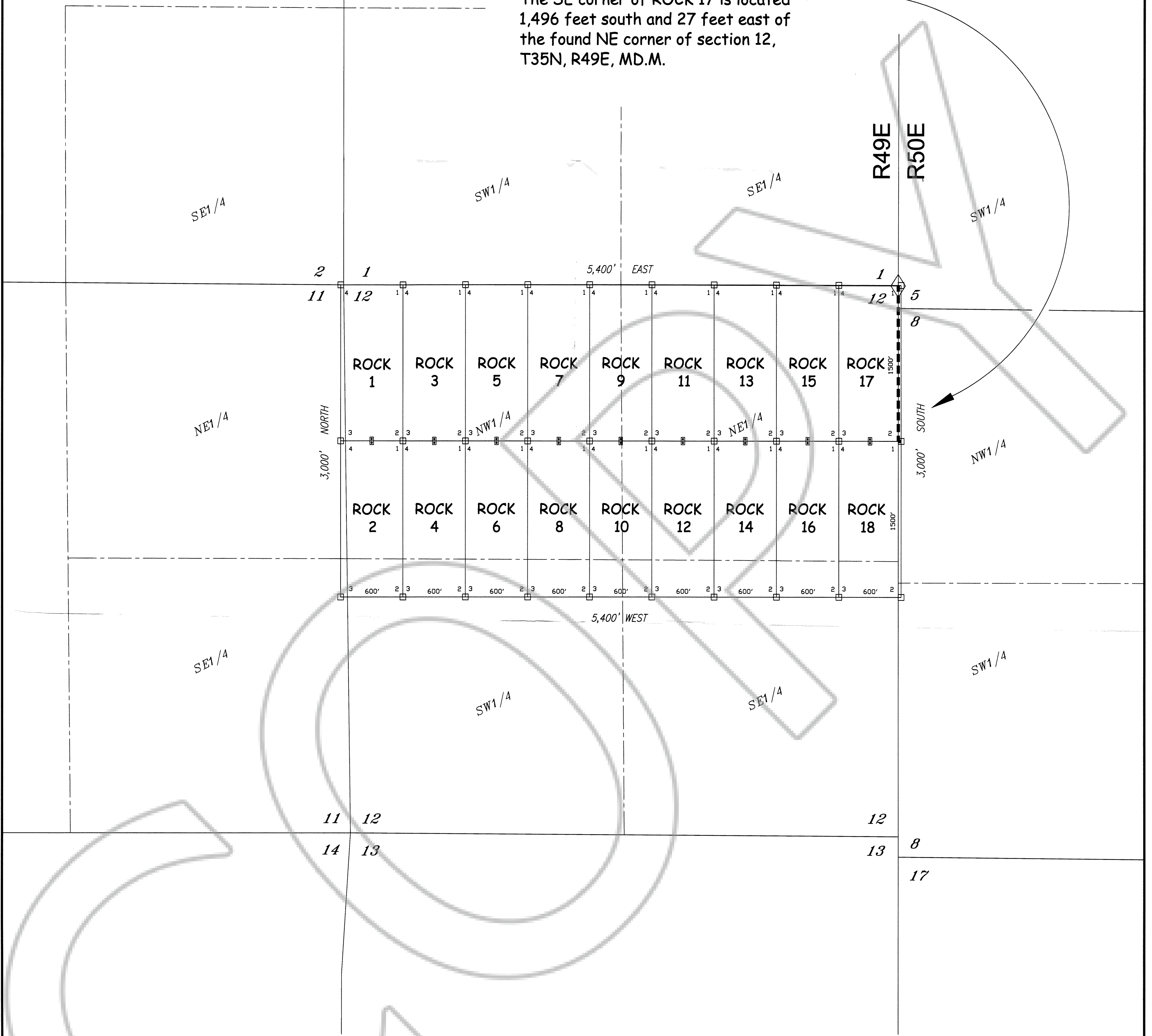


### T35N, R49E MDM

**TIE POINT:**  
The SE corner of ROCK 17 is located 1,496 feet south and 27 feet east of the found NE corner of section 12, T35N, R49E, MD.M.



TYPICAL LODGE CLAIM  
UNLESS OTHERWISE SHOWN  
LOCATION MONUMENT MAY LIE AT EITHER END OF THE CLAIM

**OWNER:**

NEWMONT USA LIMITED d/b/a  
NEWMONT MINING CORPORATION  
P.O. BOX 669  
CARLIN, NEVADA 89822

**LEGEND:**

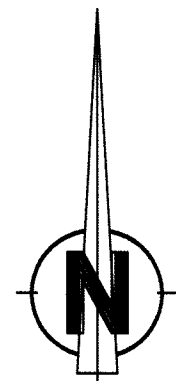
- = 2" x 2" x 4' WOOD POST CLAIM CORNER
- = 2" x 2" x 4' WOOD POST LOCATION MONUMENT
- ◇ = FOUND SURVEY MONUMENT

**NOTES:**

ALL LOCATION MONUMENTS AND CLAIM CORNERS ARE 2" x 2" x 4' WOOD.

LOCATION MONUMENTS ARE SET ON THE CENTERLINE OF EACH CLAIM, 10 FEET FROM THE NEAR ENDLINE AND 1490 FEET FROM THE OPPOSITE ENDLINE, UNLESS OTHERWISE SHOWN.

ALL CLAIMS ARE 1500' LONG BY 600' WIDE UNLESS OTHERWISE SHOWN.



0 500 1000 1500  
1 INCH = 500 FEET

CLAIM MAP OF

### ROCK 1-18

Lode Claims located within  
Sections 1, 2, 11, 12, T35N, R49E  
and Sections 5, 8, T35N, R50E MDM

Eureka County, Nevada

NEWMONT MINING CORPORATION

FILED AT THE REQUEST OF *Newmont Mining Corp*  
on *Mar 23 2004* at *15* mins past *11 A.M.*  
RECORDED BY *186080* COUNTY, NEVADA M. N. REBALEATI, Recorder  
File No. *186080* Fee \$ *274.00*