

Tie Line: 2862' N44W
to NW Cor Sec 30
T24N/R50E

R 49 E

R 50 E

Sec 25

Sec 30

Sec 36

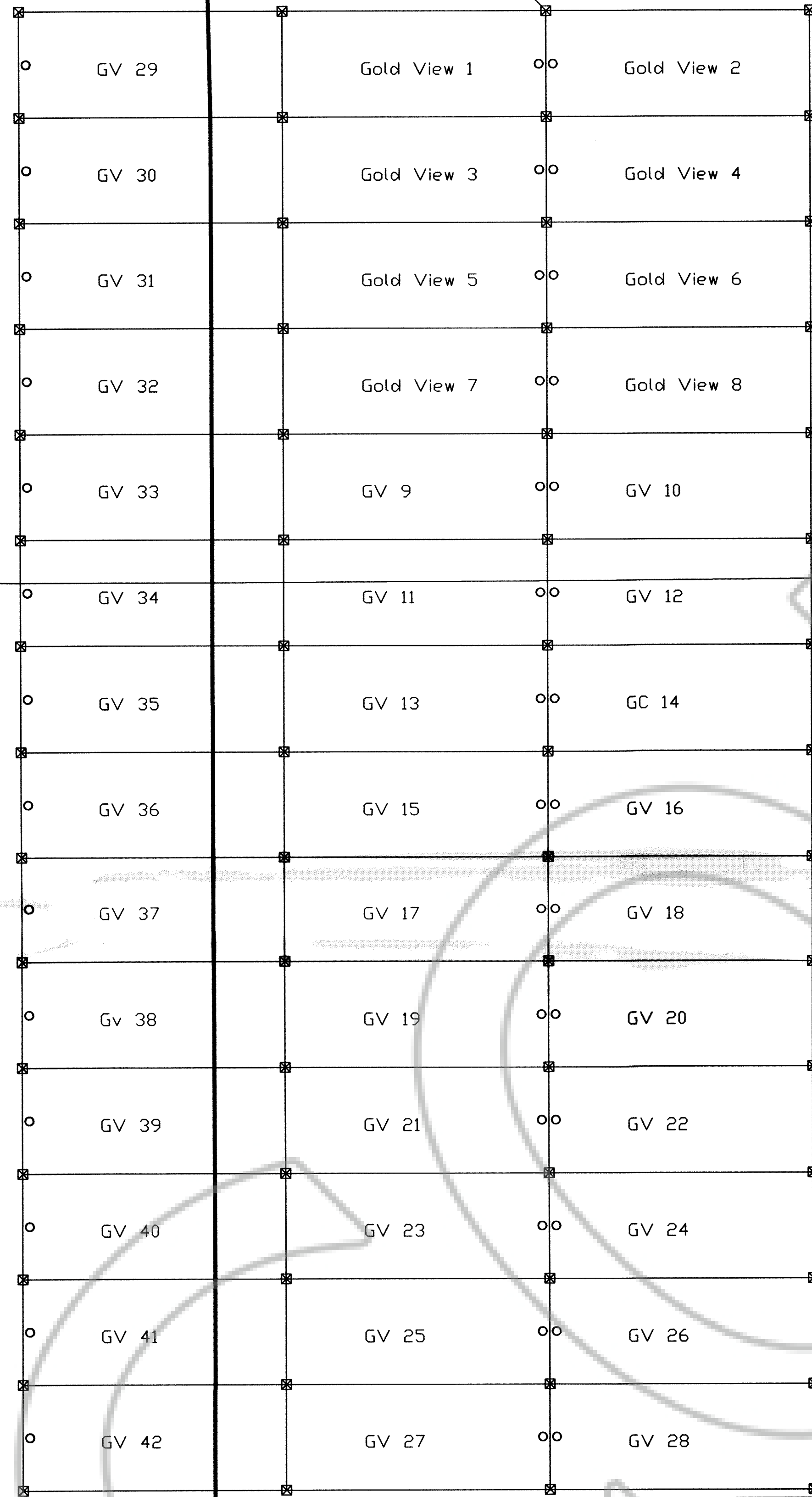
Sec 31

Sec 1

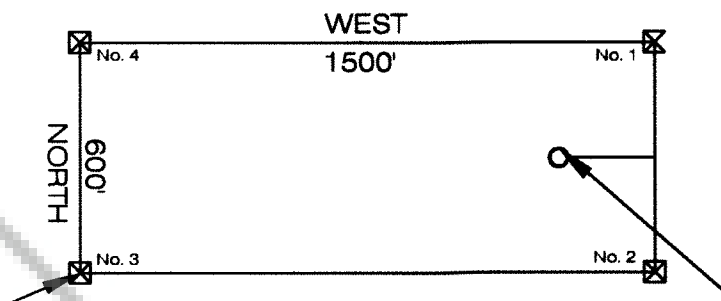
Sec 6

T 24 N

T 23 N

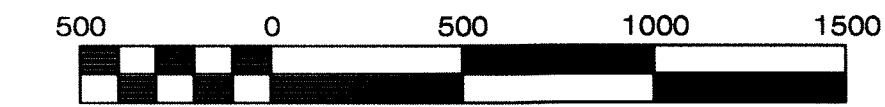


Typical Claim



All Location Monuments are 5' from the end line, or as noted on the plat.

All corner monuments and location monuments are 4x2x2 wooden posts.



Scale 1" = 500'

Claims Located By:
 Hunsaker Inc
 168 E. Glen Brier Drive
 Spring Creek, Nevada 89815

Claims in T24N, R49E, MDBM, sec 25, 36 and
 T24N, R50E, MDBM, sec 30, 31

Gold View 1-8 Located February 12, 2004
 GV 9-28 Located January 6, 2004
 GV 29-42 Located January 5, 2004

FILED AT THE REQUEST OF *Scoonover Expl*
 on *April 1, 2004* at *10:45* mins. past *8 A.M.*
 RECORDS OF EUREKA COUNTY, NEVADA M. N. REBELETTI, Recorder
 File No. **186164** Fee \$ *634.00*

Map Of:
 Gold View Claims 1-8
 GV Claims 9-42
 Eureka County, Nevada

Located For:
 Scoonover Exploration LLC
 P.O. Box 2021
 Elko, Nevada 89803