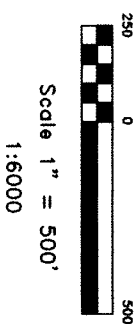
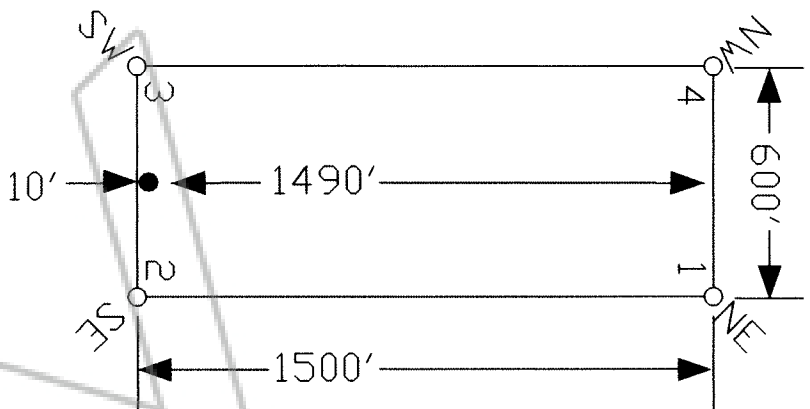
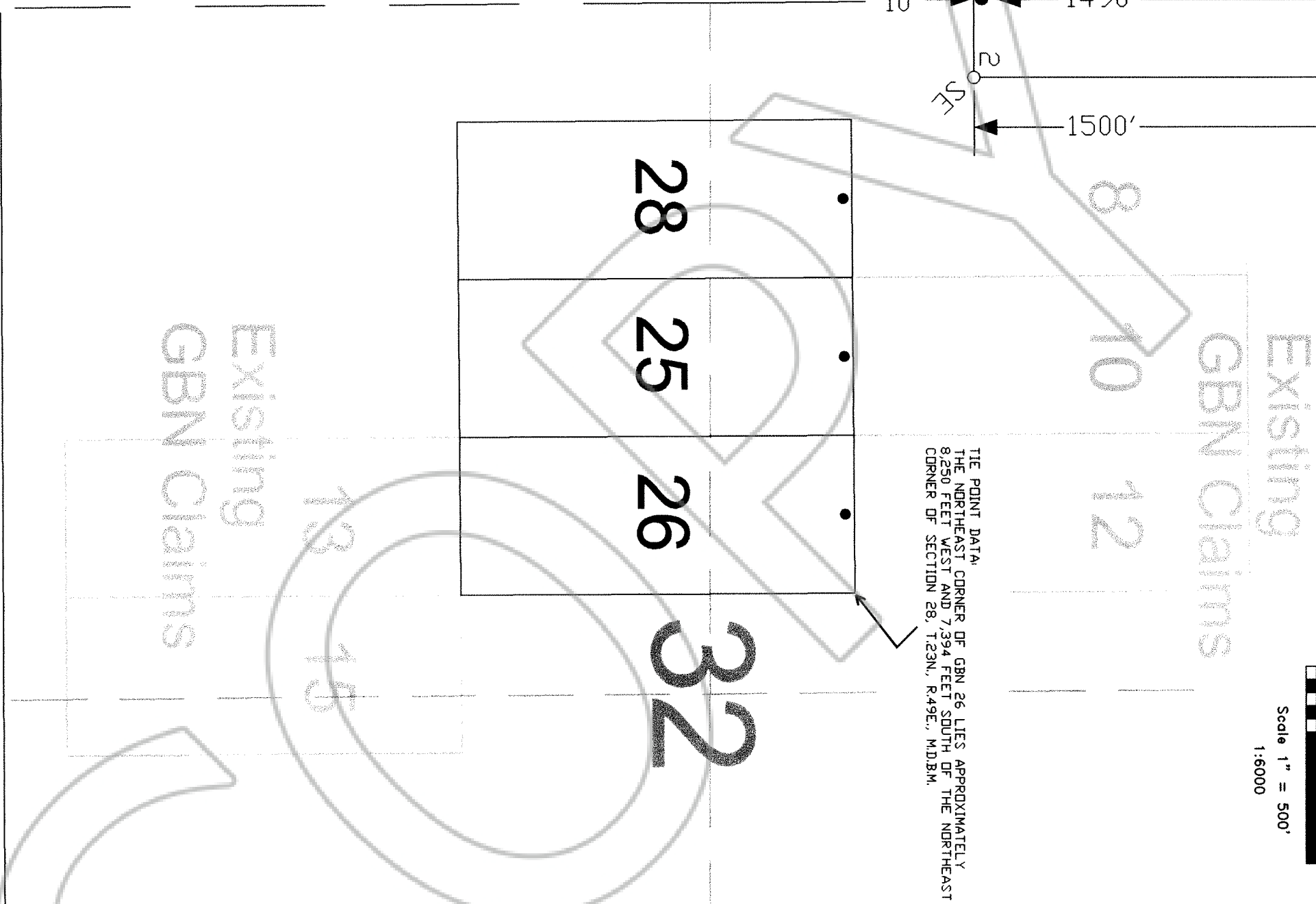


TYPICAL CLAIM



TIE POINT DATA:
 THE NORTHEAST CORNER OF GBN 26 LIES APPROXIMATELY
 8,250 FEET WEST AND 7,394 FEET SOUTH OF THE NORTHEAST
 CORNER OF SECTION 28, T.23N., R.49E., M.D.B.M.



FILED AT THE REQUEST OF *Nevada Gold Ventures*
 ON *April 1* 20 *ad* at *31* mins. past *10* P. M.
 RECORDS OF EUREKA COUNTY, NEVADA M. N. REBALEATI, Recorder
 File No. **186204** Fee \$ *49.00*

LOCATION DATES:
 03/25/04 - GBN 25,26,28

NOTES:
 LOCATION MONUMENTS SET 10' FROM CLAIM END
 CENTERLINES. ALL LOCATION MONUMENTS AND
 CLAIM POSTS ARE 2"x2"x4" WOODEN STAKES.
 DASHED SECTION LINES INDICATE PROJECTED SECTIONS.

	310 SULLY STREET EUREKA, NV 89801 PH: (775) 746-0800 FAX: (775) 746-0807	DATE: March 2004 PERMIT NO.: 03/25/04	LOCATION: Nevada Gold Ventures 369 - 5th Street Eiko, NV 89801 GBN Lode Claims T.23N., R.49E., Eureka County, Nevada
	Nevada Gold Ventures 369 - 5th Street Eiko, NV 89801 GBN Lode Claims T.23N., R.49E., Eureka County, Nevada		