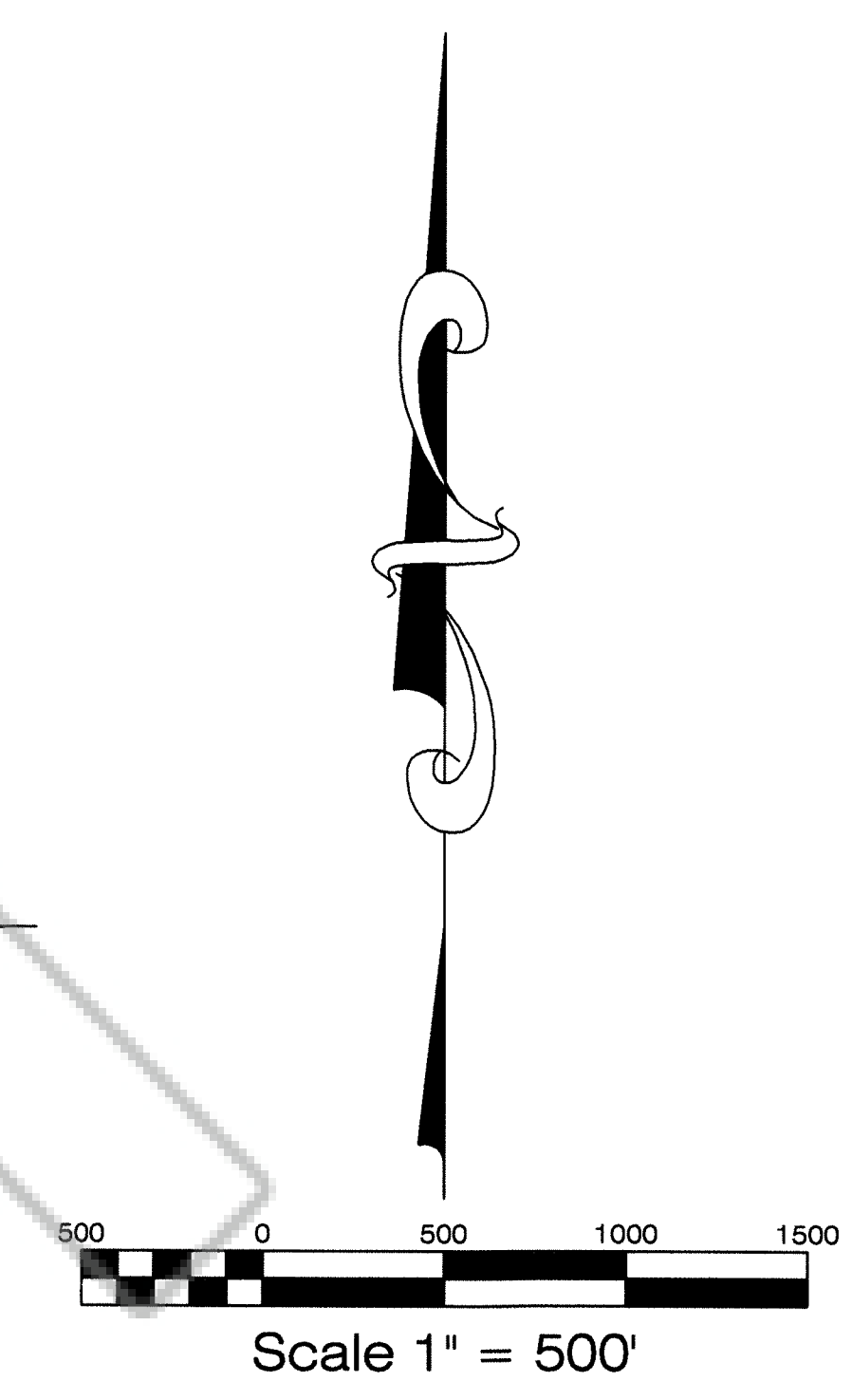
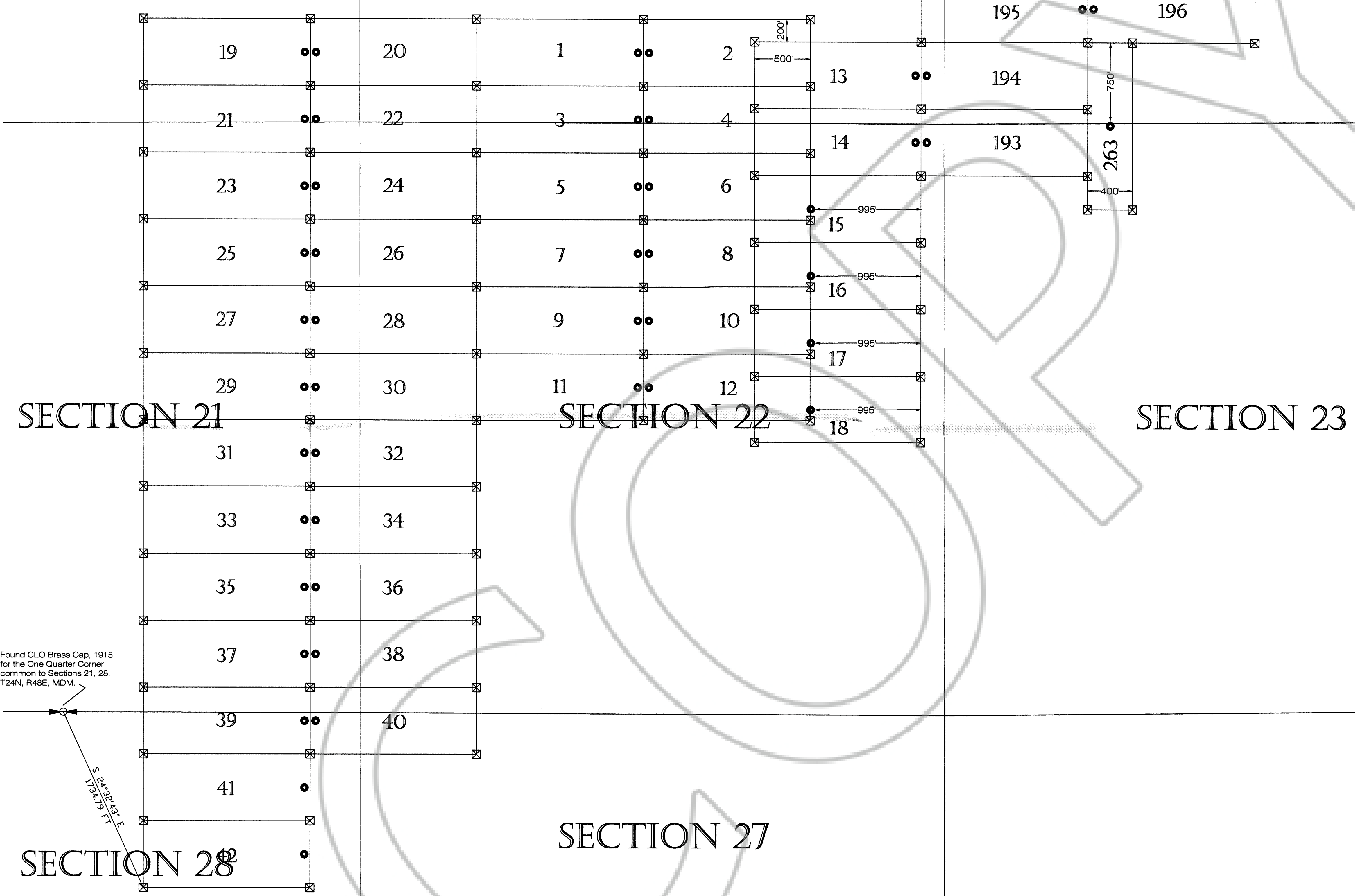


SECTION 16

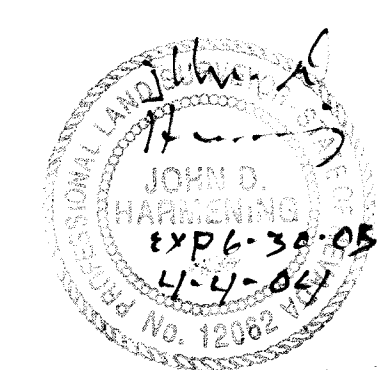
SECTION 15

SECTION 14

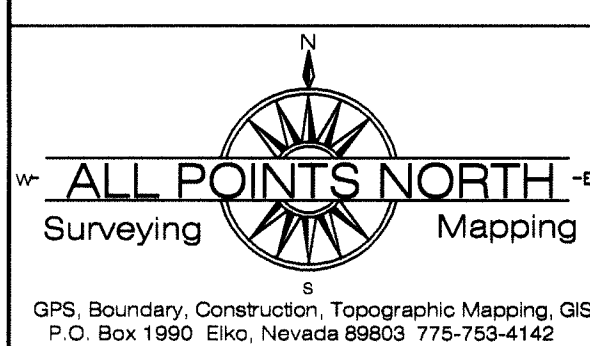
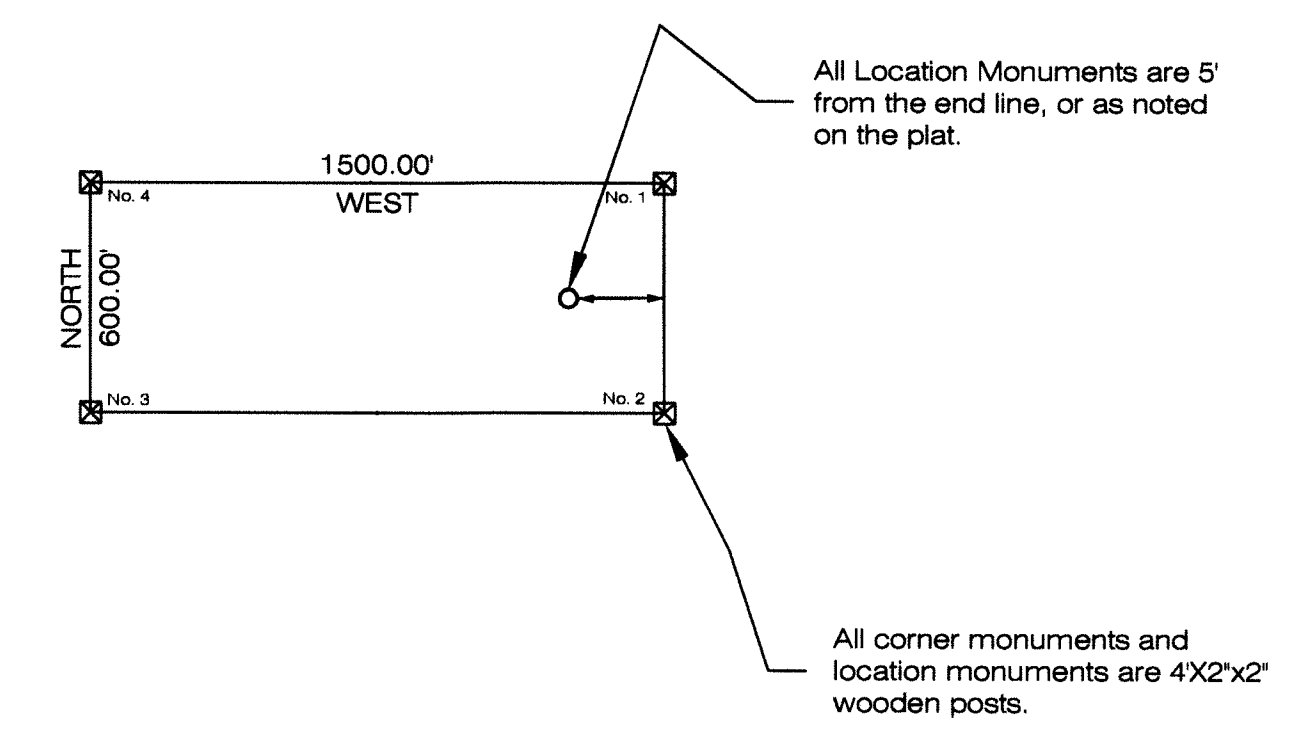


SURVEYOR'S CERTIFICATE
I, John D. Harmening, A Professional Land Surveyor (PLS 12062) Licensed in The State Of Nevada, certify that:

- 1) This plat represents the results of a survey conducted under my direct supervision at the instance of NEVADA PACIFIC GOLD (U.S.), INC., a Nevada Corporation (owner).
- 2) The mining claims surveyed lie within T24N, R48E, MDM, Sections 14, 15, 16, 21, 22, 23, 27, 28 and the survey was completed on March 20, 2004.
- 3) This plat complies with applicable statutes of this state and any local ordinances in effect on the date that the survey was completed, and the survey was conducted in accordance with Chapter 625 of the Nevada Administrative Code.
- 4) The monuments depicted on the plat are of the character shown, occupy the positions indicated and are of sufficient number and durability.



Found GLO Brass Cap, 1915,
for the One Quarter Corner
common to Sections 21, 28,
T24N, R48E, MDM.



ALL POINTS NORTH
P.O. BOX 1990
ELKO, NEVADA 89803

Claims in T24N, R48E, MDM, Sec 14, 15, 16, 21, 22, 23, 27, 28
Claims #1-6; 19-30 Located on 01-14-04, #7-12; 31-42 on 01-15-04
Claims #195-198 Located on 02-24-04, #13-18; 193-198; 263 on 03-11-04

Map Of:
CHS Lode Claims # 1 - 42; 193 - 198
CHS Lode Claim # 263
Eureka County, Nevada

Located For:
Nevada Pacific Gold (US), Inc a Nevada Corp.
P.O. Box 548
Elko, Nevada 89803

FILED AT THE REQUEST OF Nevada Pacific Gold
on April 9, 2004, at 9:44 mins. past 4 A.M.
RECORDS OF EUREKA COUNTY, NEVADA M. N. REBALEATI, Recorder
File No. 186300 Fee \$ 250.00