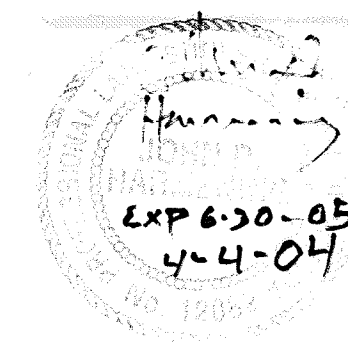


Scale 1" = 500'

## SURVEYOR'S CERTIFICATE

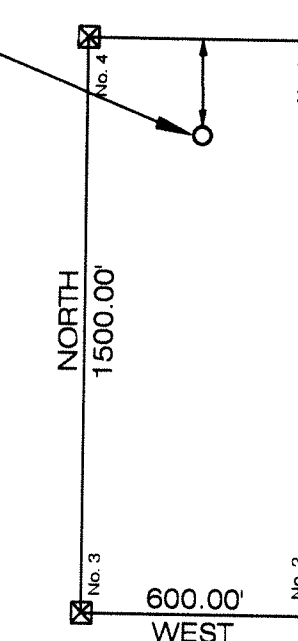
I, John D. Harmening, A Professional Land Surveyor (PLS 12062) Licensed in The State Of Nevada, certify that:

- 1) This plat represents the results of a survey conducted under my direct supervision at the instance of NEVADA PACIFIC GOLD (U.S.), INC., a Nevada Corporation (owner).
- 2) The mining claims surveyed lie within T23N, R48E, MDM, Sections 1, 2, 3 and T24N, R48E, MDM, Sections 34, 35, 36; and the survey was completed on March 20, 2004.
- 3) This plat complies with applicable statutes of this state and any local ordinances in effect on the date that the survey was completed, and the survey was conducted in accordance with Chapter 625 of the Nevada Administrative Code.
- 4) The monuments depicted on the plat are of the character shown, occupy the positions indicated and are of sufficient number and durability.

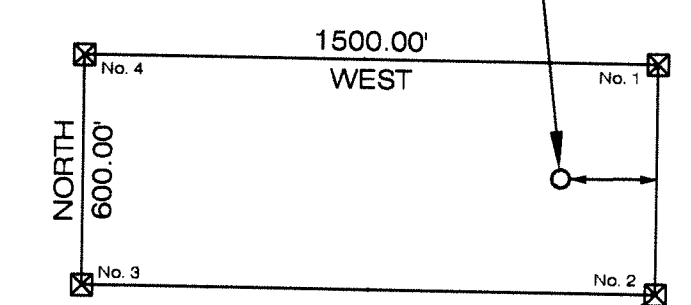


All Location Monuments are 5' from the end line, or as noted on the plat.

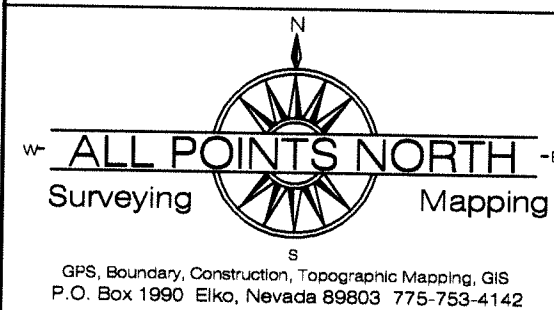
All corner monuments and location monuments are 4'x2'x2' wooden posts.



All Location Monuments are 5' from the end line, or as noted on the plat.



All corner monuments and location monuments are 4'x2'x2' wooden posts.



All Points North  
P.O. Box 1990  
Elko, Nevada 89803

Claims in T23N, R48E, MDM, Sections 1, 2, 3,  
and T24N, R48E, MDM, Sections 34, 35, 36  
Claims Located January 21, 2004

Map Of:

CHS Lode Claims # 54 - 84  
Eureka County, Nevada

Located For:

Nevada Pacific Gold (US), Inc a Nevada Corp.  
P.O. Box 548  
Elko, Nevada 89803

FILED AT THE REQUEST OF Nevada Pacific Gold  
on April 9, 2004, at 10:00 a.m. per 20 APR  
RECORDS OF EUREKA COUNTY, NEVADA M. N. REBALEATI, Recorder  
File No. 186339 Fee \$469.00