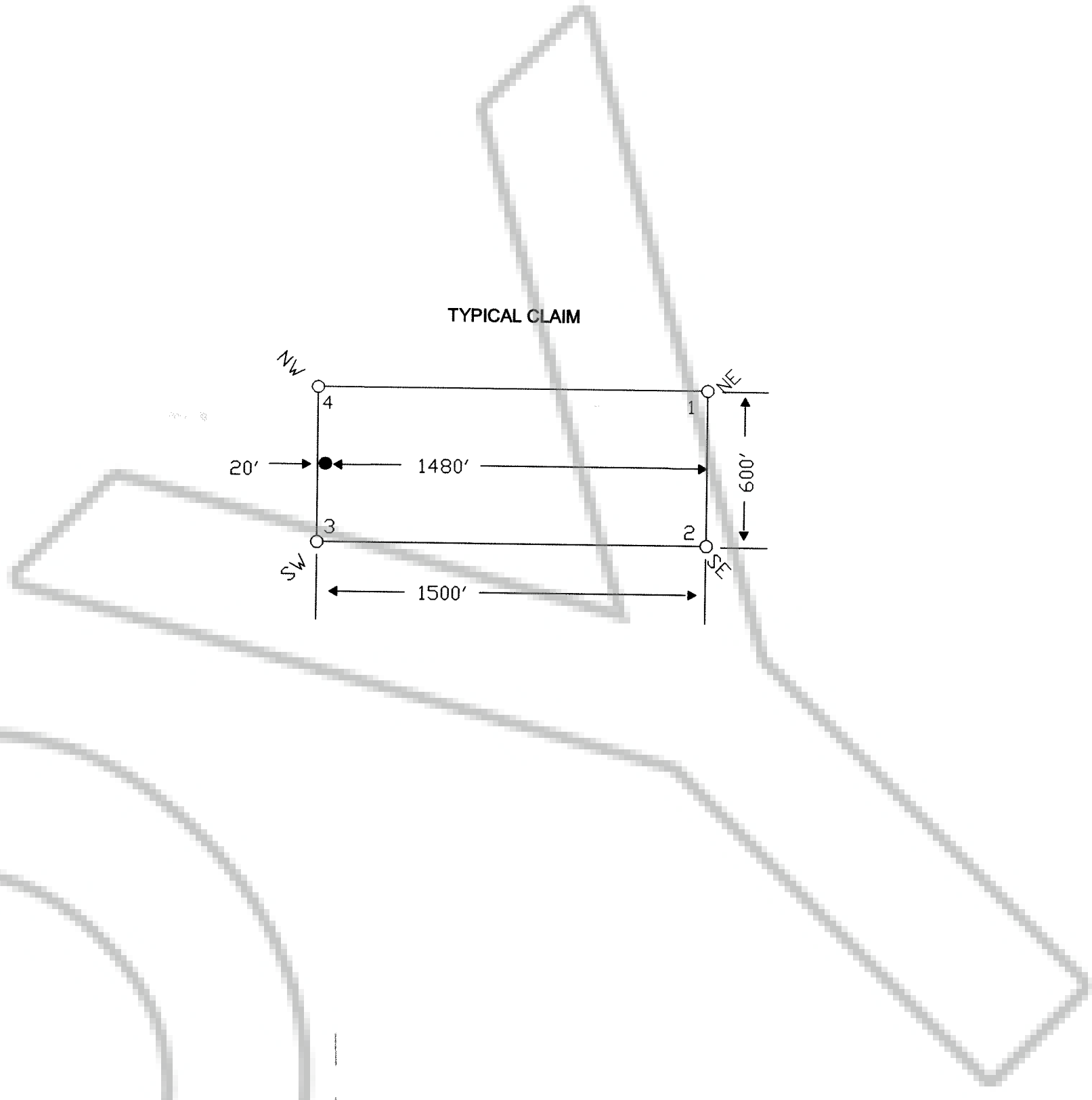
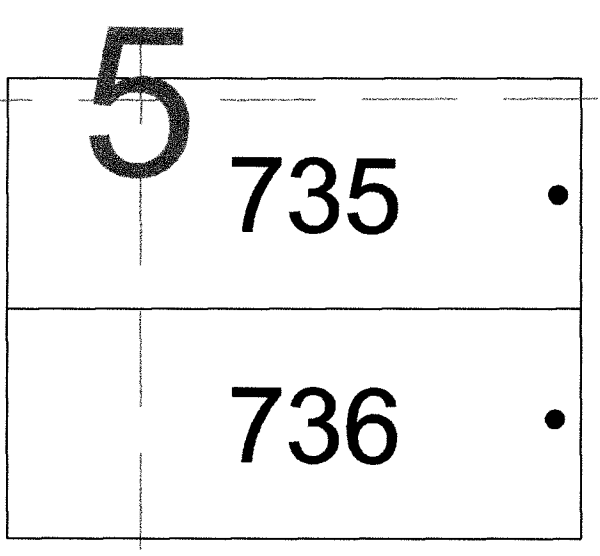
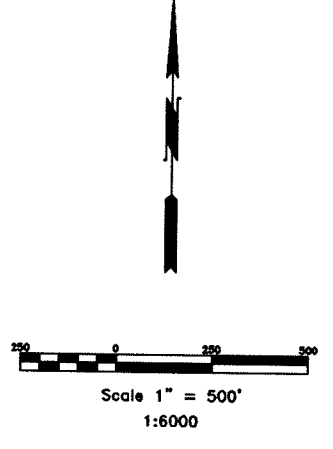


TIE POINT DATA:
THE NORTHWEST CORNER OF PHOENIX 735 LIES APPROXIMATELY
2,152 FEET EAST AND 13,383 FEET NORTH OF THE SOUTHEAST
CORNER OF SECTION 18, T.26N., R.53E., M.D.B.M.



TIE POINT DATA:
THE NORTHWEST CORNER OF PHOENIX 746 LIES APPROXIMATELY
2218 FEET EAST AND 7,389 FEET NORTH OF THE SOUTHEAST
CORNER OF SECTION 18, T.26N., R.53E., M.D.B.M.

Eureka County Line

8	746	••	745	767	•
	748	••	747	768	•
	750	••	749	769	•
	752	••	751	770	•
	754	••	753	771	•
	756	••	755	772	•
	758	••	757	773	•
17	760	••	759	774	•
	762	••	761	775	•
	764	••	763	776	•
	766	••	765	777	•

16

LOCATION DATES:
01/22/04 - Phoenix 735-736,745-777
(35 Total Claims)

NOTES:
LOCATION MONUMENTS SET 20' FROM CLAIM END
CENTERLINES. ALL LOCATION MONUMENTS AND CLAIM
POSTS ARE 2"x2"x4' WOODEN STAKES.

DASHED SECTION LINES INDICATE PROJECTED SECTIONS.

FILED AT THE REQUEST OF *Golden Gryphon*
on *Apr 20* 20 *04* at *44* mins past *2 P*.M.
RECORDS OF EUREKA COUNTY, NEVADA M. N. REBALEATI, Recorder
File No. **186661** Fee \$ *529.00*



Location: Golden Gryphon USA Inc.
1400 Tanager Place RR21, Roberts Creek, BC VON 2W1
Phoenix 735-736,745-777 Lode Claims
T.26N.,R.53E.; Eureka County, Nevada

DATE: April 2004
ACAD FILE NAME: *GoldenGryphon_186661.dwg*
DRAWN BY: *sm*