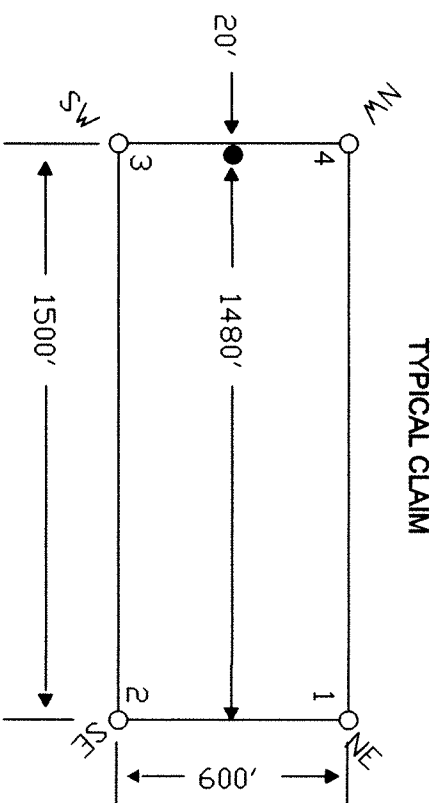
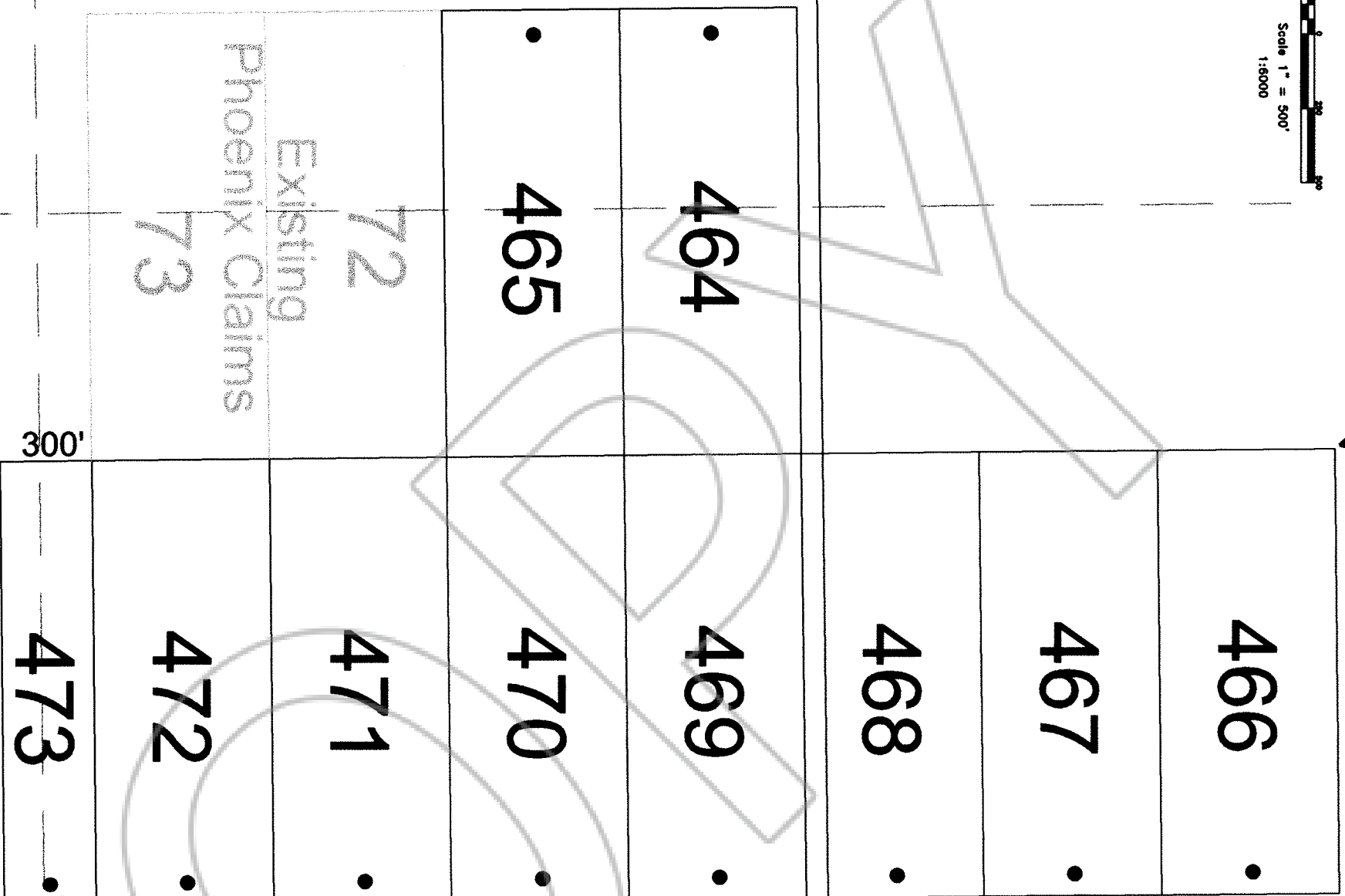


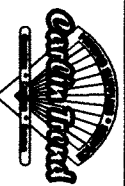
THE POINT DATA:
THE NORTHWEST CORNER OF PHOENIX 466 LIES APPROXIMATELY
2,128 FEET WEST AND 1,704 FEET NORTH OF THE NORTHEAST
CORNER OF SECTION 19, T.27N., R.53E., M.D.B.M.



LOCATION DATES:
01/22/04 - Phoenix 464-473
(10 Total Claims)

1817
1920

FILED AT THE REQUEST OF Golden Gryphon
on Apr 20 20 04, at 56 mins. past 20 M.
RECORDS DEPUTY CLERK, EUREKA COUNTY, NEVADA M. N. REBALEATI, Recorder
File No. 186715 Fee \$ 154.00



Golden Gryphon USA Inc.
1400 Tanager Place R821, Roberts Creek, BC V0N 2W1
Phoenix 464-473 Lode Claims
T.27N., R.53E.; Eureka County, Nevada

309 - 5th STREET
EUREKA, NV 89001 FAX: (775) 776-0687

DATE
APR 20 2004

RECORDS DEPUTY CLERK

FILE NO.

186715

NOTES:
LOCATION MONUMENTS SET 20' FROM CLAIM END
CENTERLINES. ALL LOCATION MONUMENTS AND CLAIM
POSTS ARE 2"x2"x4' WOODEN STAKES.