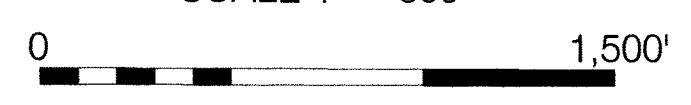




SCALE 1" = 500'



23

24

26

25

35

36

T24N

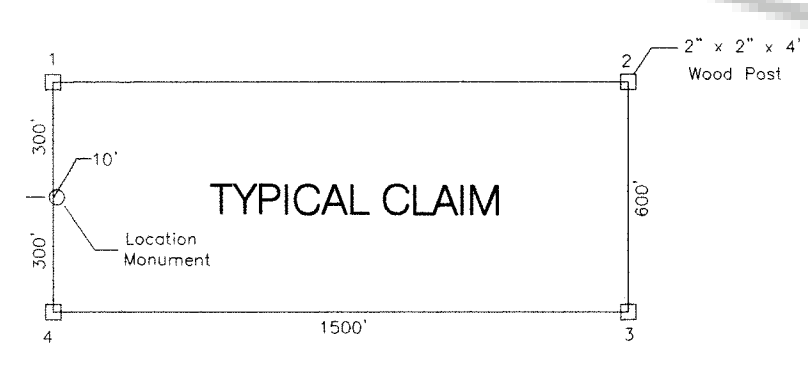
T23 1/2N

R49E

R50E

R49E

R50E



LOCATION DATES	
PH 1,3,5,7,9,11,13,156 THRU 165	2/9/04
PH 2,4,6,8,10,12,14 THRU 70,155	2/10/04
PH 91 THRU 106	2/11/04
PH 83 THRU 90	2/12/04
PH 71 THRU 82, 125 THRU 136, 138	2/13/04

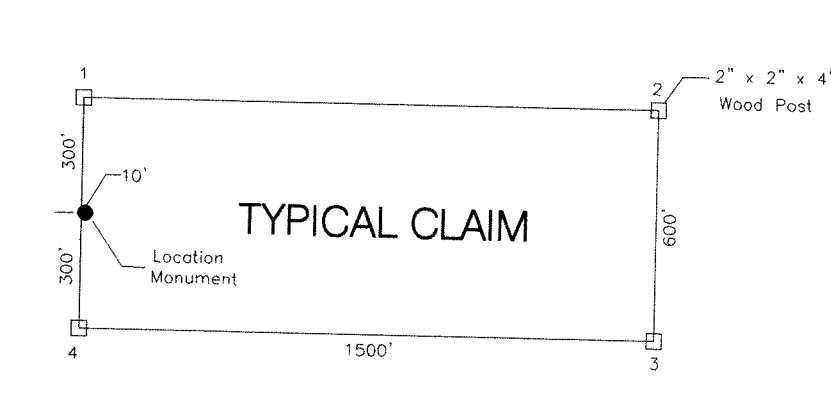
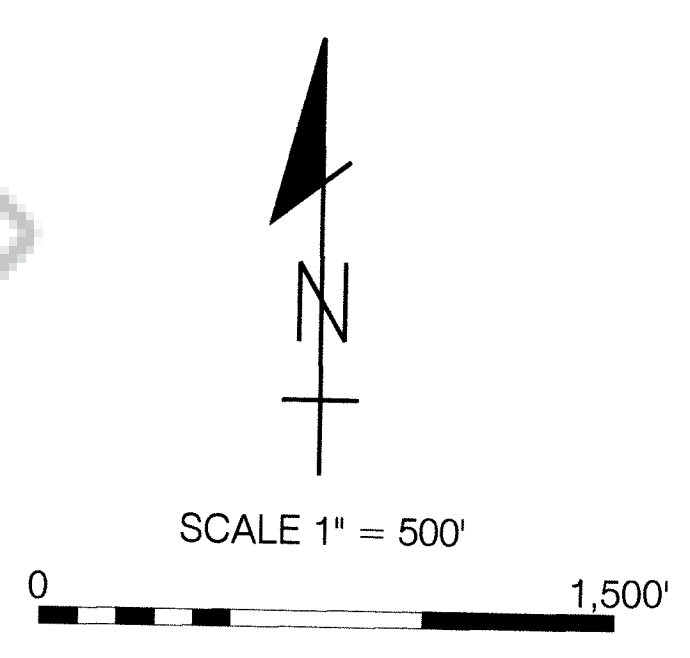
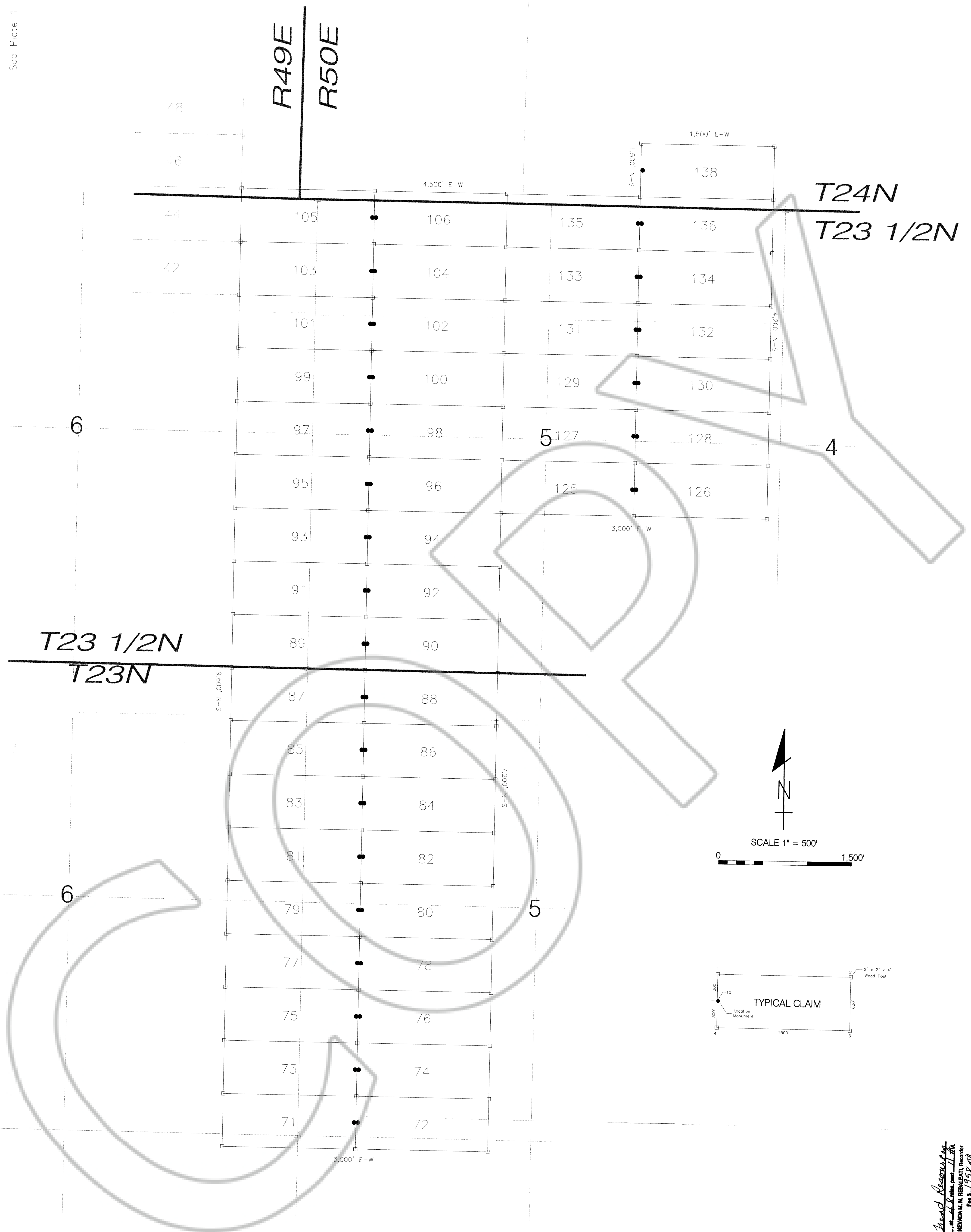
LOCATOR
 TREND RESOURCES, LLC
 35 N. EDISON WAY, SUITE 4
 RENO, NEVADA 89502

MAP OF THE
 PH 1 THRU 106, 125 THRU 136, 138 &
 155 THRU 165 LODE MINING CLAIMS

SECTIONS 23 THRU 26, 35 & 36
 TOWNSHIP 24N, RANGE 49E, MDBM
 SECTION 31
 TOWNSHIP 24N, RANGE 50E, MDBM
 SECTION 1
 TOWNSHIP 23 1/2N, RANGE 49E, MDBM
 SECTIONS 5 & 6
 TOWNSHIP 23 1/2N, RANGE 50E, MDBM
 SECTIONS 5 & 6
 TOWNSHIP 23N, RANGE 50E, MDBM
 EUREKA COUNTY
 NEVADA

FILED AT THE REQUEST OF *Trend Resources*
 on *2/13/04* at *10:48* a.m. post *L.A.M.*
 RECORDS OF EUREKA COUNTY, NEVADA M.N. RECORDED
 File No. **187288** Fee \$ **158.70**

See Plate 1



**MAP OF THE
PH 1 THRU 106, 125 THRU 136, 138 &
155 THRU 165 LODGE MINING CLAIMS**

SECTIONS 23 THRU 26, 35 & 36
TOWNSHIP 24N, RANGE 49E, MDBM
SECTION 31
TOWNSHIP 24N, RANGE 50E, MDBM
SECTION 1
TOWNSHIP 23 1/2N, RANGE 49E, MDBM
SECTIONS 5 & 6
TOWNSHIP 23 1/2N, RANGE 50E, MDBM
SECTIONS 5 & 6
TOWNSHIP 23N, RANGE 50E, MDBM
EUREKA COUNTY
NEVADA

PH	LOCATION DATES	LOCATOR
PH 1,3,5,7,9,11,13,156 THRU 165	2/9/04	TREND RESOURCES, LLC
PH 2,4,6,8,10,12,14 THRU 70,155	2/10/04	35 N. EDISON WAY, SUITE 4
PH 91 THRU 106	2/11/04	RENO, NEVADA 89502
PH 83 THRU 90	2/12/04	
PH 71 THRU 82, 125 THRU 136, 138	2/13/04	

FILED AT THE REQUEST OF: *Trend Resources, LLC*
on *May 3, 2004* at *11:48 AM*
RECORDS OF EUREKA COUNTY, NEVADA
Recorder
File No. **187286**