

NLM GROUP OF LODE CLAIMS - No. 43 THROUGH No. 92  
IN THIS AREA

17

16

15

N

Mag. NORTH  
14.8° Decl. (2000)

SCALE IN FEET  
0 500 1000 1500 2000  
(1 inch = 500 feet)

20

21

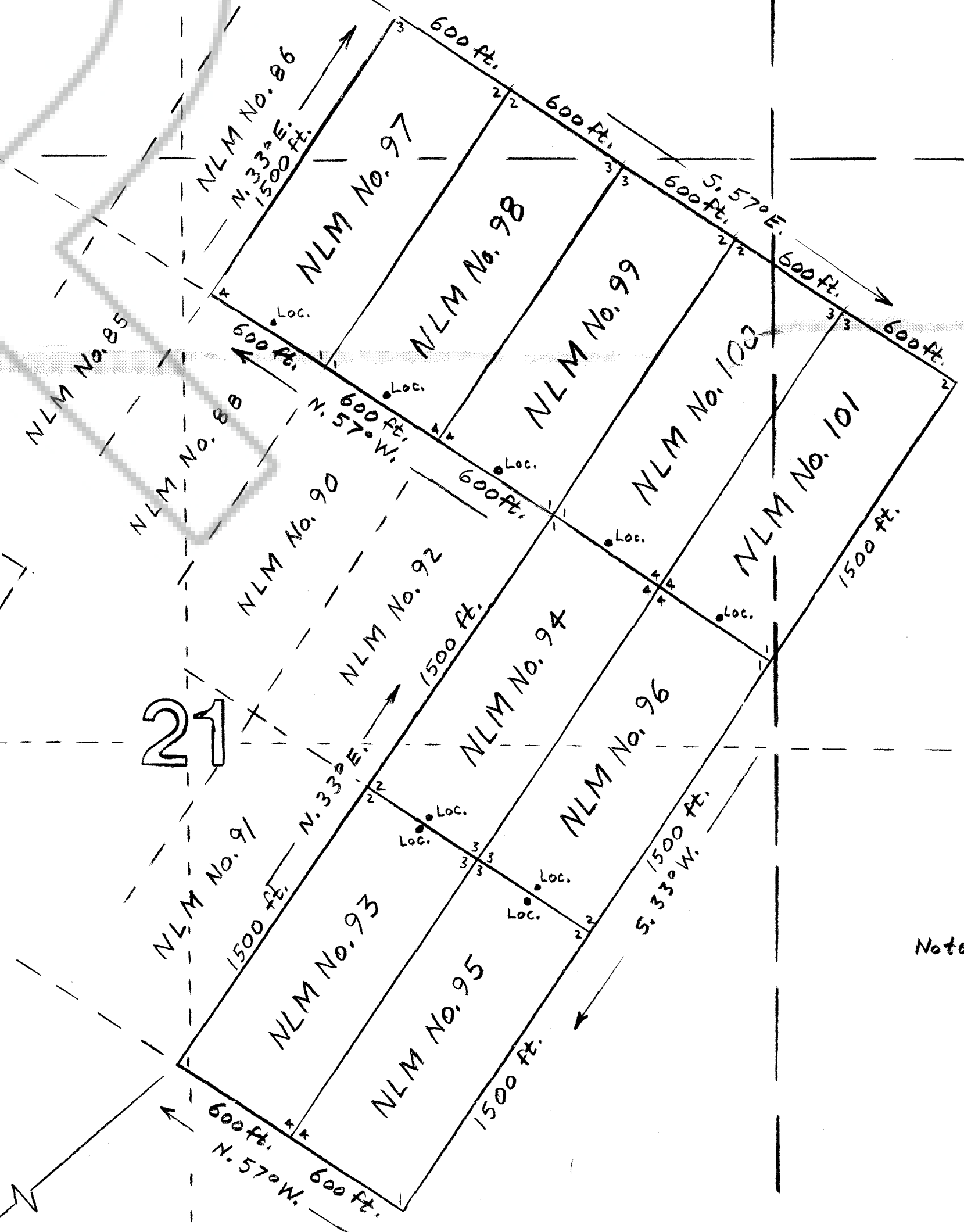
22

MAP OF THE NLM No. 93 THROUGH No. 101 LODE CLAIMS

Claims located April 19, 2004 for Owyhee Exploration, LLC, 238 W. Parliament Ct., Boise, ID 83706-4300  
by: Don H. Adair, agent  
Situating in the Lone Mountain area of Eureka County, Nevada, in unsurveyed T. 20N., R. 51E., MDBM  
Unsurveyed section lines are projected based on MT Plat, BLM surface Mgmt. Status Map (2000 Ed.) of the  
Simpson Park Mts. 30' x 60' Quad., and USGS Topo Maps of the Bartine Ranch and Hay Ranch 7 1/2' Quads.

Note: "Loc." designates the location  
Monument on each claim, each  
situated 10 feet from an endline  
on the centerline of the claim

5.48° W. 17,500 Ft.  
To S.W. Corner of unsurveyed  
T. 20 N., R. 51 E. MDBM



FILED AT THE REQUEST OF *Owyhee Exploration*  
on *May 3 2004* at *6* mins past *1 P.M.*  
RECORDS & EUREKA COUNTY, NEVADA M. N. REBALEATI, Recorder  
File No. *187298* Fee \$ *139.00*