

The NE Corner
of Kel 1 bears
S20°32'E and is
3750' from the
NW corner of
Section 11 T22N
R49E

T22N R49E

12

R49E

R50E

R49E

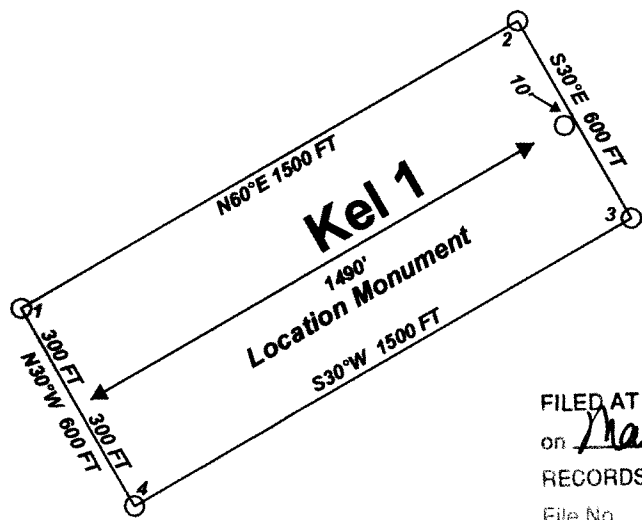
R50E

Claim Location Map for Kel 1-136 and 141-148
Map 1 of 2

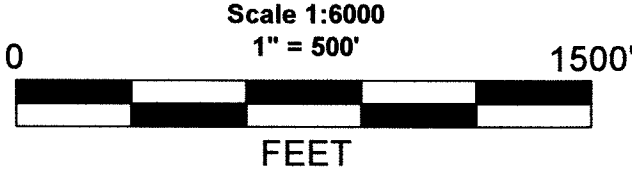
"Kel" lode claims 31 - 68 were located on Feb. 22, 2004 and
"Kel" lode claims 1 - 30 and 69-88 were located on Feb. 23, 2004 and
"Kel" lode claims 111 - 136 were located on Feb. 24, 2004 and
"Kel" lode claims 89 - 110 and 137-148 were located on Feb. 25, 2004
in
Sections 10-14, 23-25 and 36
Township 22 North
Range 49 East
and in
Sections 19, 29, and 30
Township 22 North
Range 50 East
Eureka County, Nevada
Locator:
White Knight (U.S.) Inc.
121 Woodland Ave Suite 140
Reno Nv. 89523

Notes:
Location Monuments are set 10' from claim end lines unless noted otherwise.
All location and corner monuments are 2" X 2" X 4' wooden posts with scribed metal tags. All claims are 600' by 1500' unless noted otherwise.

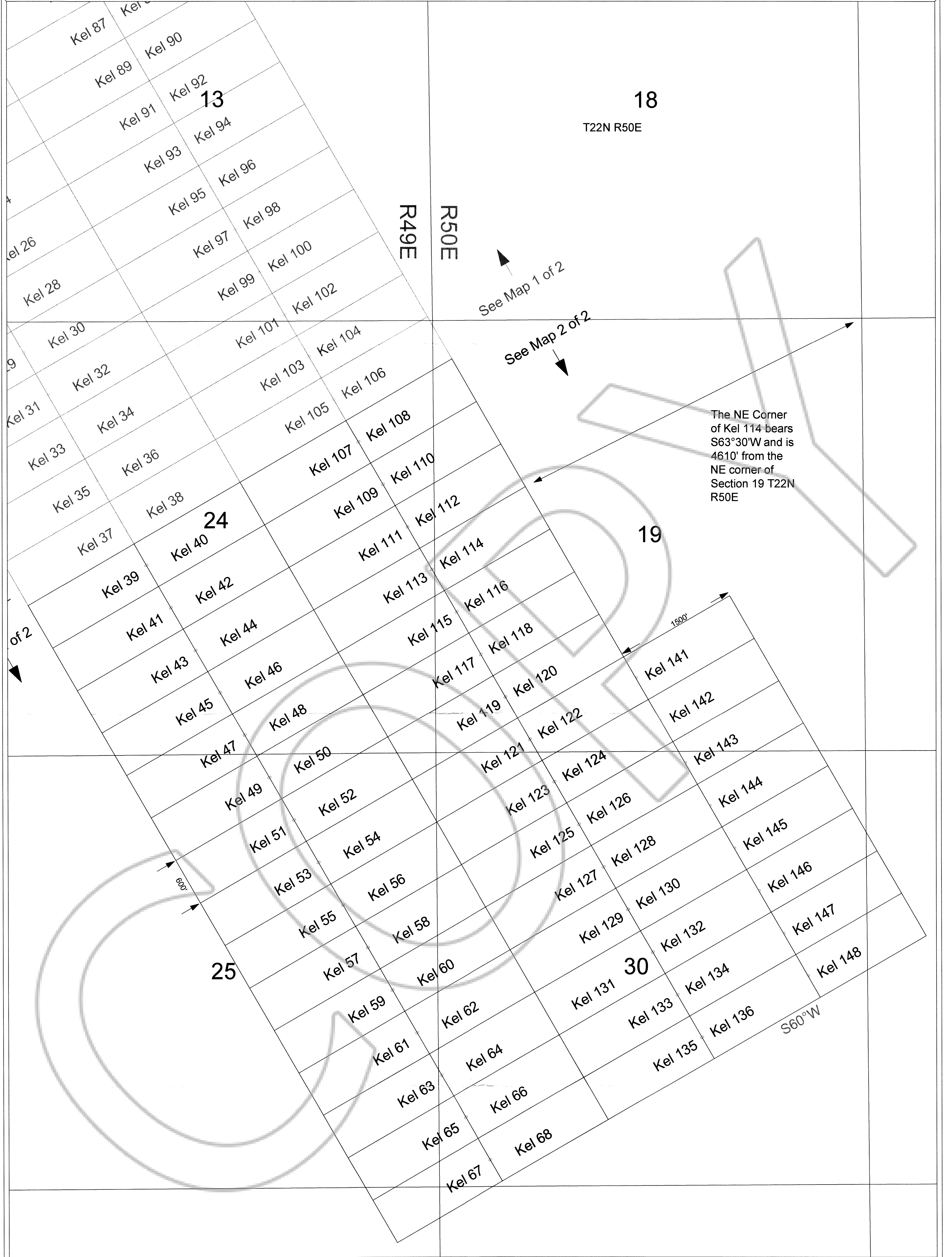
Typical Claim



FILED AT THE REQUEST OF *White Knight U.S. Inc.*
on *May 17* 20 *04* at *8:00* mins. past *3:00* P.M.
RECORDS OF EUREKA COUNTY, NEVADA M. N. REBALEATI, Recorder
File No. **187827** *2164.00*



MINING CLAIM LOCATION MAP Kel 1-136 and 141-148 Lode Mining Claims White Knight (U.S.) Inc. 121 Woodland Ave Suite 140 Reno Nv. 89523 Kel_ClaimMap_1_148.dwg March 17, 2004 Drawn By: G.I.S. Land Services Surveyed By: T&T Exploration L.L.C. Datum: 1927 Projection: UTM Zone 11 Units: Feet

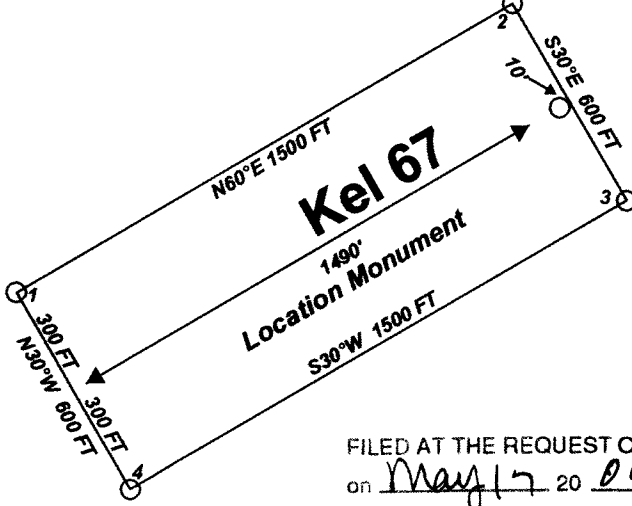


"Kel" lode claims 31 - 68 were located on Feb. 22, 2004 and
"Kel" lode claims 1 - 30 and 69-88 were located on Feb. 23, 2004 and
"Kel" lode claims 111 - 136 were located on Feb. 24, 2004 and
"Kel" lode claims 89 - 110 and 141-148 were located on Feb. 25, 2004
in
Sections 10-14, 23-25 and 36
Township 22 North
Range 50 East
and in
Sections 19, 29, and 30
Township 22 North
Range 49 East
Eureka County, Nevada
Locator:
White Knight (U.S.) Inc.
121 Woodland Ave Suite 140
Reno Nv. 89523

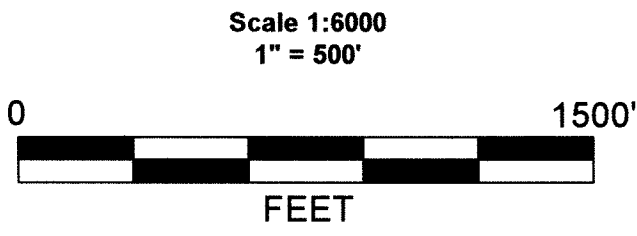
Claim Location Map for Kel 1-136 and 141-148
Map 2 of 2

Notes:
Location Monuments are set 10' from claim end lines unless noted otherwise. All location and corner monuments are 2" X 2" X 4' wooden posts with scribed metal tags. All claims are 600' by 1500' unless noted otherwise.

Typical Claim



FILED AT THE REQUEST OF *White Knight U.S. Inc.*
on *May 17, 2004*, at *1:00* p.m., past *3:00* p.m.
RECORDS OF EUREKA COUNTY, NEVADA M. N. REBALEATI, Recorder
File No. **187827** Page 5



MINING CLAIM LOCATION MAP Kel 1-136 and 141-148 Lode Mining Claims White Knight (U.S.) Inc. 121 Woodland Ave Suite 140 Reno Nv. 89523 Kel_ClaimMap_1_148.dwg March 17, 2004 Drawn By: G.I.S. Land Services Surveyed By: T&T Exploration L.L.C. Datum: 1927 Projection: UTM Zone 11 Units: Feet
