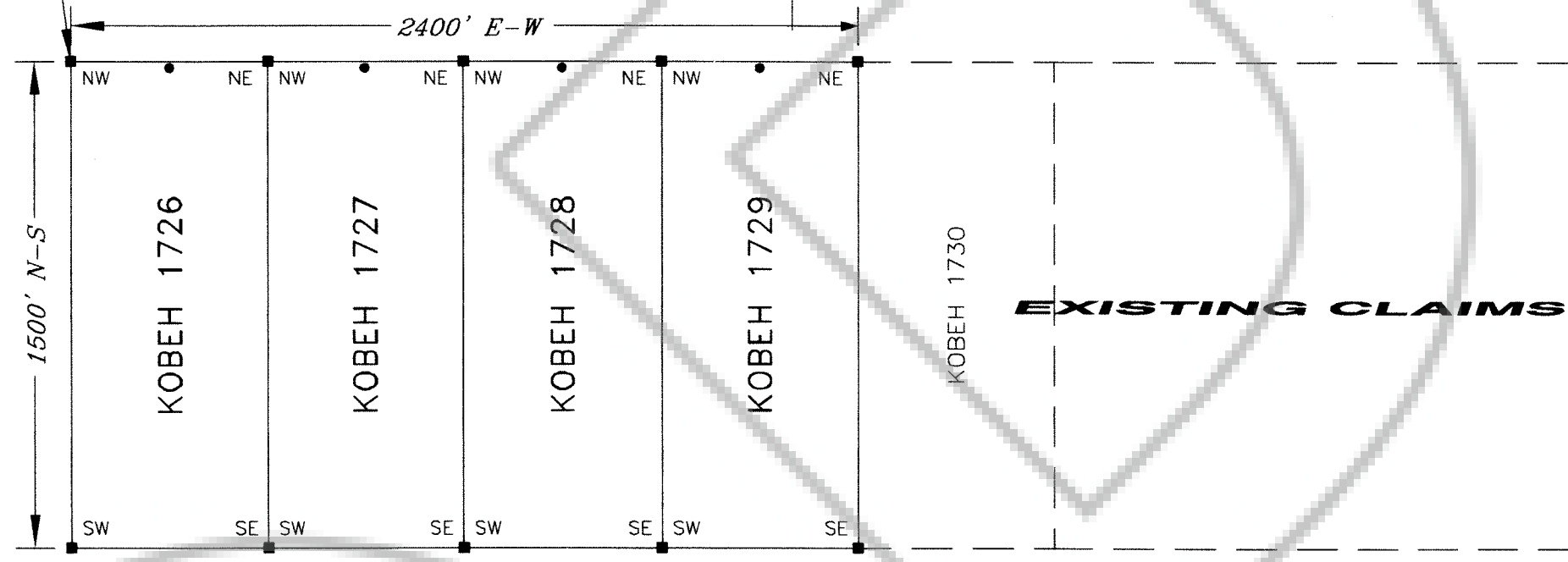


R 51 E

30 29
31 32

29 28
32 33

TIE: ~2887' S7'28"E



31 32
6 5

T 22 N
T 21 N

32 33
5 4

6 5
7 8

5 4
8 9

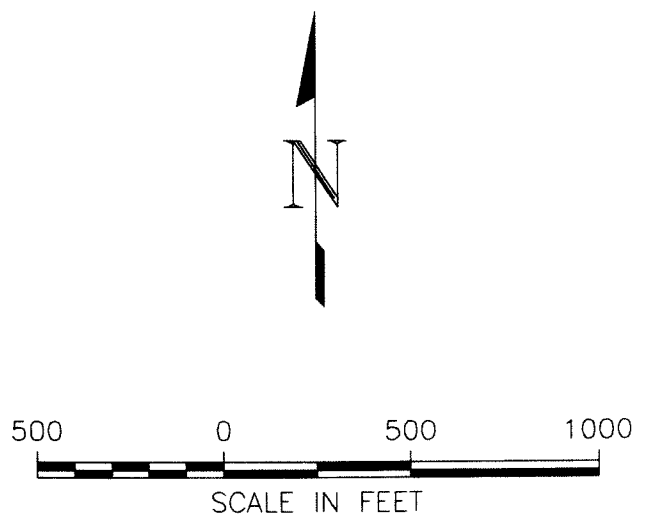
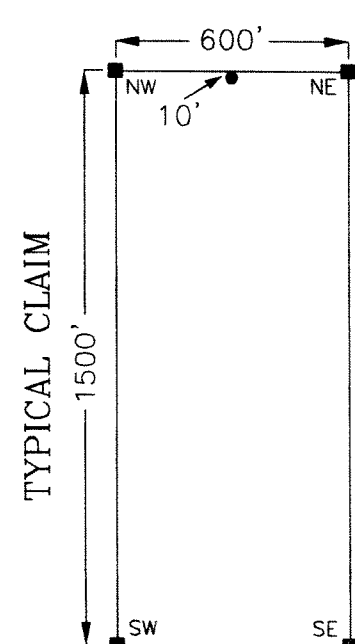
EXPLANATION

- Monuments of Location are set with 2"x2"x4' wood posts.
 - Claim corners are set with 2"x2"x4' wood posts.
- All claims measure 600' x 1500'.
Monuments of Location are set 10' into claim.

LOCATION DATE:
KOBEL 1726-1729 May 13, 2004

LOCATOR:
Nevada Eagle Resources LLC
Douglas R. Bowden
P. O. Box 18127
Reno, NV 89511

TIE:
The NW Corner of KOBEL 1726 bears approximately 2887'
S7'28"E from the NW Corner of Sec. 32, T22N-R51E.



FILED AT THE REQUEST OF *Nevada Eagle Resources*
on *May 25* 20 *04* at *9* mins. past *P.M.*
RECORDS OF EUREKA COUNTY, NEVADA M. N. REBALEATI, Recorder
File No. **187887** Fee \$ *64.00*

KOBEL 1726-1729 Lode Mining Claims	
Sec. 32, T22N-R51E, M.D.B.&M. Eureka County, Nevada	
Drawn By: JAT	Date: May 18, 2004
Drawing: KOBEL1726-29Cims.DWG	Revised:
Layout: 500plot	
Project:	