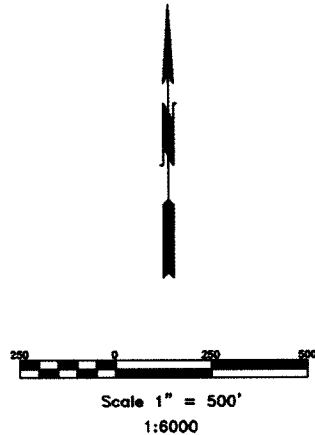
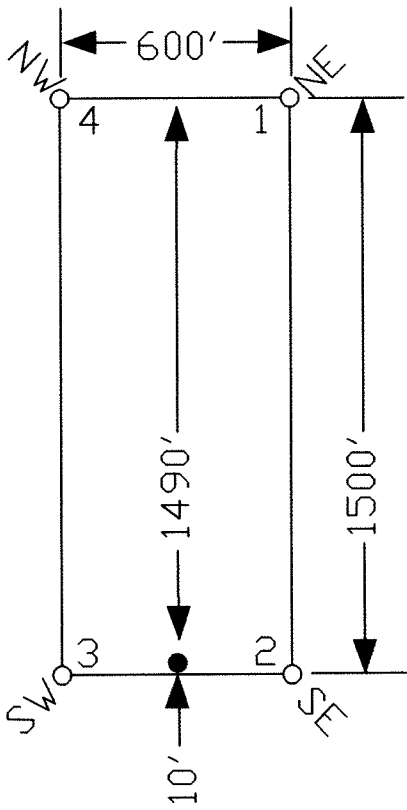
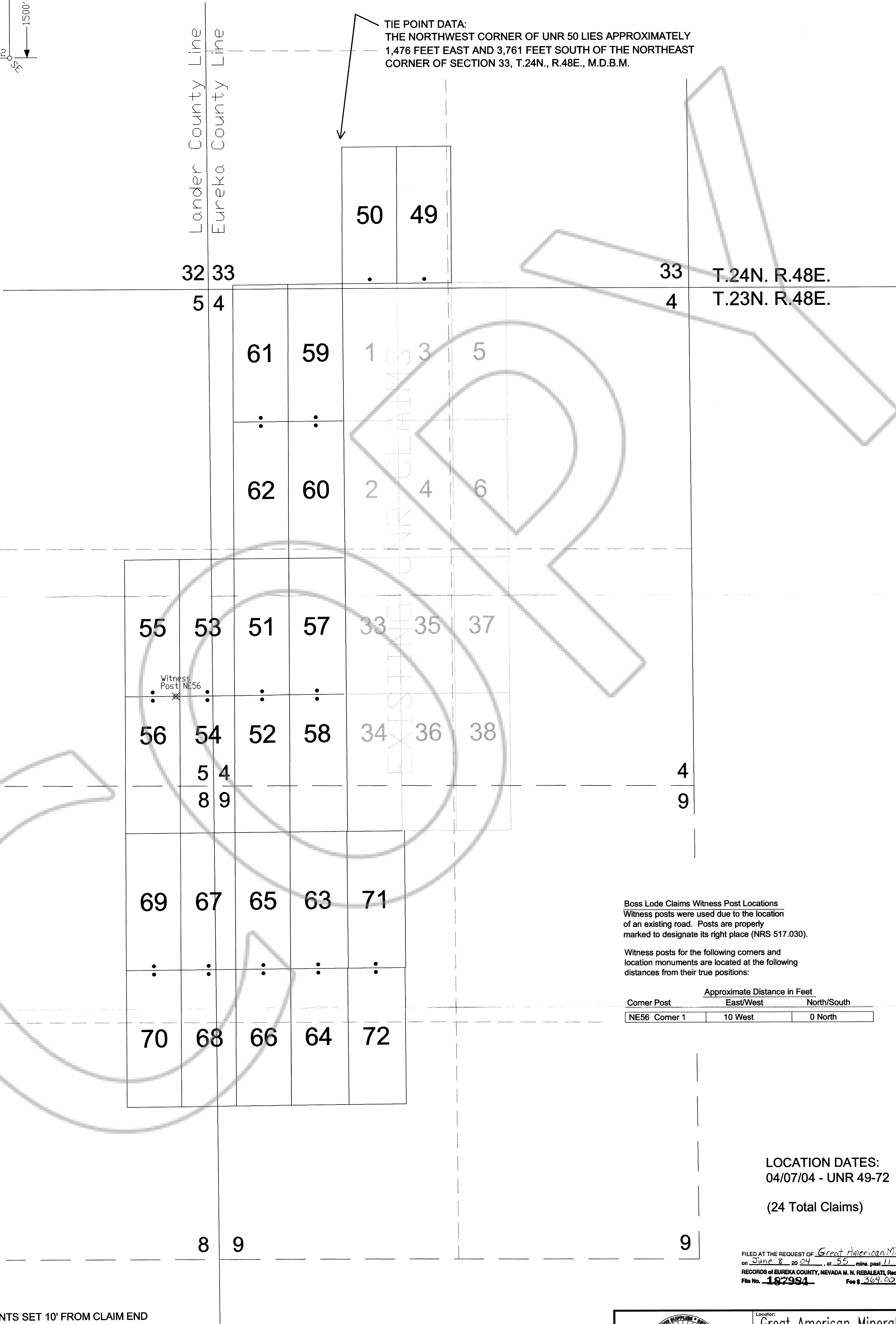


TYPICAL CLAIM



TIE POINT DATA:
THE NORTHWEST CORNER OF UNR 50 LIES APPROXIMATELY
1,476 FEET EAST AND 3,761 FEET SOUTH OF THE NORTHEAST
CORNER OF SECTION 33, T.24N., R.48E., M.D.B.M.



Boss Lode Claims Witness Post Locations
Witness posts were used due to the location
of an existing road. Posts are properly
marked to designate its right place (NRS 517.030).

Witness posts for the following corners and
location monuments are located at the following
distances from their true positions:

Corner Post	Approximate Distance in Feet	
	East/West	North/South
NE56 Corner 1	10 West	0 North


LOCATION DATES:
04/07/04 - UNR 49-72

(24 Total Claims)

NOTES:
LOCATION MONUMENTS SET 10' FROM CLAIM END
CENTERLINES. ALL LOCATION MONUMENTS AND CLAIM
POSTS ARE 2"x2"x4' WOODEN STAKES.

DASHED SECTION LINES INDICATE PROJECTED SECTIONS.

FILED AT THE REQUEST OF Great American Minerals
on June 8 2004, at 55 mins. past 11 A.M.
RECORDS OF EUREKA COUNTY, NEVADA M. N. REBALEATI, Recorder
File No. 187984 Fee \$ 364.00



369 - 5th STREET
PH: (775) 778-0668 ELKO, NV 89801 FAX: (775) 778-0687

Locator:
Great American Minerals, Inc.
9051 S. 1075 W., Ste B-301, West Jordan, UT 84088
UNR Lode Claims 49-72
T.23,24N.,R.48E.; Eureka & Lander County, NV

DATE: April 2004	ACAD FILE NAME: (blank not used) 187984.dwg PLOT SCALE: 1"=500'	DRAWN BY: JMT
---------------------	--	------------------