

TIE POINT DATA:
 THE NORTHWEST CORNER OF PHOENIX 694 LIES APPROXIMATELY
 2,985 FEET WEST AND 623 FEET NORTH OF THE NORTHEAST
 CORNER OF SECTION 34, T.27N., R.52E., M.D.B.M.

27

26

718	717	722	669
694	693	683	670
696	695	684	671
698	LM Offset 20 FL. 697	685	672
700	699	686	673
702	701	687	674
34 704	703	688	35 676
706	705	689	713 677
708	707	690	678
710	709	691	714 679
712	711	692	680
			681
			682

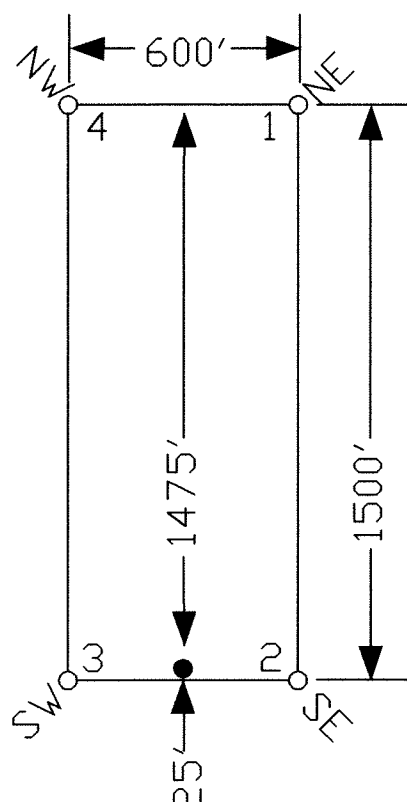
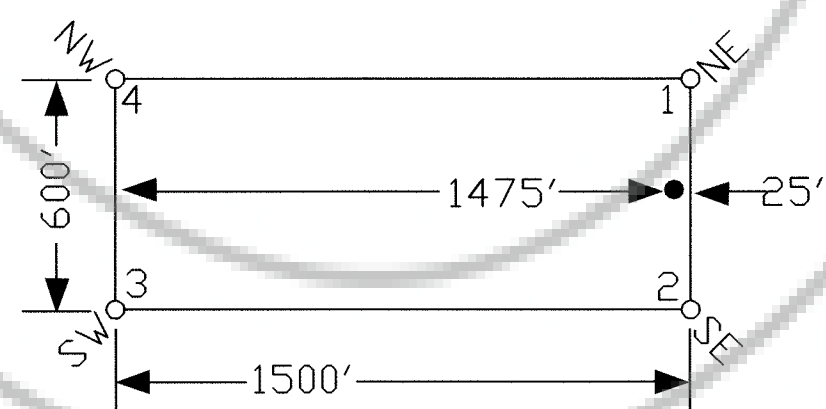
EXISTING PHOENIX CLAIMS

T.27N., R.52E.
 T.26N., R. 52E.

3

2

TYPICAL CLAIMS



LOCATION DATES:
 March 20, 2004 - Phoenix 683 - 714
 (32 Total Claims)

NOTES:
 LOCATION MONUMENTS SET 25' FROM CLAIM END
 CENTERLINES UNLESS NOTED ON MAP. ALL LOCATION
 MONUMENTS AND CLAIM POSTS ARE 2"x2"x4' WOODEN STAKES.

FILED AT THE REQUEST OF *Golden Gryphon*
 on *June 15, 2004*, at *3:39* mins, *pm*, *4 p.m.*
 RECORDS OF EUREKA COUNTY, NEVADA M. N. REBALEATI, Recorder
 File No. **188054** Fee \$ *484.00*

	Locator: Golden Gryphon USA Inc. 1400 Tanager Place RR21, Roberts Creek, BC V0N 2W1 Phoenix 683-714 Lode Claims T.26,27N., R.52E.; Eureka County, Nevada		
	DATE: June 2004	ACAD FILE NAME: (client\gryphon\188054.dwg)	DRAWN BY: STMS
369 - 5th STREET PH: (775) 778-0668 ELKO, NV 89801 FAX: (775) 778-0687		PLOT SCALE: 1"=500'	