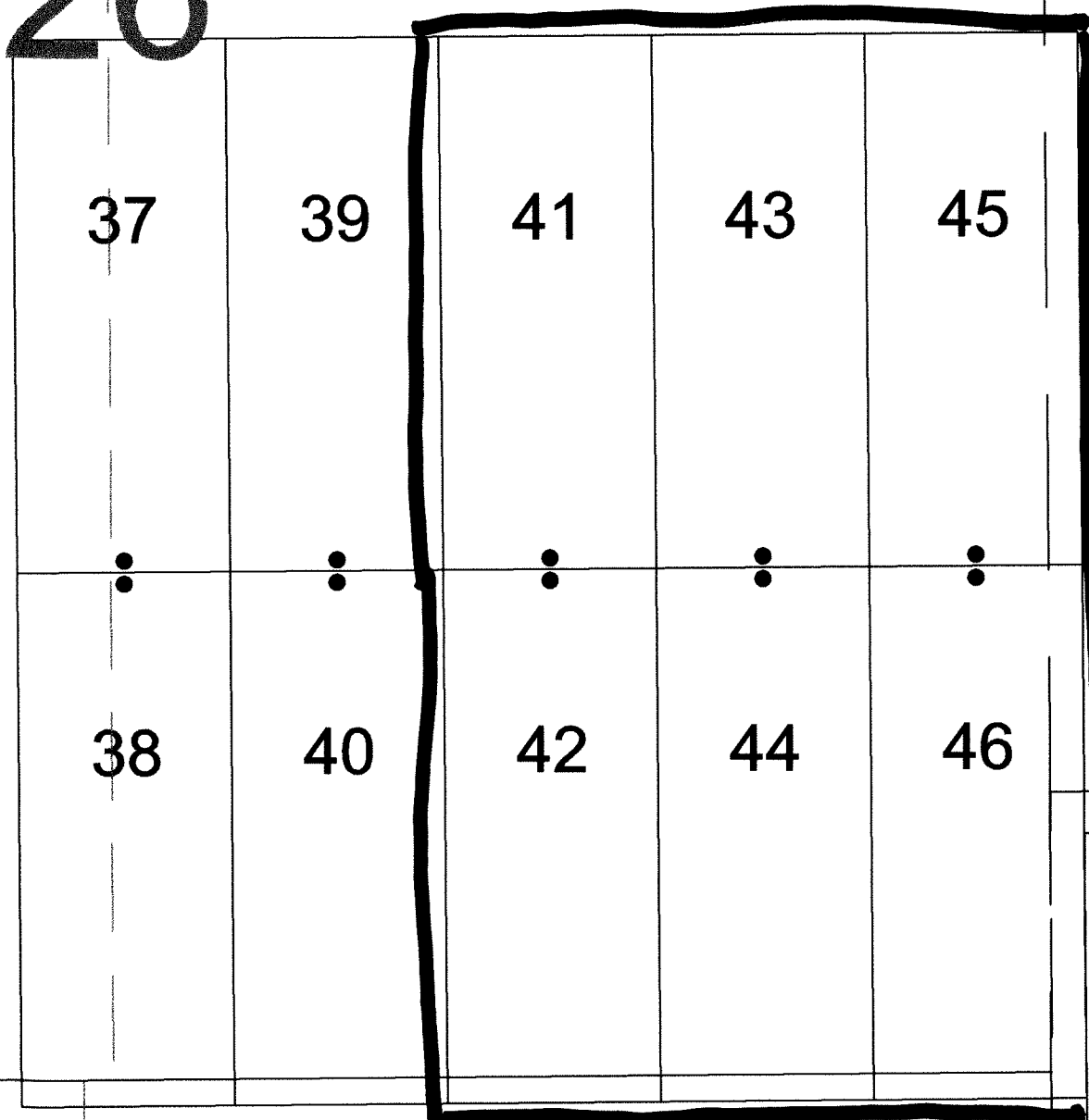


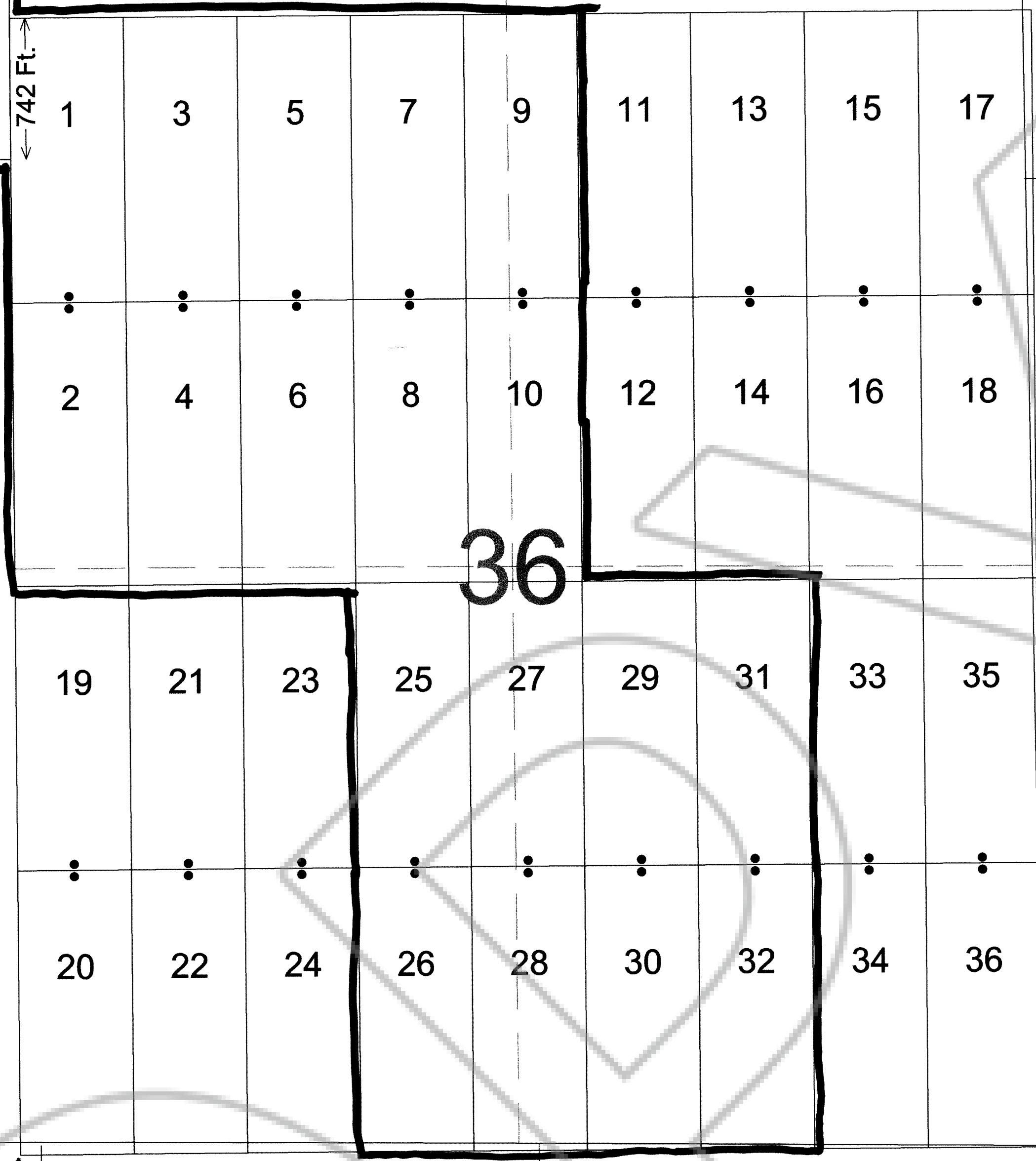
26

25

32

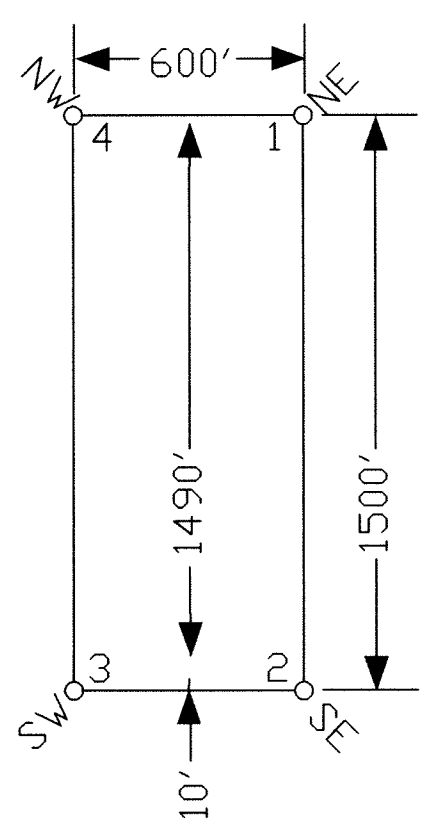


R.50E.
R.51E.



T.33N.
T.32N.

TYPICAL CLAIM



35

36

5

T.33N.
T.32N.

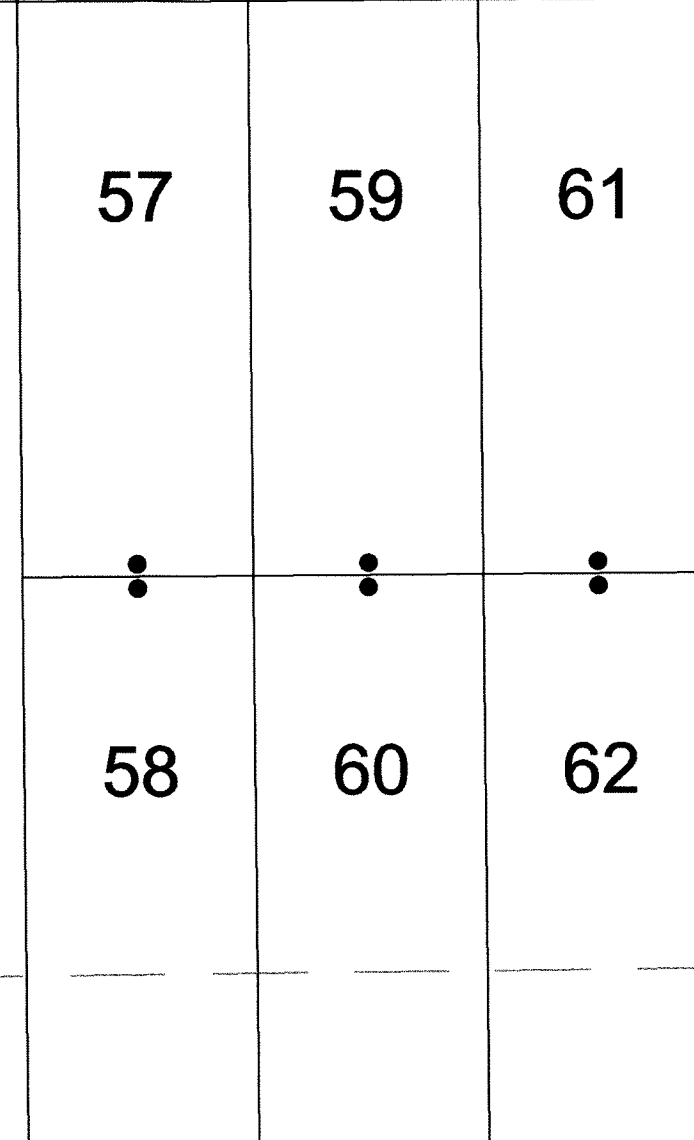
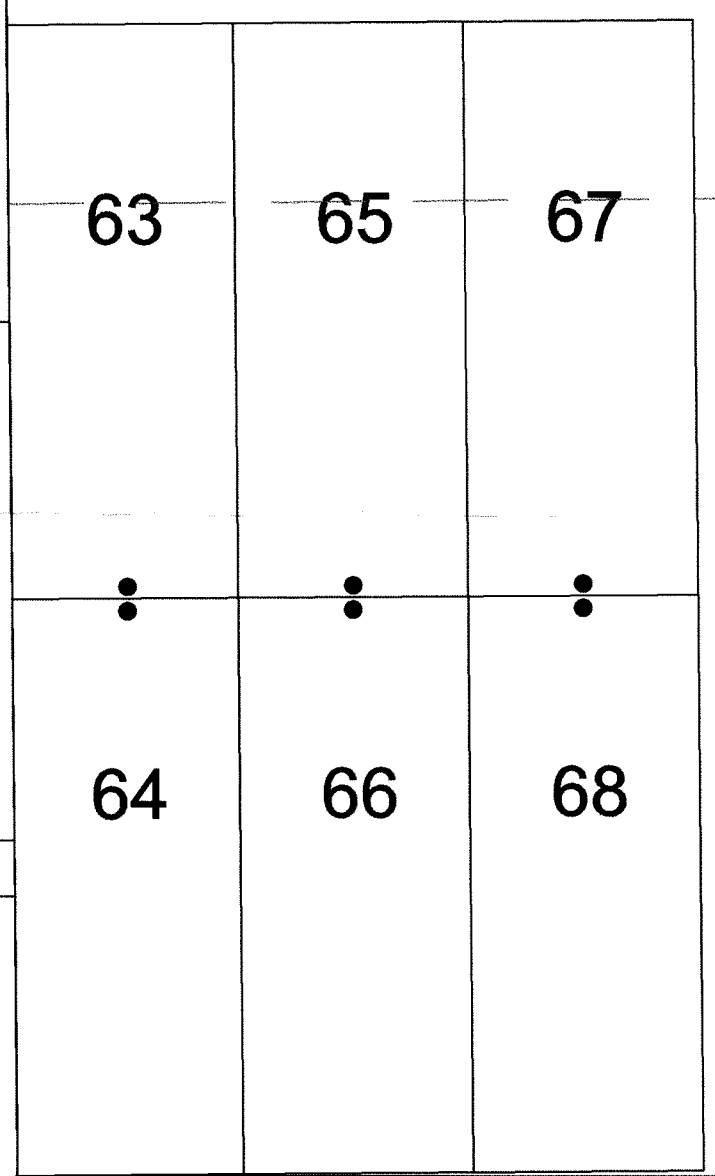
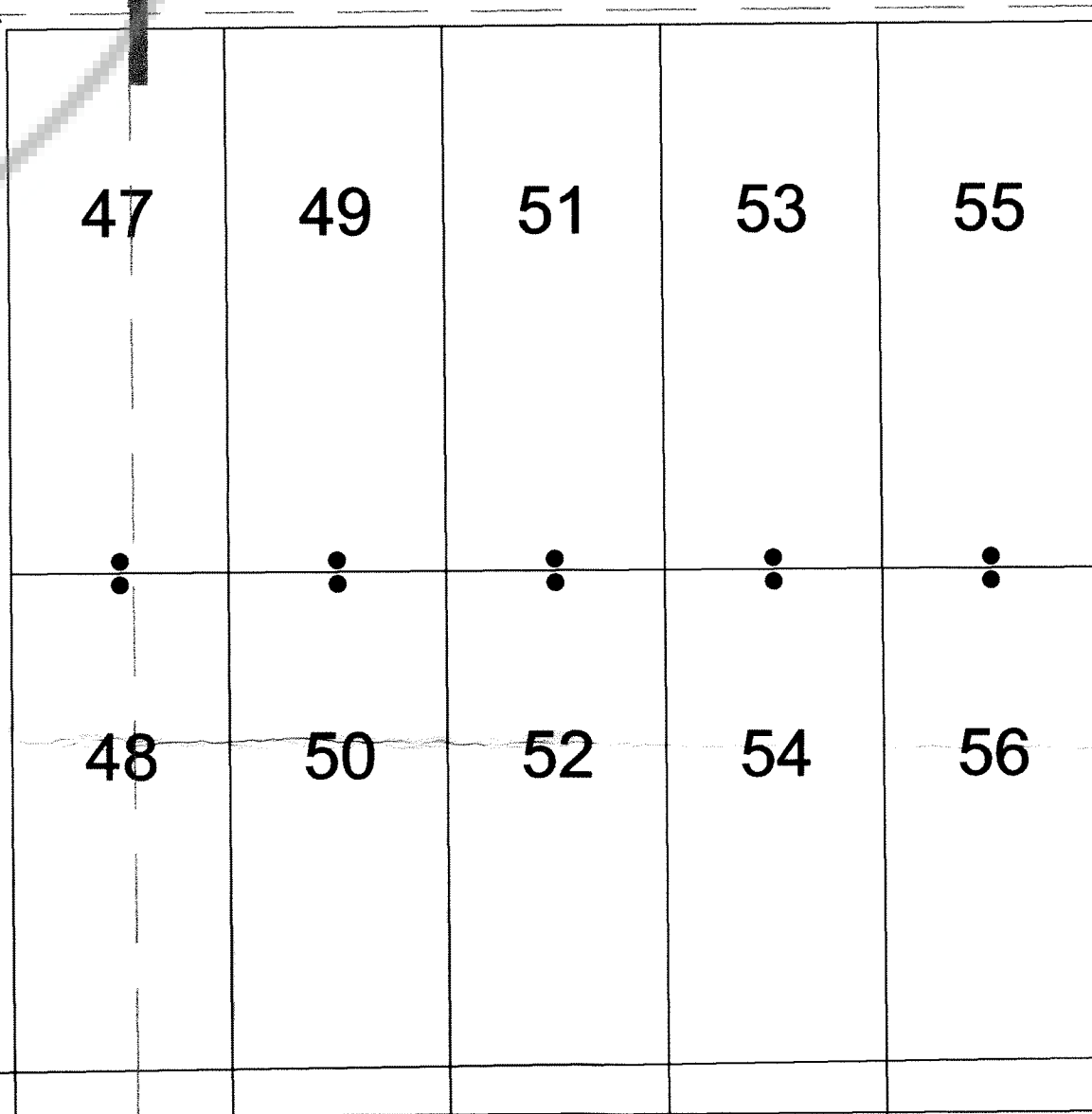
TIE POINT DATA:
THE SOUTHWEST CORNER OF EP 20 LIES APPROXIMATELY
5,350 FEET WEST AND 52 FEET SOUTH OF THE NORTHEAST
CORNER OF SECTION 1, T.32N., R.50E., M.D.B.M.

TIE POINT DATA:
THE NORTHWEST CORNER OF EP 47 LIES APPROXIMATELY
2,917 FEET WEST AND 2,857 SOUTH OF THE NORTHEAST
CORNER OF SECTION 1, T.32N., R.50E., M.D.B.M.

2

1

8



12

LOCATION DATES:
March 31, 2004 - EP 1-18,37-68
April 16, 2004 - EP 19-36
(68 total Claims)

NOTES:
LOCATION MONUMENTS SET 10' FROM CLAIM END
CENTERLINES. ALL LOCATION MONUMENTS AND CLAIM
POSTS ARE 2"x2"x4' WOODEN STAKES.

DASHED SECTION LINES INDICATE PROJECTED SECTIONS.

369 - 5th STREET
PH: (775) 778-0668 ELKO, NV 89801 FAX: (775) 778-0667

Great American Minerals, Inc.
9051 S. 1075 W., Ste B-301, West Jordan, UT 84088
EP 1-68 Lode Claims
T.32&33N., R.50&51E.; Eureka County, Nevada

DATE: June 2004
ACAD FILE NAME: dcmh\mcd\ep_01m.dwg
PLOT SCALE: 1"=500'

DRAWN BY: smm

FILED AT THE REQUEST OF *Great American Minerals*
on *June 28*, 2004, at *18* mins. past *5 P.* M.
RECORDS OF EUREKA COUNTY, NEVADA M. N. REBALEATI, Recorder
File No. **188159** Fee \$ *364.00*