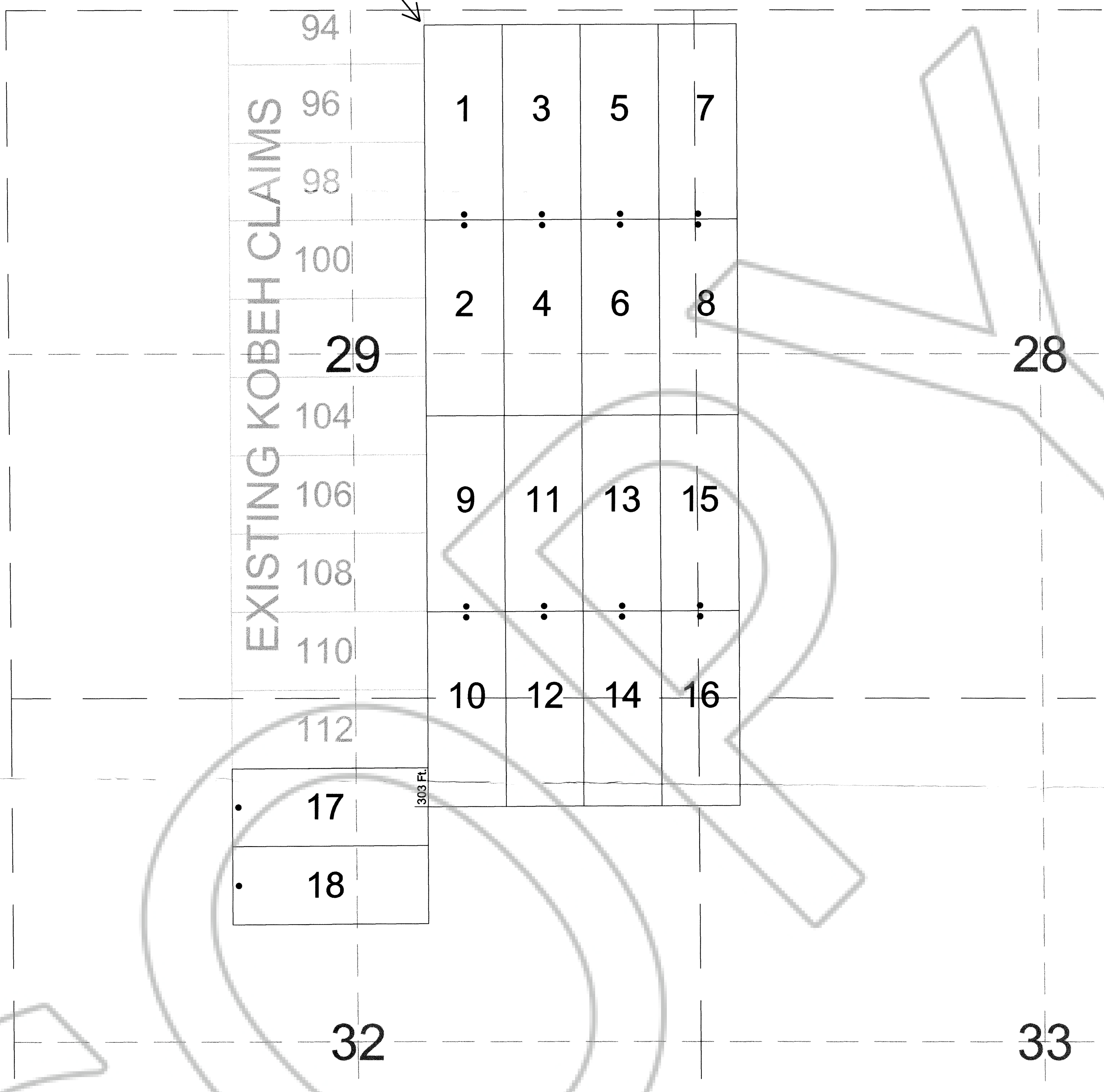
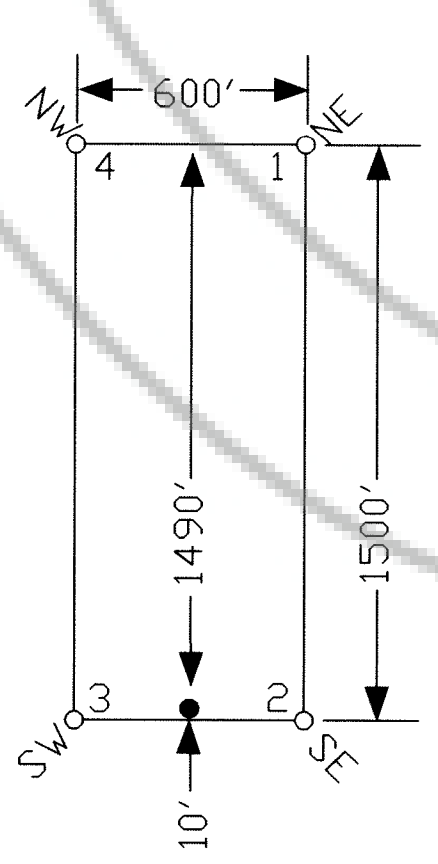


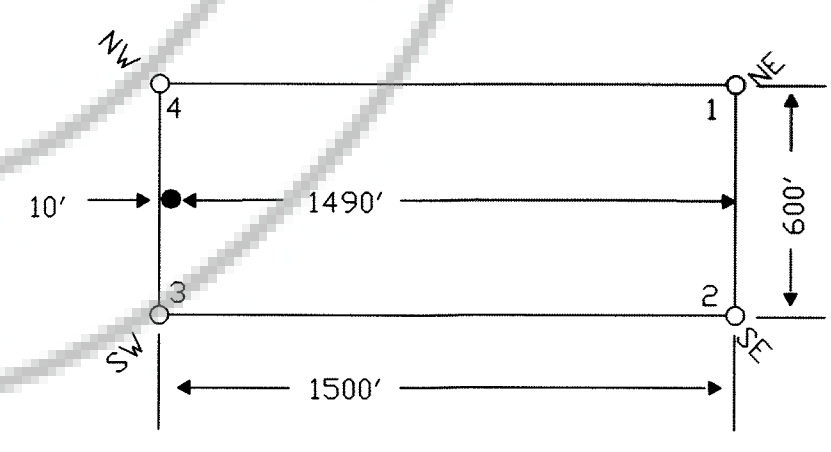
TIE POINT DATA:  
THE NORTHWEST CORNER OF NR 1 LIES APPROXIMATELY  
9,860 FEET EAST AND 10,460 FEET NORTH OF THE SOUTHWEST  
CORNER OF SECTION 31, T.21N., R.52E., M.D.B.M.



TYPICAL CLAIM



TYPICAL CLAIM



LOCATION DATES:  
April 8, 2004 - NR 1-18

NOTES:  
LOCATION MONUMENTS SET 10' FROM CLAIM END  
CENTERLINES. ALL LOCATION MONUMENTS AND CLAIM  
POSTS ARE 2"x2"x4' WOODEN STAKES.

DASHED SECTION LINES INDICATE PROJECTED SECTIONS.

FILED AT THE REQUEST OF *Great American Minerals, Inc.*  
on *July 14 20 04* at *2* mins. past *1 P.M.*  
RECORDS OF EUREKA COUNTY, NEVADA M. N. REBALEATI, Recorder  
File No. **188251** Fee \$ *274.00*

Locator:  
Great American Minerals, Inc.  
9051 S. 1075 W., Ste B-301, West Jordan, UT 84088  
NR 1-18 Lode Claims  
T.21N., R.52E.; Eureka County, Nevada

DATE: June 2004  
ACAD FILE NAME: *Carroll Trend*  
DRAWN BY: *arms*