

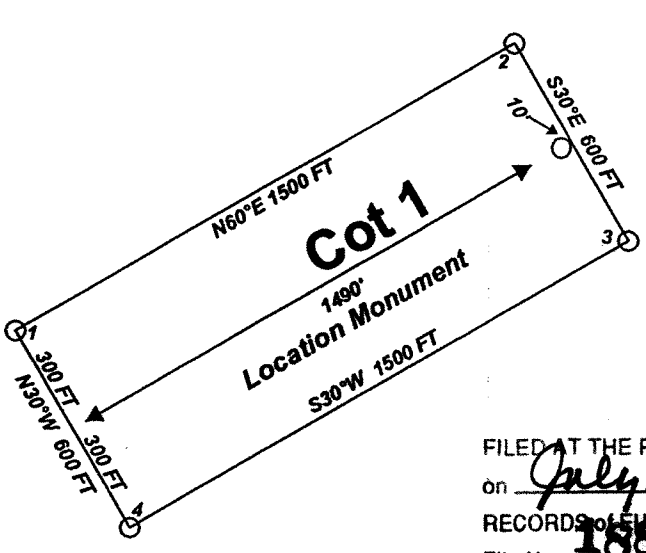
"Cot" lode claims 23-52 and 79-92 were located on April 25, 2004 and  
"Cot" lode claims 1-22 and 53-78 and 121 were located on April 26, 2004 and  
"Cot" lode claims 93-120 were located on April 27, 2004  
in Sections 1, 2, 11, and 12  
Township 22 North  
Range 49 East  
and in Sections 6 and 7  
Township 22 North  
Range 50 East  
and in Sections 26, 35 and 36  
Township 23 North  
Range 49 East  
and in Sections 31  
Township 23 North  
Range 50 East  
Eureka County, Nevada

Locator:  
White Knight (U.S.) Inc.  
121 Woodland Ave Suite 140  
Reno Nv. 89523

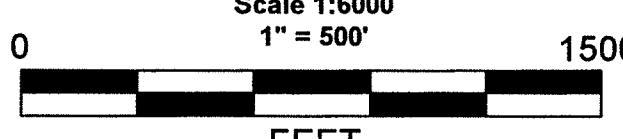
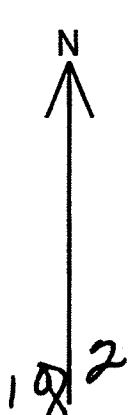
Notes:  
Location Monuments are set 10' from claim end lines unless noted otherwise. All location and corner monuments are 2" X 2" X 4' wooden posts with scribed metal tags. All claims are 600' by 1500' unless noted otherwise.

Claim Location Map for Cot 1-121  
Map 1 of 2

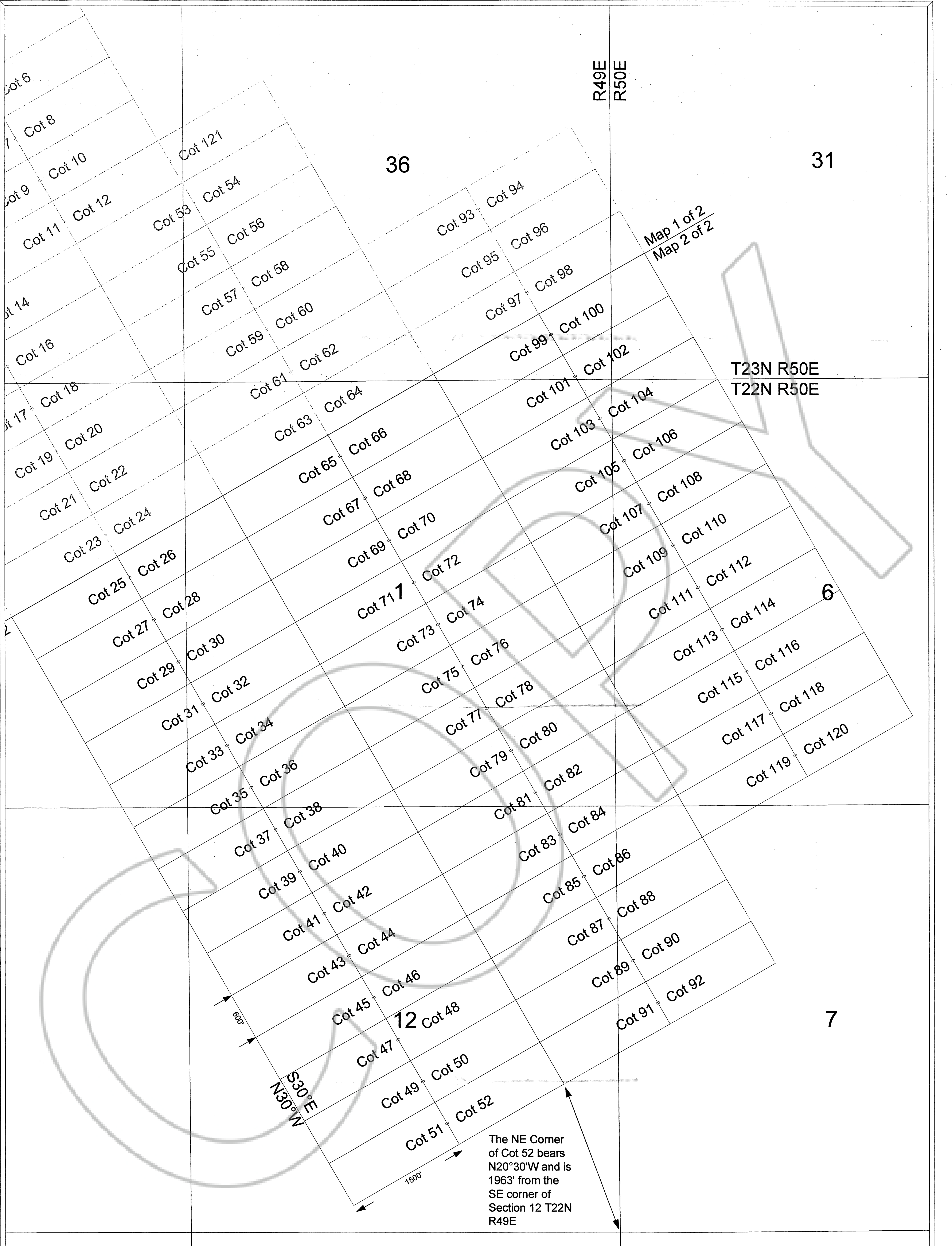
Typical Claim



FILED AT THE REQUEST OF *White Knight (us)*  
on *July 1, 2004* at *3:28* mins past *1 P*.M.  
RECORDED IN EUREKA COUNTY, NEVADA M. N. REBAL, Recorder  
File No. *183382* Fee \$ *1819.00*



MINING CLAIM LOCATION MAP Cot 1 - 121 Lode Mining Claims White Knight (U.S.) Inc. 121 Woodland Ave Suite 140 Reno Nv. 89523 Cot_ClaimMap.dwg June 14, 2004 Drawn By: G.I.S. Land Services Surveyed By: T&T Exploration L.L.C. Datum: 1927 Projection: UTM Zone 11 Units: Feet
--



"Cot" lode claims 23-52 and 79-92 were located on April 25, 2004 and  
"Cot" lode claims 1-22 and 53-78 and 121 were located on April 26, 2004 and  
"Cot" lode claims 93-120 were located on April 27, 2004  
in Sections 1, 2, 11, and 12  
Township 22 North  
Range 49 East  
and in Sections 6 and 7  
Township 22 North  
Range 50 East  
and in Sections 26, 35 and 36  
Township 23 North  
Range 49 East  
and in Sections 31  
Township 23 North  
Range 50 East  
Eureka County, Nevada

Locator:  
White Knight (U.S.) Inc.  
121 Woodland Ave Suite 140  
Reno Nv. 89523

**Claim Location Map for Cot 1-121**  
**Map 2 of 2**

Notes:  
Location Monuments are set 10' from claim end lines unless noted otherwise. All location and corner monuments are 2" X 2" X 4' wooden posts with scribed metal tags. All claims are 600' by 1500' unless noted otherwise.

Typical Claim

FILED AT THE REQUEST OF *White Knight (U.S.)*  
on *July 21, 2004* at *10:38* a.m. by *IP*  
RECORDS OF EUREKA COUNTY, NEVADA M. N. REBALEATI, Recorder  
File No. **188382** Fee \$ *282*

Scale 1:6000  
1" = 500'

MINING CLAIM LOCATION MAP  
Cot 1 - 121  
Lode Mining Claims  
White Knight (U.S.) Inc.  
121 Woodland Ave Suite 140  
Reno Nv. 89523  
Cot\_ClaimMap.dwg  
June 14, 2004  
Drawn By: G.I.S. Land Services  
Surveyed By: T&T Exploration L.L.C.  
Datum: 1927 Projection: UTM Zone 11  
Units: Feet