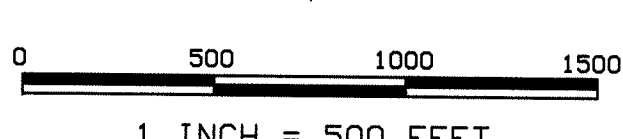
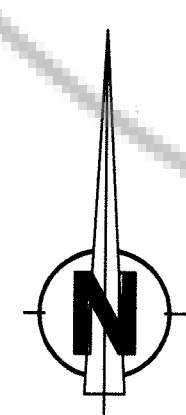
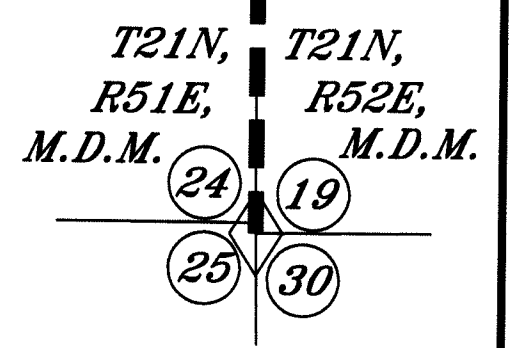
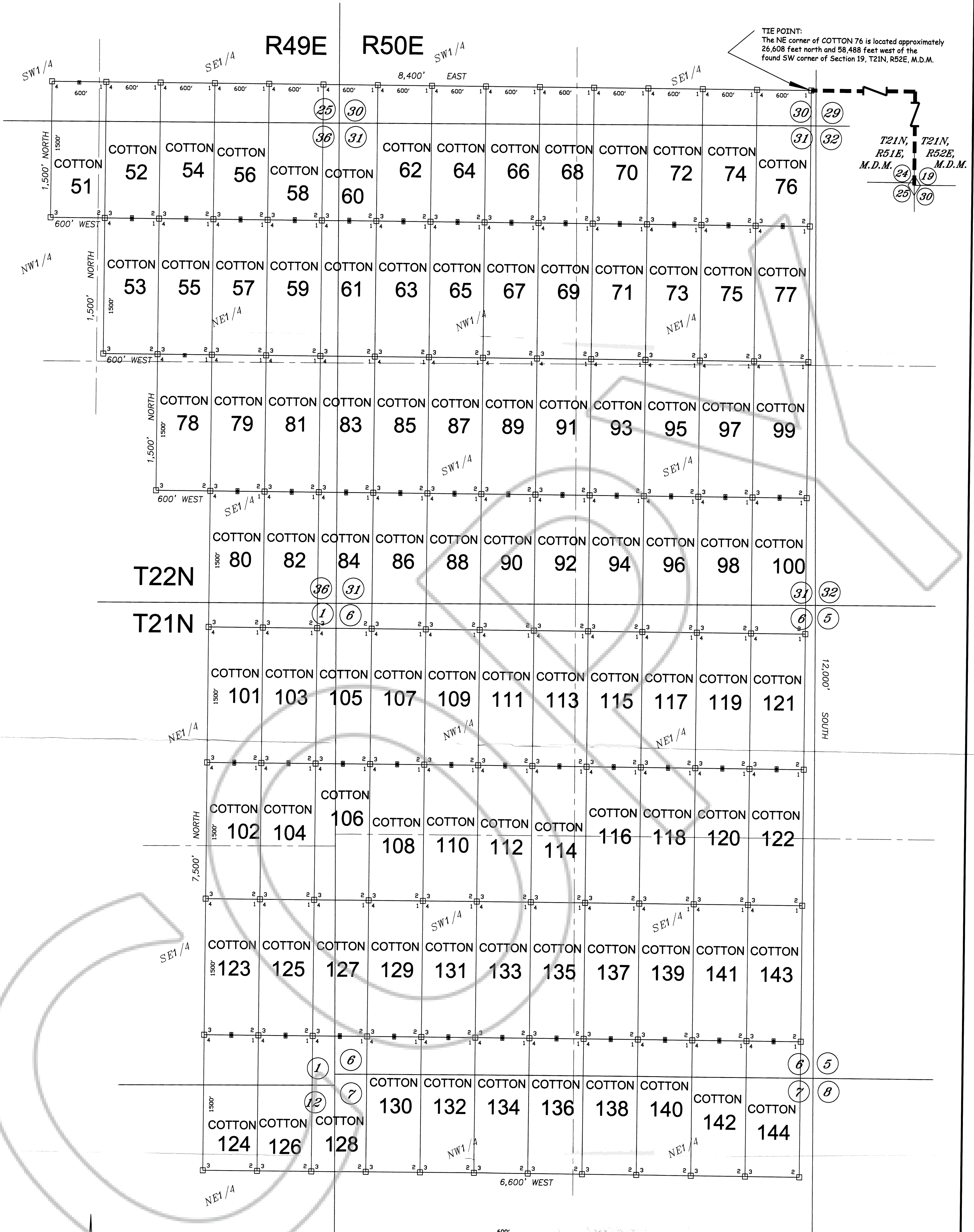


R49E R50E

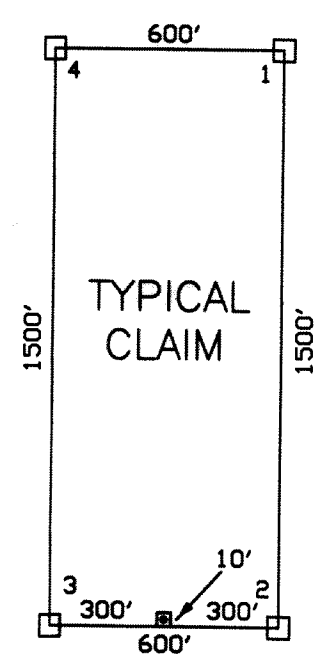
TIE POINT:  
The NE corner of COTTON 76 is located approximately  
26,608 feet north and 58,488 feet west of the  
found SW corner of Section 19, T21N, R52E, M.D.M.



**OWNER**  
NEWMONT USA LIMITED, d/b/a  
NEWMONT MINING CORPORATION  
P.O. Box 669  
Carlin, Nevada 89822

- LEGEND:**
- = 2" x 2" x 4' WOOD POST LOCATION MONUMENT
  - = 2" x 2" x 4' WOOD POST CLAIM CORNER
  - ◇ = FOUND SURVEY MONUMENT

**NOTES:**  
ALL LOCATION MONUMENTS AND CLAIM CORNERS ARE 2" x 2" x 4' WOOD.  
ALL CLAIMS ARE 1500' LONG BY 600' WIDE UNLESS OTHERWISE SHOWN.  
LOCATION MONUMENTS ARE SET ON THE CENTERLINE OF EACH CLAIM,  
10 FEET FROM THE NEAR ENDLINE AND 1490 FEET FROM THE OPPOSITE ENDLINE, UNLESS OTHERWISE SHOWN.



**TYPICAL LODGE CLAIM**  
UNLESS OTHERWISE SHOWN  
LOCATION MONUMENT MAY LIE AT EITHER END OF THE CLAIM

FILED AT THE REQUEST OF *Newmont Mining Corp*  
on *July 21 09* at *5:52* mins. past *03 PM*  
RECORDS OF EUREKA COUNTY, NEVADA M. N. REBALEATI, Recorder  
File No. *185846* Fee \$ *1414.00*

Claim Map of  
**COTTON 51 - 144**  
Lode Claims located within  
Sections 25 and 36, T22N, R49E, MDM  
Sections 30 and 31, T22N, R50E, MDM  
Sections 1 and 12, T21N, R49E, MDM  
Sections 6 and 7, T21N, R50E, MDM  
Eureka County, Nevada

**NEWMONT MINING CORPORATION**