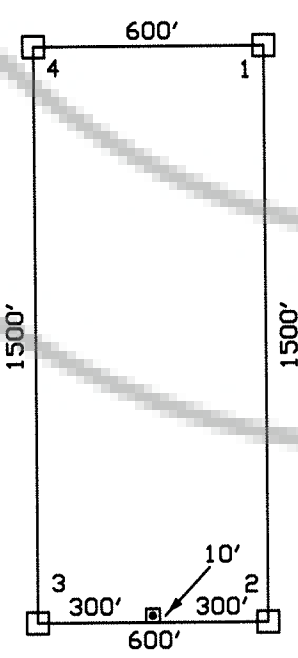


TIE POINT:
The SW corner of HAY 34 is located approximately 30,735 feet north and 20,068 feet west of the found SW corner of Section 19, T21N, R52E, M.D.M.



TYPICAL LODGE CLAIM
UNLESS OTHERWISE SHOWN
LOCATION MONUMENT MAY LIE AT EITHER END OF THE CLAIM

LEGEND:

- ☐ = 2" x 2" x 4" WOOD POST CLAIM CORNER
- = 2" x 2" x 4" WOOD POST LOCATION MONUMENT
- ◇ = FOUND SURVEY MONUMENT

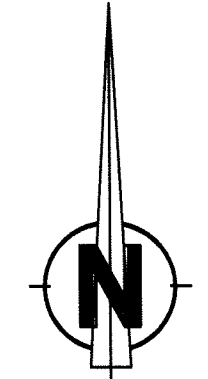
FILED AT THE REQUEST OF *Newmont Mining*
on *Aug 2 20 27* at *10* mins past *10* M.
RECORDS OF EUREKA COUNTY, NEVADA M. N. REBEAU, Recorder
File No. **190753** Fee \$ *13,440.00*

NOTES:

- ALL LOCATION MONUMENTS AND CLAIM CORNERS ARE 2" x 2" x 4" WOOD.
- ALL CLAIMS ARE 1500' LONG BY 600' WIDE UNLESS OTHERWISE SHOWN.
- LOCATION MONUMENTS ARE SET ON THE CENTERLINE OF EACH CLAIM, 10 FEET FROM THE NEAR ENDLINE AND 1490 FEET FROM THE OPPOSITE ENDLINE, UNLESS OTHERWISE SHOWN.
- AREA OF INTEREST CONTAINS SURVEYED, PARTIALLY SURVEYED, AND UNSURVEYED LANDS.

OWNER

NEWMONT USA LIMITED d/b/a
NEWMONT MINING CORPORATION
P.O. BOX 669
CARLIN, NEVADA 89822

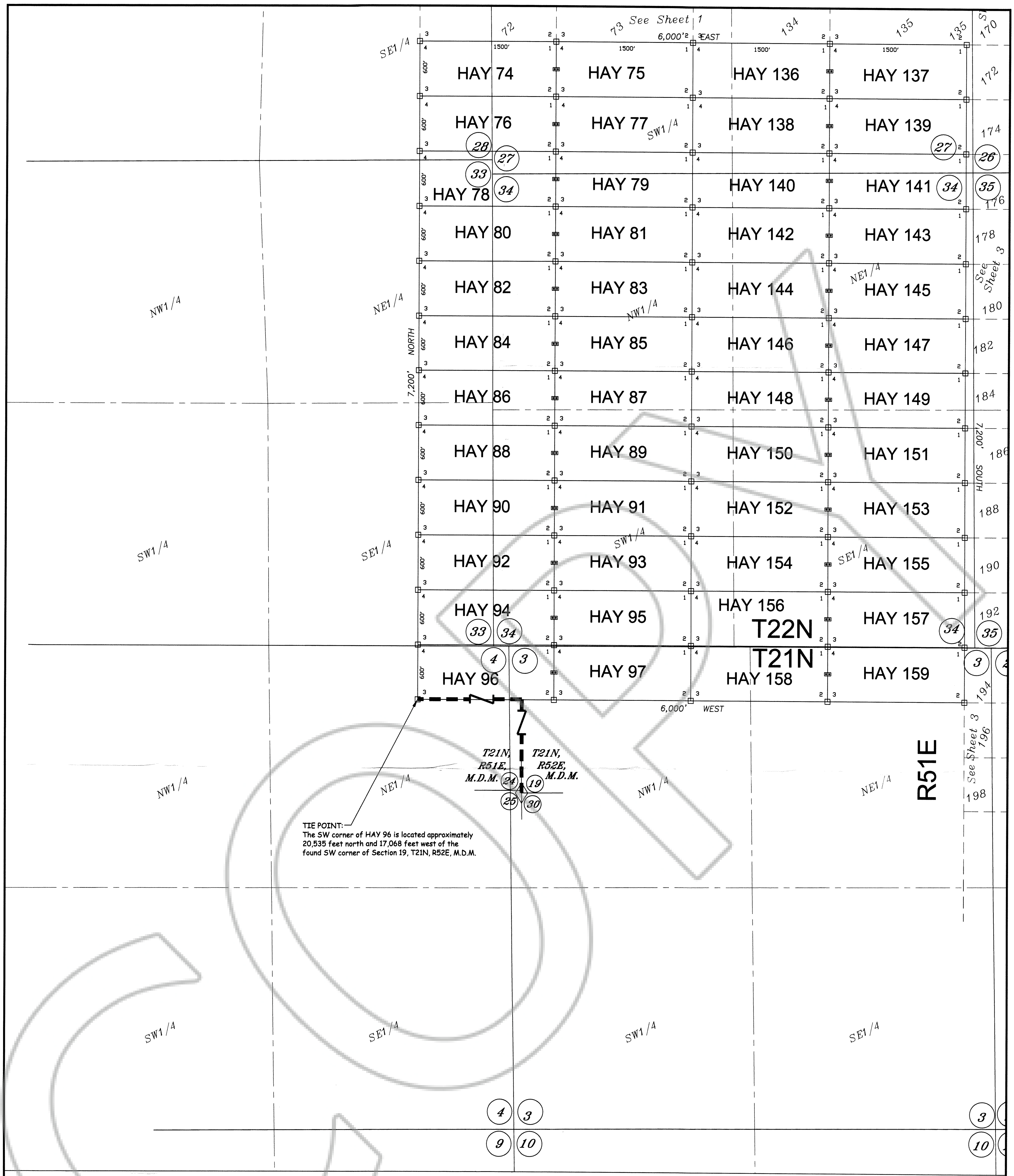


0 500 1000 1500
1 INCH = 500 FEET

SHEET 1 OF 10

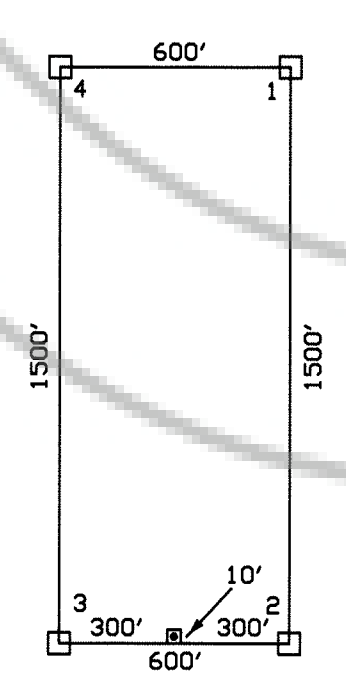
Claim Map of
HAY CLAIMS 1-521, 523-599, 602-667, 670-696, 698, 700-900
Lode Claims located within
Sections 14-17, 20-23, 25-28, 33-36 T22N, R51E MDM
Sections 1-4, 10-13, 24, 25, 36 T21N, R51E MDM
Sections 1, 2, 11-13 T20N, R51E MDM
Sections 7, 8, 17-20, 30-33 T21N, R52E MDM
Sections 4-9, 16-18 T20N, R52E MDM
Eureka County, Nevada

NEWMONT MINING CORPORATION



TIE POINT:
 The SW corner of HAY 96 is located approximately 20,535 feet north and 17,068 feet west of the found SW corner of Section 19, T21N, R52E, M.D.M.

T21N, R51E, M.D.M. 24
 T21N, R52E, M.D.M. 19



TYPICAL LOADE CLAIM
 UNLESS OTHERWISE SHOWN
 LOCATION MONUMENT MAY LIE AT EITHER END OF THE CLAIM

LEGEND:

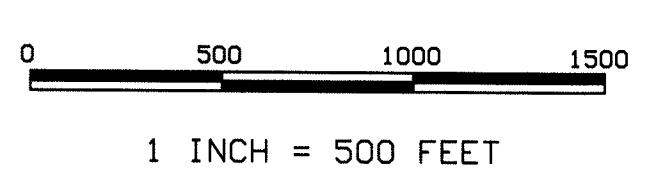
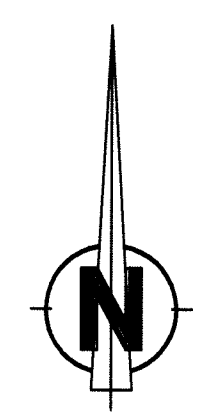
- = 2" x 2" x 4" WOOD POST CLAIM CORNER
- = 2" x 2" x 4" WOOD POST LOCATION MONUMENT
- ◇ = FOUND SURVEY MONUMENT

NOTES:

ALL LOCATION MONUMENTS AND CLAIM CORNERS ARE 2" x 2" x 4" WOOD.
 ALL CLAIMS ARE 1500' LONG BY 600' WIDE UNLESS OTHERWISE SHOWN.
 LOCATION MONUMENTS ARE SET ON THE CENTERLINE OF EACH CLAIM, 10 FEET FROM THE NEAR ENDLINE AND 1490 FEET FROM THE OPPOSITE ENDLINE, UNLESS OTHERWISE SHOWN.
 AREA OF INTEREST CONTAINS SURVEYED, PARTIALLY SURVEYED, AND UNSURVEYED LANDS.

OWNER

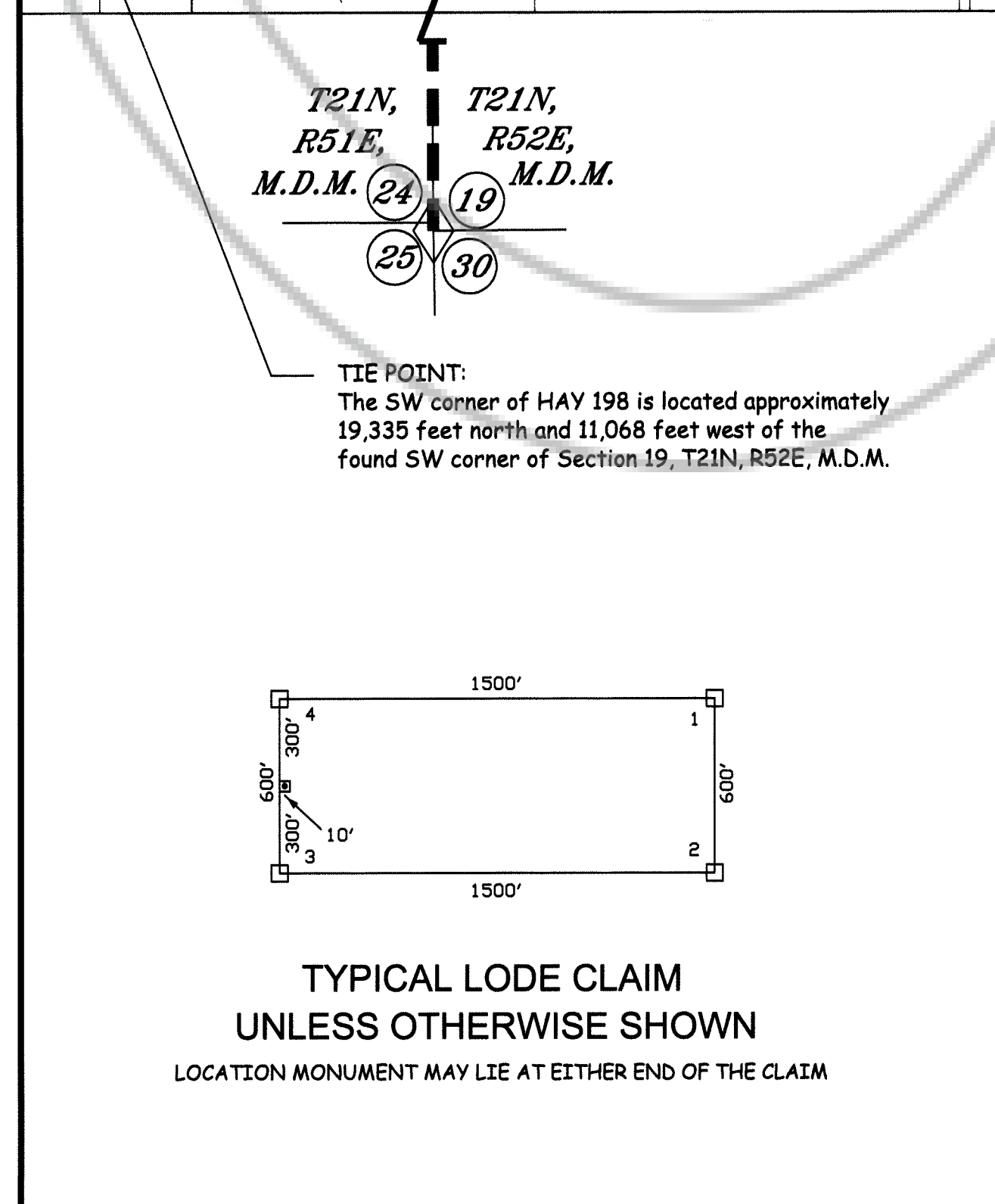
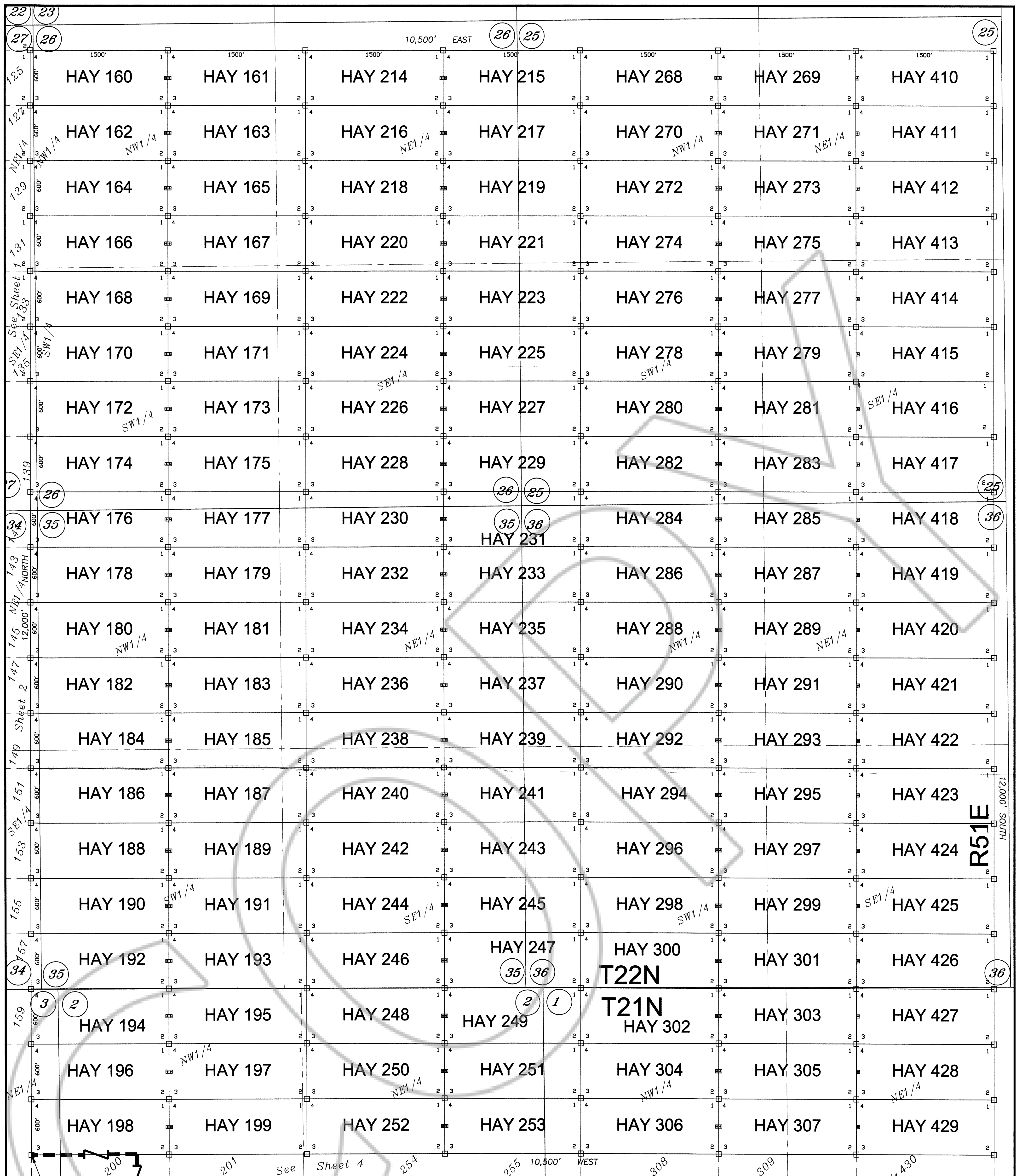
NEWMONT USA LIMITED d/b/a
 NEWMONT MINING CORPORATION
 P.O. BOX 669
 CARLIN, NEVADA 89822



SHEET 2 OF 10

Claim Map of
 HAY CLAIMS 1-521, 523-599, 602-667, 670-696, 698, 700-900
 Lode Claims located within
 Sections 14-17, 20-23, 25-28, 33-36 T22N, R51E MDM
 Sections 1-4, 10-13, 24, 25, 36 T21N, R51E MDM
 Sections 1, 2, 11-13 T20N, R51E MDM
 Sections 7, 8, 17-20, 30-33 T21N, R52E MDM
 Sections 4-9, 16-18 T20N, R52E MDM
 Eureka County, Nevada

NEWMONT MINING CORPORATION



LEGEND:

- ☐ = 2" x 2" x 4' WOOD POST CLAIM CORNER
- ☐ = 2" x 2" x 4' WOOD POST LOCATION MONUMENT
- ◇ = FOUND SURVEY MONUMENT

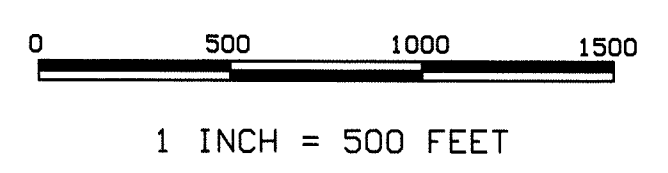
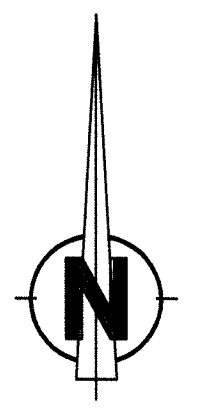
FILED AT THE REQUEST OF *Newmont Mining*
on *Aug 2 20 04* at *33* mins past *10* A.M.
RECORDS OF EUREKA COUNTY, NEVADA M. N. REBALEATI, Recorder
File No. **190753** Fee \$ *29.10*

NOTES:

- ALL LOCATION MONUMENTS AND CLAIM CORNERS ARE 2" x 2" x 4' WOOD.
- ALL CLAIMS ARE 1500' LONG BY 600' WIDE UNLESS OTHERWISE SHOWN.
- LOCATION MONUMENTS ARE SET ON THE CENTERLINE OF EACH CLAIM, 10 FEET FROM THE NEAR ENDLINE AND 1490 FEET FROM THE OPPOSITE ENDLINE, UNLESS OTHERWISE SHOWN.
- AREA OF INTEREST CONTAINS SURVEYED, PARTIALLY SURVEYED, AND UNSURVEYED LANDS.

OWNER

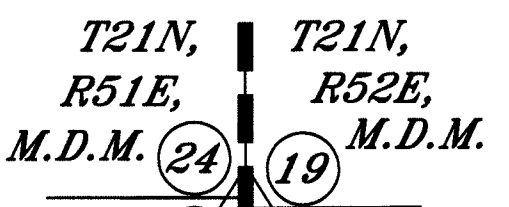
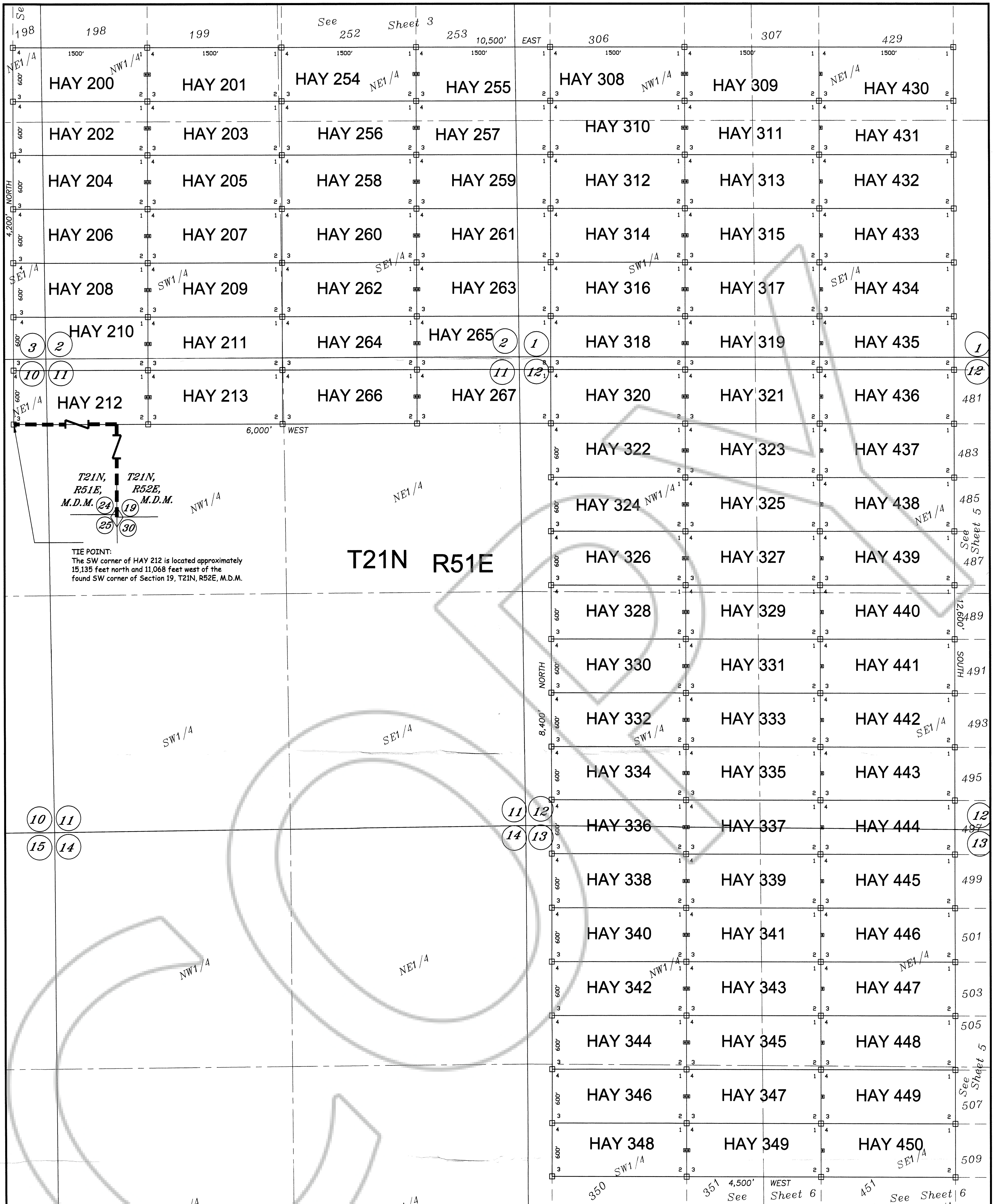
NEWMONT USA LIMITED d/b/a
NEWMONT MINING CORPORATION
P.O. BOX 669
CARLIN, NEVADA 89822



SHEET 3 OF 10

Claim Map of
HAY CLAIMS 1-521, 523-599, 602-667, 670-696, 698, 700-900
Lode Claims located within
Sections 14-17, 20-23, 25-28, 33-36 T22N, R51E MDM
Sections 1-4, 10-13, 24, 25, 36 T21N, R51E MDM
Sections 1, 2, 11-13 T20N, R51E MDM
Sections 7, 8, 17-20, 30-33 T21N, R52E MDM
Sections 4-9, 16-18 T20N, R52E MDM
Eureka County, Nevada

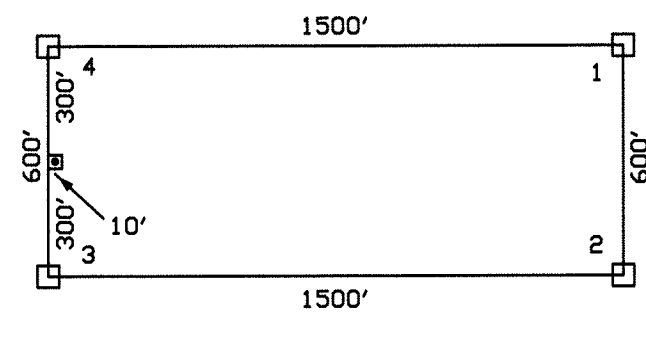
NEWMONT MINING CORPORATION



TIE POINT:
The SW corner of HAY 212 is located approximately 15,135 feet north and 11,068 feet west of the found SW corner of Section 19, T21N, R52E, M.D.M.



0 500 1000 1500
1 INCH = 500 FEET



TYPICAL LODGE CLAIM
UNLESS OTHERWISE SHOWN
LOCATION MONUMENT MAY LIE AT EITHER END OF THE CLAIM

LEGEND:

- = 2" x 2" x 4" WOOD POST CLAIM CORNER
- = 2" x 2" x 4" WOOD POST LOCATION MONUMENT
- ◇ = FOUND SURVEY MONUMENT

NOTES:

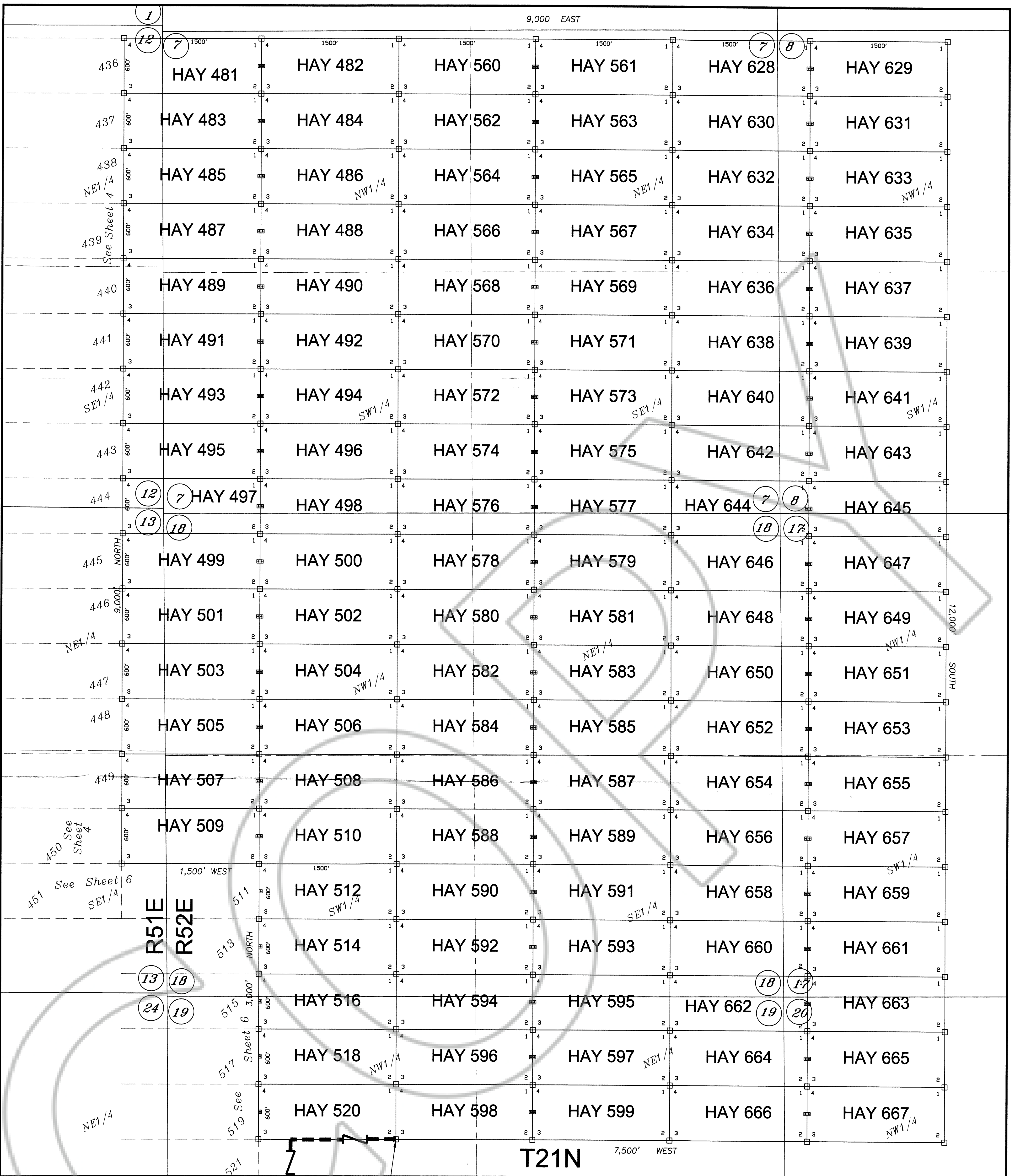
ALL LOCATION MONUMENTS AND CLAIM CORNERS ARE 2" x 2" x 4" WOOD.
ALL CLAIMS ARE 1500' LONG BY 600' WIDE UNLESS OTHERWISE SHOWN.
LOCATION MONUMENTS ARE SET ON THE CENTERLINE OF EACH CLAIM.
10 FEET FROM THE NEAR ENDLINE AND 1490 FEET FROM THE OPPOSITE ENDLINE, UNLESS OTHERWISE SHOWN.
AREA OF INTEREST CONTAINS SURVEYED, PARTIALLY SURVEYED, AND UNSURVEYED LANDS.

OWNER

NEWMONT USA LIMITED d/b/a
NEWMONT MINING CORPORATION
P.O. BOX 669
CARLIN, NEVADA 89822

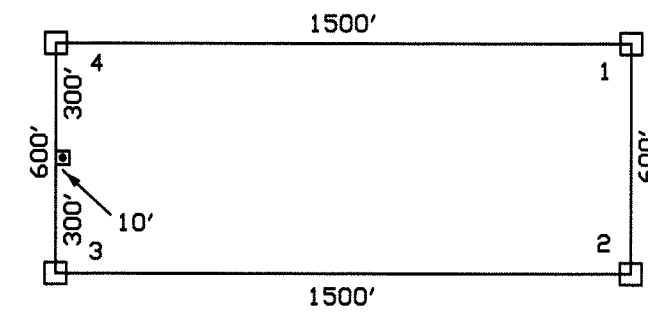
SHEET 4 OF 10

Claim Map of
HAY CLAIMS 1-521, 523-599, 602-667, 670-696, 698, 700-900
Lode Claims located within
Sections 14-17, 20-23, 25-28, 33-36 T22N, R51E MDM
Sections 1-4, 10-13, 24, 25, 36 T21N, R51E MDM
Sections 1, 2, 11-13 T20N, R51E MDM
Sections 7, 8, 17-20, 30-33 T21N, R52E MDM
Sections 4-9, 16-18 T20N, R52E MDM
Eureka County, Nevada
NEWMONT MINING CORPORATION



9,000 EAST

- LEGEND:**
- = 2" x 2" x 4" WOOD POST CLAIM CORNER
 - = 2" x 2" x 4" WOOD POST LOCATION MONUMENT
 - ◇ = FOUND SURVEY MONUMENT



TYPICAL LODGE CLAIM
UNLESS OTHERWISE SHOWN
LOCATION MONUMENT MAY LIE AT EITHER END OF THE CLAIM

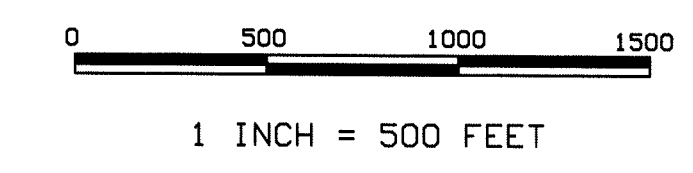
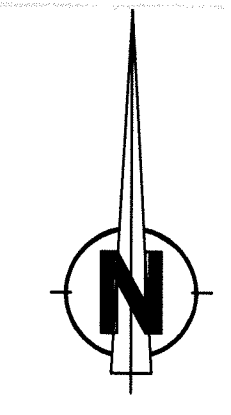
TIE POINT:
The SE corner of HAY 520 is located approximately 3,735 feet north and 2,432 feet east of the found SW corner of Section 19, T21N, R52E, M.D.M.

FILED AT THE REQUEST OF *Newmont Mining*
on *Aug 2* 20 *04*, at *3:37* mins. past *1:10*
RECORDS OF EUREKA COUNTY, NEVADA M. N. REBALEATI, Recorder
File No. **190753** Page No. *5 of 10*

- NOTES:**
- ALL LOCATION MONUMENTS AND CLAIM CORNERS ARE 2" x 2" x 4" WOOD.
 - ALL CLAIMS ARE 1500' LONG BY 600' WIDE UNLESS OTHERWISE SHOWN.
 - LOCATION MONUMENTS ARE SET ON THE CENTERLINE OF EACH CLAIM, 10 FEET FROM THE NEAR ENDLINE AND 1490 FEET FROM THE OPPOSITE ENDLINE, UNLESS OTHERWISE SHOWN.
 - AREA OF INTEREST CONTAINS SURVEYED, PARTIALLY SURVEYED, AND UNSURVEYED LANDS.

OWNER

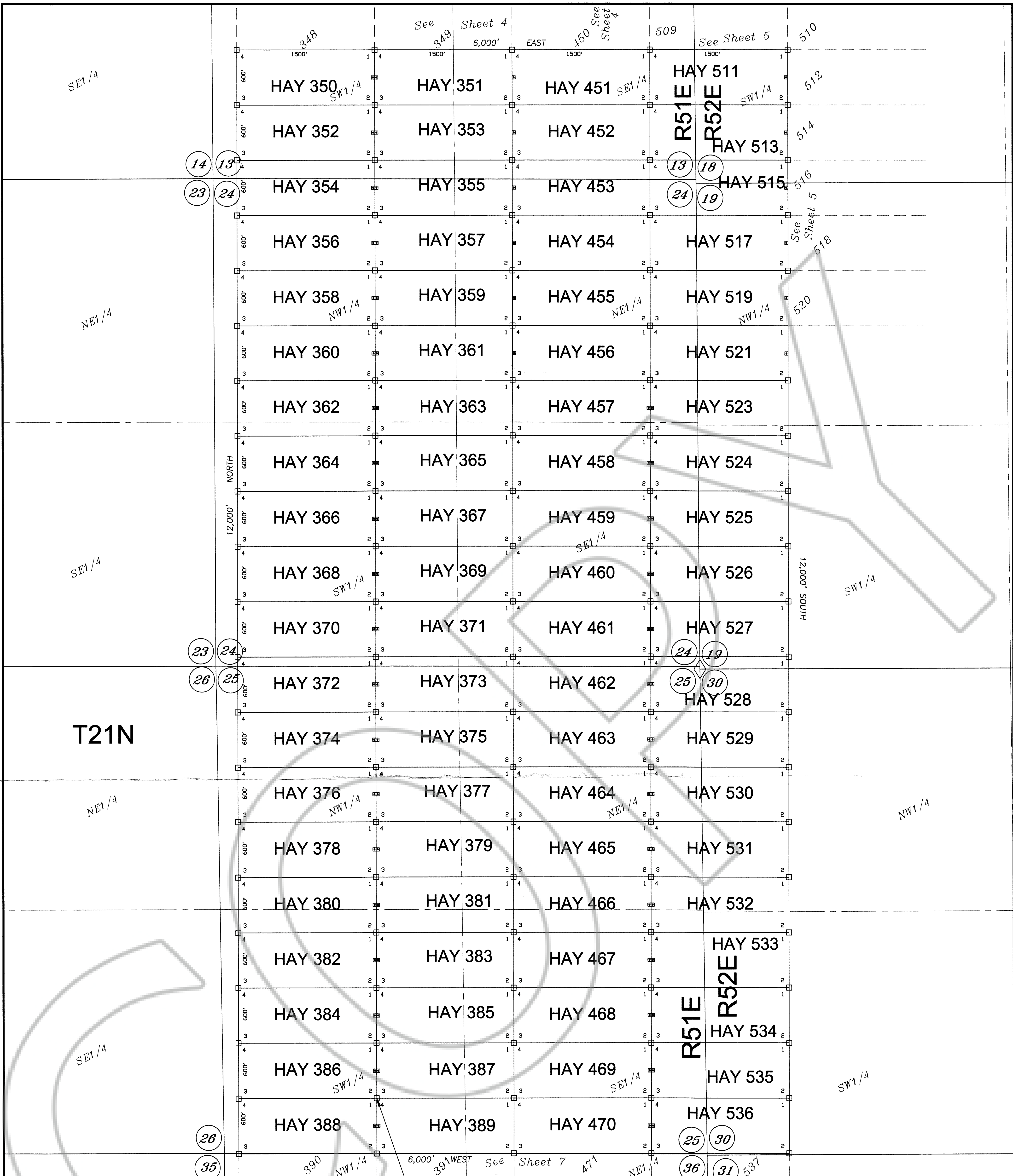
NEWMONT USA LIMITED d/b/a
NEWMONT MINING CORPORATION
P.O. BOX 669
CARLIN, NEVADA 89822



SHEET 5 OF 10

Claim Map of
HAY CLAIMS 1-521, 523-599, 602-667, 670-696, 698, 700-900
Lode Claims located within
Sections 14-17, 20-23, 25-28, 33-36 T22N, R51E MDM
Sections 1-4, 10-13, 24, 25, 36 T21N, R51E MDM
Sections 1, 2, 11-13 T20N, R51E MDM
Sections 7, 8, 17-20, 30-33 T21N, R52E MDM
Sections 4-9, 16-18 T20N, R52E MDM
Eureka County, Nevada

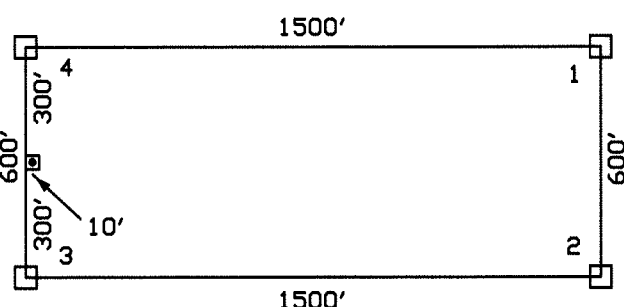
NEWMONT MINING CORPORATION



T21N

LEGEND:

- = 2" x 2" x 4' WOOD POST CLAIM CORNER
- = 2" x 2" x 4' WOOD POST LOCATION MONUMENT
- ◇ = FOUND SURVEY MONUMENT



TYPICAL LOADE CLAIM
UNLESS OTHERWISE SHOWN

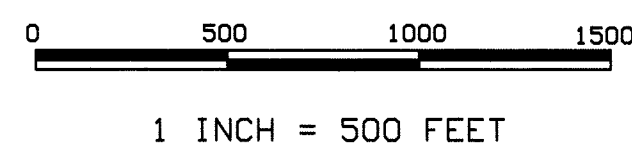
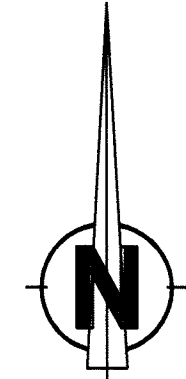
LOCATION MONUMENT MAY LIE AT EITHER END OF THE CLAIM

TIE POINT:
The SE corner of HAY 386 is located approximately 4,665 feet south and 3,568 feet west of the found SW corner of Section 19, T21N, R52E, M.D.M.

T21N, R51E, M.D.M. (24, 19)
T21N, R52E, M.D.M. (25, 30)

OWNER

NEWMONT USA LIMITED d/b/a
NEWMONT MINING CORPORATION
P.O. BOX 669
CARLIN, NEVADA 89822



SHEET 6 OF 10

FILED AT THE REQUEST OF *Newmont Mining*
on *Aug 2 20 04* at *3:32* mins. past *1:44*
RECORDS OF EUREKA COUNTY, NEVADA M. N. REBALEATI, Recorder
File No. **190753** Fee \$ *29.10*

NOTES:

ALL LOCATION MONUMENTS AND CLAIM CORNERS ARE 2" x 2" x 4' WOOD.

ALL CLAIMS ARE 1500' LONG BY 600' WIDE UNLESS OTHERWISE SHOWN.

LOCATION MONUMENTS ARE SET ON THE CENTERLINE OF EACH CLAIM,
10 FEET FROM THE NEAR ENDLINE AND 1490 FEET FROM THE OPPOSITE ENDLINE, UNLESS OTHERWISE SHOWN.

AREA OF INTEREST CONTAINS SURVEYED, PARTIALLY SURVEYED, AND UNSURVEYED LANDS.

Claim Map of

HAY CLAIMS 1-521, 523-599, 602-667, 670-696, 698, 700-900

Lode Claims located within

Sections 14-17, 20-23, 25-28, 33-36 T22N, R51E MDM

Sections 1-4, 10-13, 24, 25, 36 T21N, R51E MDM

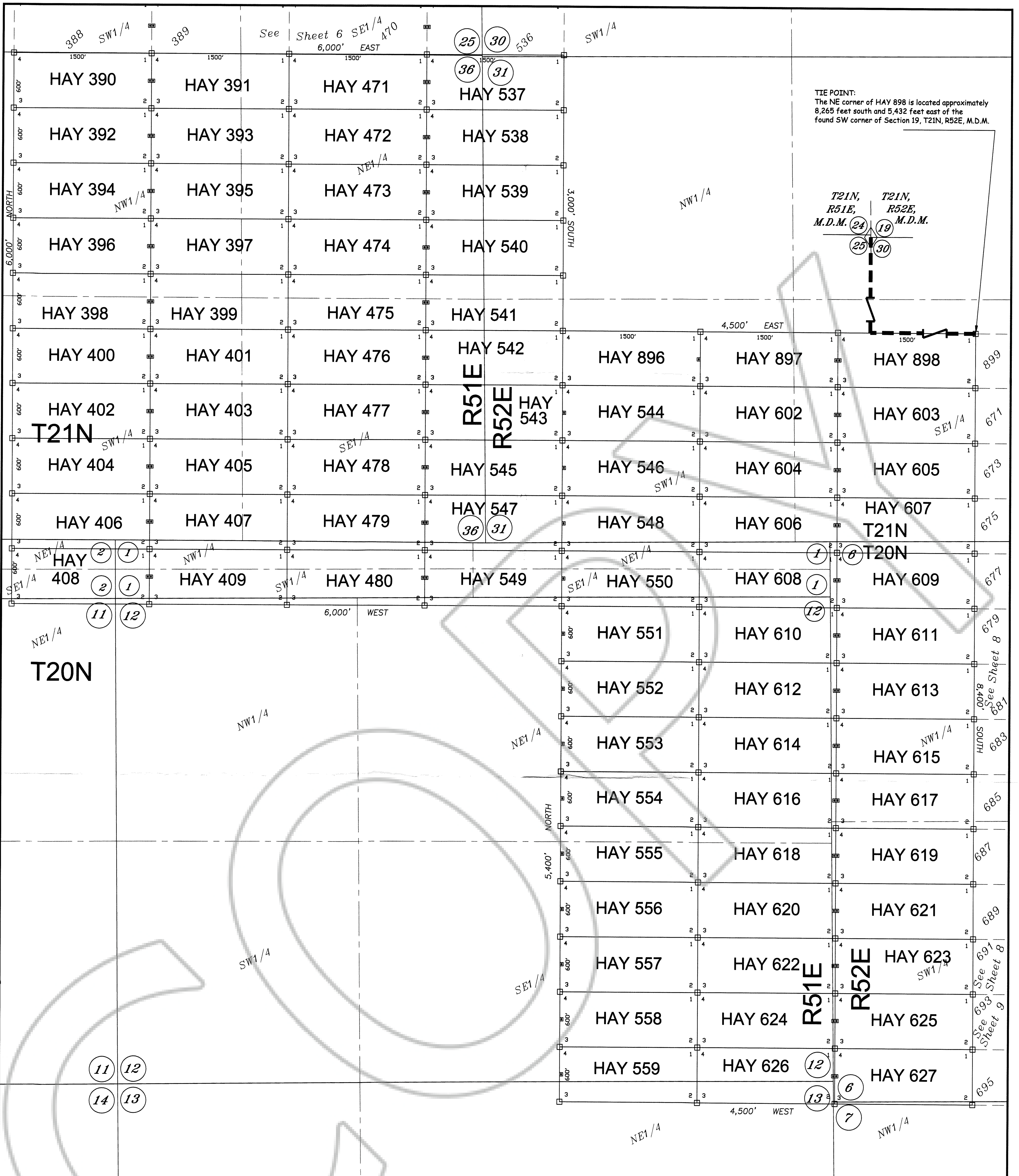
Sections 1, 2, 11-13 T20N, R51E MDM

Sections 7, 8, 17-20, 30-33 T21N, R52E MDM

Sections 4-9, 16-18 T20N, R52E MDM

Eureka County, Nevada

NEWMONT MINING CORPORATION



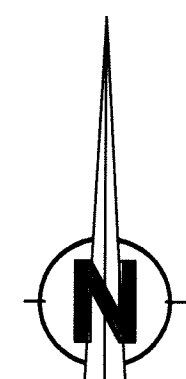
TIE POINT:
The NE corner of HAY 898 is located approximately
8,265 feet south and 5,432 feet east of the
found SW corner of Section 19, T21N, R52E, M.D.M.

LEGEND:

- = 2" x 2" x 4' WOOD POST CLAIM CORNER
- = 2" x 2" x 4' WOOD POST LOCATION MONUMENT
- ◇ = FOUND SURVEY MONUMENT

OWNER

NEWMONT USA LIMITED d/b/a
NEWMONT MINING CORPORATION
P.O. BOX 669
CARLIN, NEVADA 89822



0 500 1000 1500
1 INCH = 500 FEET

FILED AT THE REQUEST OF *Newmont Mining*
on *Aug 2* 20 *09* at *3:33* mins. past *10* P.M.
RECORDS OF EUREKA COUNTY, NEVADA M. N. REBALEATI, Recorder
File No. **190753** Fee \$ *78.10*

SHEET 7 OF 10

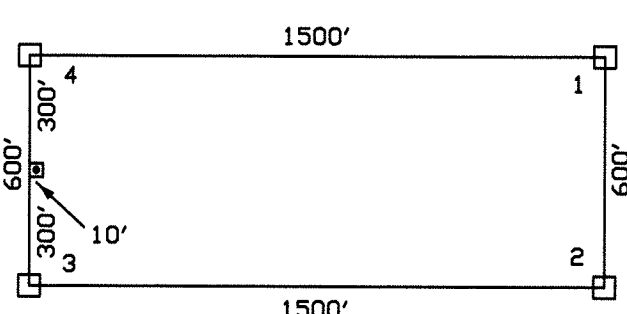
Claim Map of

HAY CLAIMS 1-521, 523-599, 602-667, 670-696, 698, 700-900
Lode Claims located within
Sections 14-17, 20-23, 25-28, 33-36 T22N, R51E MDM
Sections 1-4, 10-13, 24, 25, 36 T21N, R51E MDM
Sections 1, 2, 11-13 T20N, R51E MDM
Sections 7, 8, 17-20, 30-33 T21N, R52E MDM
Sections 4-9, 16-18 T20N, R52E MDM
Eureka County, Nevada

NEWMONT MINING CORPORATION

NOTES:

- ALL LOCATION MONUMENTS AND CLAIM CORNERS ARE 2" x 2" x 4' WOOD.
- ALL CLAIMS ARE 1500' LONG BY 600' WIDE UNLESS OTHERWISE SHOWN.
- LOCATION MONUMENTS ARE SET ON THE CENTERLINE OF EACH CLAIM,
10 FEET FROM THE NEAR ENDLINE AND 1490 FEET FROM THE OPPOSITE ENDLINE, UNLESS OTHERWISE SHOWN.
- AREA OF INTEREST CONTAINS SURVEYED, PARTIALLY SURVEYED, AND UNSURVEYED LANDS.



TYPICAL LODGE CLAIM
UNLESS OTHERWISE SHOWN
LOCATION MONUMENT MAY LIE AT EITHER END OF THE CLAIM

R52E

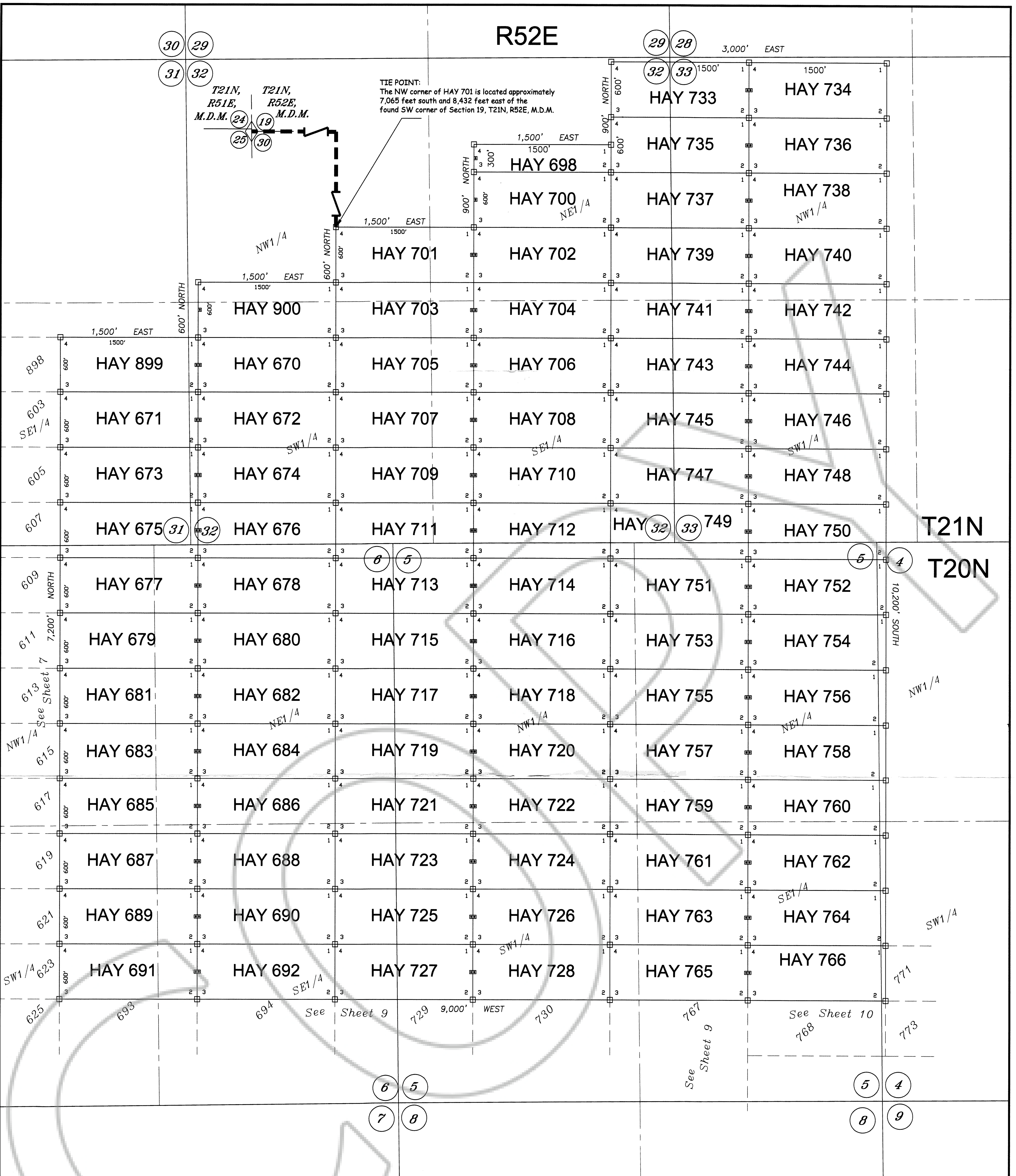
3,000' EAST

30 29
31 32

29 28
32 33

T21N, R51E, M.D.M. (24)
T21N, R52E, M.D.M. (19)

TIE POINT:
The NW corner of HAY 701 is located approximately 7,065 feet south and 8,432 feet east of the found SW corner of Section 19, T21N, R52E, M.D.M.

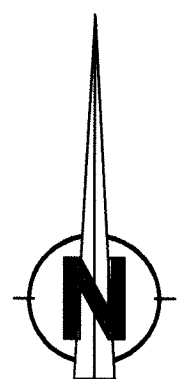


LEGEND:

- ☐ = 2" x 2" x 4' WOOD POST CLAIM CORNER
- = 2" x 2" x 4' WOOD POST LOCATION MONUMENT
- ◇ = FOUND SURVEY MONUMENT

OWNER

NEWMONT USA LIMITED d/b/a
NEWMONT MINING CORPORATION
P.O. BOX 669
CARLIN, NEVADA 89822



0 500 1000 1500
1 INCH = 500 FEET

FILED AT THE REQUEST OF *Newmont Mining*
on *Aug 7 - 20 09*, at *2:33* mins. past *1:10* P.M.
RECORDED at EUREKA COUNTY, NEVADA, M. N. REBALEATI, Recorder
File No. **190753** Fee \$ *89.70*

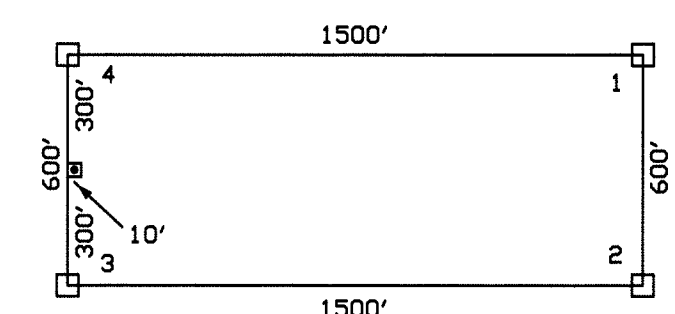
NOTES:

ALL LOCATION MONUMENTS AND CLAIM CORNERS ARE 2" x 2" x 4' WOOD.

ALL CLAIMS ARE 1500' LONG BY 600' WIDE UNLESS OTHERWISE SHOWN.

LOCATION MONUMENTS ARE SET ON THE CENTERLINE OF EACH CLAIM, 10 FEET FROM THE NEAR ENDLINE AND 1490 FEET FROM THE OPPOSITE ENDLINE, UNLESS OTHERWISE SHOWN.

AREA OF INTEREST CONTAINS SURVEYED, PARTIALLY SURVEYED, AND UNSURVEYED LANDS.



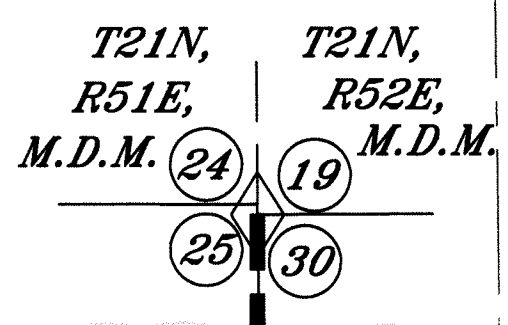
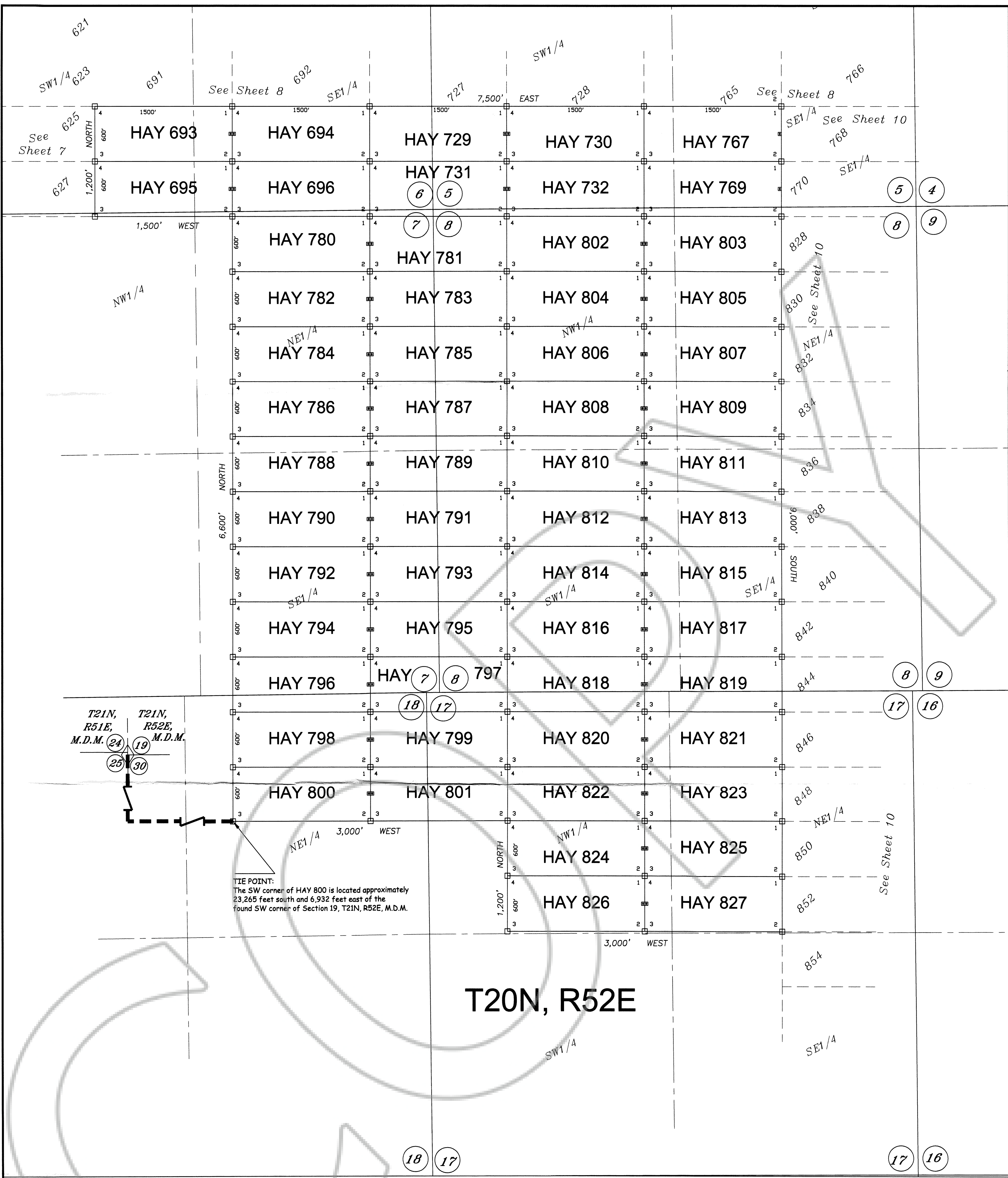
TYPICAL LODE CLAIM UNLESS OTHERWISE SHOWN

LOCATION MONUMENT MAY LIE AT EITHER END OF THE CLAIM

SHEET 8 OF 10

Claim Map of
 HAY CLAIMS 1-521, 523-599, 602-667, 670-696, 698, 700-900
 Lode Claims located within
Sections 14-17, 20-23, 25-28, 33-36 T22N, R51E MDM
Sections 1-4, 10-13, 24, 25, 36 T21N, R51E MDM
Sections 1, 2, 11-13 T20N, R51E MDM
Sections 7, 8, 17-20, 30-33 T21N, R52E MDM
Sections 4-9, 16-18 T20N, R52E MDM
 Eureka County, Nevada

NEWMONT MINING CORPORATION



TIE POINT:
 The SW corner of HAY 800 is located approximately 23,265 feet south and 6,932 feet east of the found SW corner of Section 19, T21N, R52E, M.D.M.

T20N, R52E

LEGEND:

- ☐ = 2" x 2" x 4" WOOD POST CLAIM CORNER
- = 2" x 2" x 4" WOOD POST LOCATION MONUMENT
- ◇ = FOUND SURVEY MONUMENT

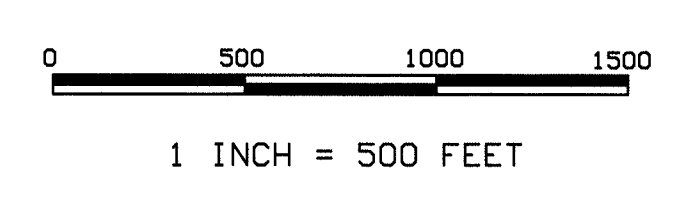
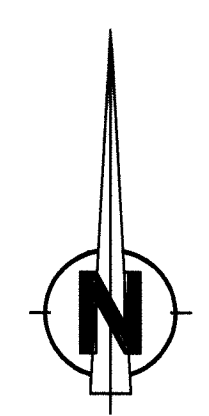
FILED AT THE REQUEST OF *Newmont Mining*
 on *Aug 2* 20 *04*, at *33* mins. past *10* A.M.
 RECORDS OF EUREKA COUNTY, NEVADA, N. REBALEATI, Recorder
 File No. **190753** Fee \$ *98.10*

NOTES:

- ALL LOCATION MONUMENTS AND CLAIM CORNERS ARE 2" x 2" x 4" WOOD.
- ALL CLAIMS ARE 1500' LONG BY 600' WIDE UNLESS OTHERWISE SHOWN.
- LOCATION MONUMENTS ARE SET ON THE CENTERLINE OF EACH CLAIM, 10 FEET FROM THE NEAR ENDLINE AND 1490 FEET FROM THE OPPOSITE ENDLINE, UNLESS OTHERWISE SHOWN.
- AREA OF INTEREST CONTAINS SURVEYED, PARTIALLY SURVEYED, AND UNSURVEYED LANDS.

OWNER

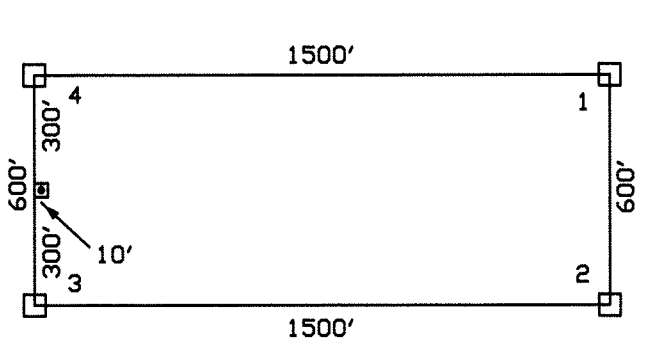
NEWMONT USA LIMITED d/b/a
 NEWMONT MINING CORPORATION
 P.O. BOX 669
 CARLIN, NEVADA 89822



SHEET 9 OF 10

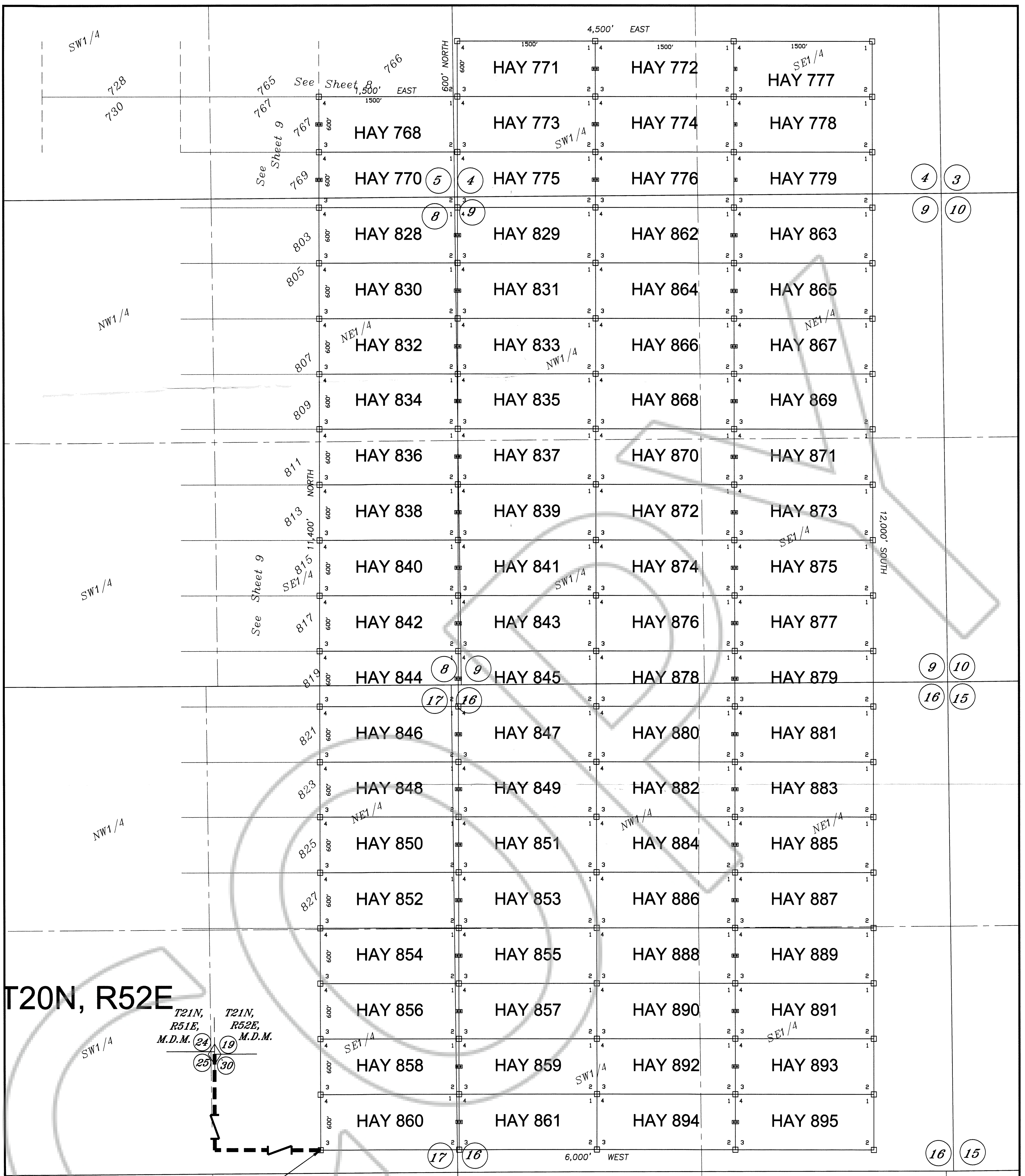
Claim Map of
 HAY CLAIMS 1-521, 523-599, 602-667, 670-696, 698, 700-900
 Lode Claims located within
Sections 14-17, 20-23, 25-28, 33-36 T22N, R51E MDM
Sections 1-4, 10-13, 24, 25, 36 T21N, R51E MDM
Sections 1, 2, 11-13 T20N, R51E MDM
Sections 7, 8, 17-20, 30-33 T21N, R52E MDM
Sections 4-9, 16-18 T20N, R52E MDM
 Eureka County, Nevada

NEWMONT MINING CORPORATION

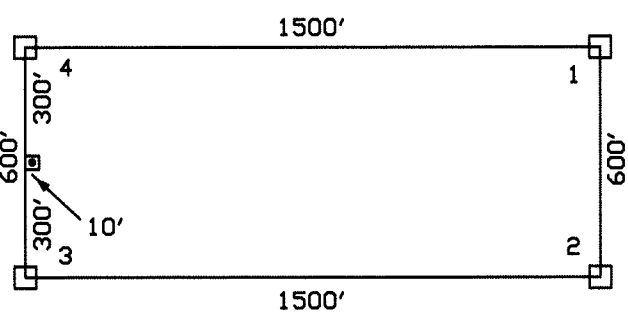
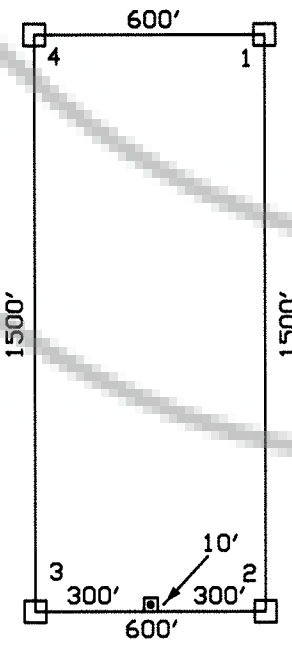


TYPICAL LODGE CLAIM
 UNLESS OTHERWISE SHOWN

LOCATION MONUMENT MAY LIE AT EITHER END OF THE CLAIM



TIE POINT:
 The SW corner of HAY 860 is located approximately
 26,865 feet south and 12,932 feet east of the
 found SW corner of Section 19, T21N, R52E, M.D.M.



TYPICAL LODGE CLAIM
 UNLESS OTHERWISE SHOWN
 LOCATION MONUMENT MAY LIE AT EITHER END OF THE CLAIM

LEGEND:

- ☐ = 2" x 2" x 4" WOOD POST CLAIM CORNER
- = 2" x 2" x 4" WOOD POST LOCATION MONUMENT
- ◇ = FOUND SURVEY MONUMENT

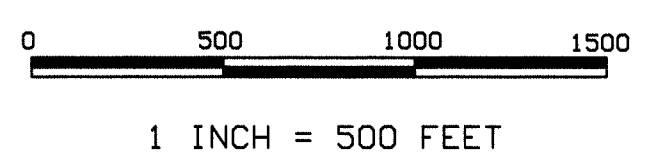
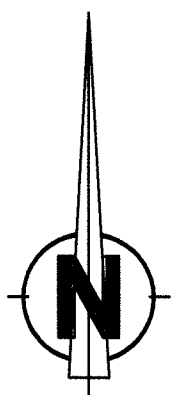
FILED AT THE REQUEST OF *Newmont Mining*
 on *Aug 2*, 20*09*, at *33* mins. past *10* P.M.
 RECORDS OF EUROKA COUNTY, NEVADA M. N. REBALEATI, Recorder
 File No. **190753** Fee \$ *108.10*

NOTES:

- ALL LOCATION MONUMENTS AND CLAIM CORNERS ARE 2" x 2" x 4" WOOD.
- ALL CLAIMS ARE 1500' LONG BY 600' WIDE UNLESS OTHERWISE SHOWN.
- LOCATION MONUMENTS ARE SET ON THE CENTERLINE OF EACH CLAIM, 10 FEET FROM THE NEAR ENDLINE AND 1490 FEET FROM THE OPPOSITE ENDLINE, UNLESS OTHERWISE SHOWN.
- AREA OF INTEREST CONTAINS SURVEYED, PARTIALLY SURVEYED, AND UNSURVEYED LANDS.

OWNER

NEWMONT USA LIMITED d/b/a
 NEWMONT MINING CORPORATION
 P.O. BOX 669
 CARLIN, NEVADA 89822



SHEET 10 OF 10

Claim Map of
 HAY CLAIMS 1-521, 523-599, 602-667, 670-696, 698, 700-900
 Lode Claims located within
Sections 14-17, 20-23, 25-28, 33-36 T22N, R51E MDM
Sections 1-4, 10-13, 24, 25, 36 T21N, R51E MDM
Sections 1, 2, 11-13 T20N, R51E MDM
Sections 7, 8, 17-20, 30-33 T21N, R52E MDM
Sections 4-9, 16-18 T20N, R52E MDM
 Eureka County, Nevada

NEWMONT MINING CORPORATION