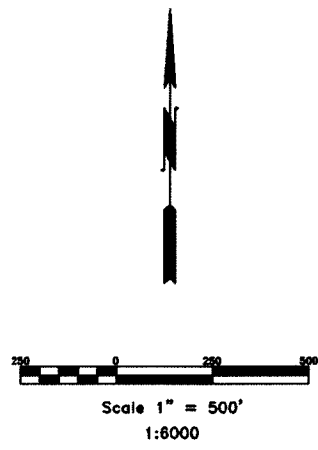
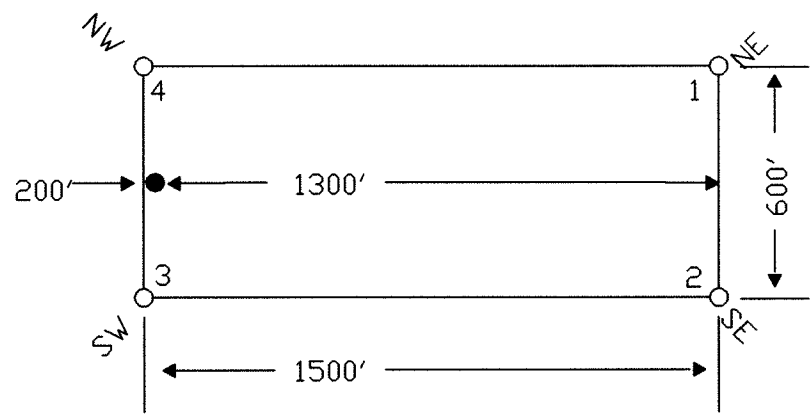


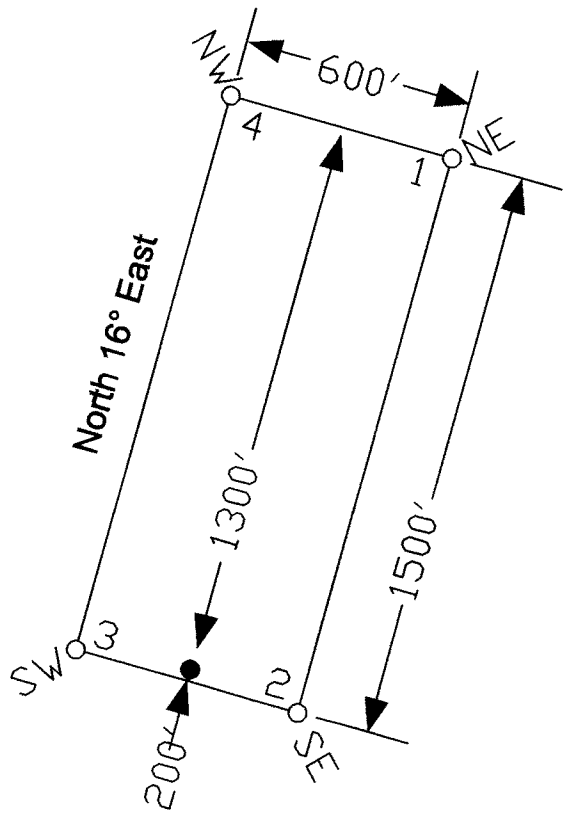
T.29N.,R.48E.  
T.29N.,R.49E.



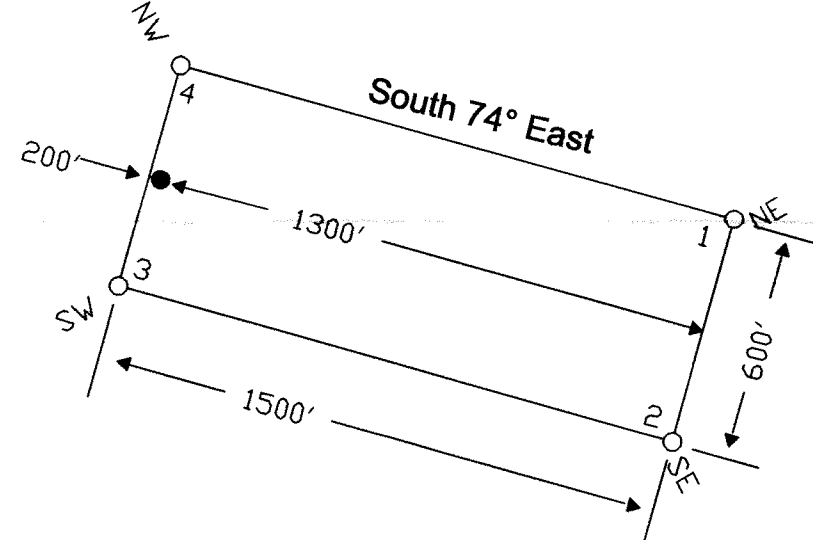
TYPICAL CLAIM



TYPICAL CLAIM



TYPICAL CLAIM



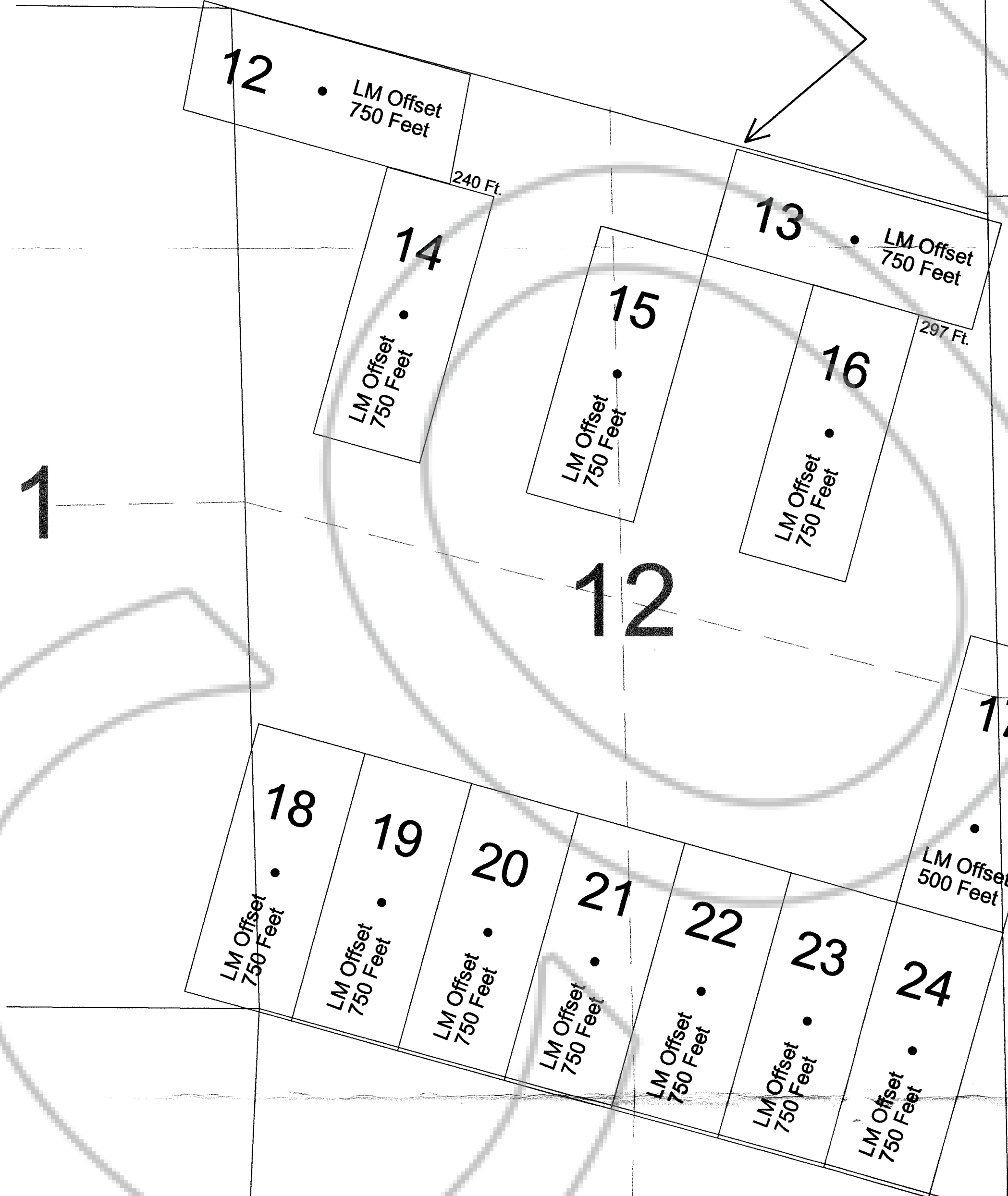
TIE POINT DATA:  
THE NORTHWEST CORNER OF HG 12 LIES APPROXIMATELY  
4,248 FEET WEST AND 1,082 FEET NORTH OF THE NORTHEAST  
CORNER OF SECTION 12, T.29N., R.48E., M.D.B.M.

TIE POINT DATA:  
THE NORTHWEST CORNER OF HG 13 LIES APPROXIMATELY  
1,361 FEET WEST AND 271 FEET NORTH OF THE NORTHEAST  
CORNER OF SECTION 12, T.29N., R.48E., M.D.B.M.

TIE POINT DATA:  
THE SOUTHWEST CORNER OF HG 1 LIES APPROXIMATELY  
1,500 FEET EAST AND 0 FEET NORTH OF THE NORTHEAST  
CORNER OF SECTION 12, T.29N., R.48E., M.D.B.M.

TIE POINT DATA:  
THE NORTHEAST CORNER OF HG 17 LIES APPROXIMATELY  
378 FEET EAST AND 2,395 FEET SOUTH OF THE NORTHEAST  
CORNER OF SECTION 12, T.29N., R.48E., M.D.B.M.

• 11
• 10
• 9
• 8
• 7
• 6
• 5
• 4
• 3
• 2
• 1



NOTES:  
LOCATION MONUMENTS SET 200' FROM CLAIM END  
CENTERLINES UNLESS NOTED ON MAP. ALL LOCATION  
MONUMENTS AND CLAIM POSTS ARE 2"x2"x4' WOODEN  
STAKES.

LOCATION DATES:  
June 9, 2004 - HG 12-24  
June 10, 2004 - HG 1-11  
(24 Total Claims)

FILED AT THE REQUEST OF *Vasquir Mines*  
on *Aug 5* 20 *04* at *3:37* mins. past *1* P.M.  
RECORDS OF EUREKA COUNTY, NEVADA M. N. REBALEATI, Recorder  
File No. *190792* Fee \$ *364.00*

	Location: <b>Vasquir Mines Inc.</b> 559 W. Silver Street, Ste 301, Elko, NV 89801 HG 1-24 Lode Claims T.29N.,R.48&49E.; Eureka County, Nevada
	DATE: August 2004 DRAWN BY: sms