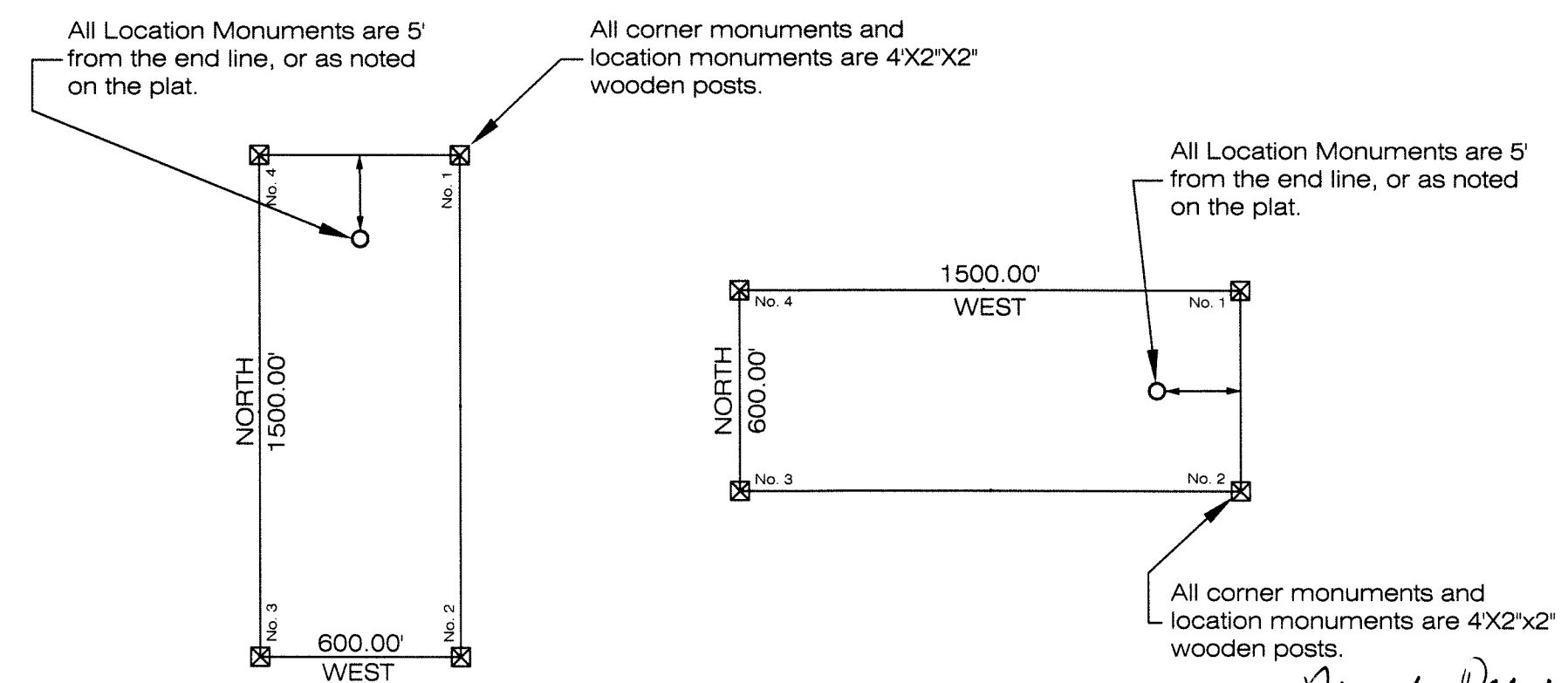


**SURVEYOR'S CERTIFICATE**  
I, John D. Harmering, A Professional Land Surveyor (PLS 12062) Licensed in The State Of Nevada, certify that:

- 1) This plat represents the results of a survey conducted under my direct supervision at the instance of Nevada Pacific Gold (U.S.), Inc., a Nevada Corp.
- 2) The mining claims surveyed lie within T24 N, R48 E, Sections 25, 36 and T23 N, R48 E, Section 1 and T23N, R49E, Section 6, and T24N, R48 1/2E, Section 36, and T23 1/2N, R49E, Section 6 all within MDM; and the survey was completed on July 20, 2004
- 3) This plat complies with applicable statutes of this state and any local ordinances in effect on the date that the survey was completed, and the survey was conducted in accordance with Chapter 625 of the Nevada Administrative Code.
- 4) The monuments depicted on the plat are of the character shown, occupy the positions indicated and are of sufficient number and durability.

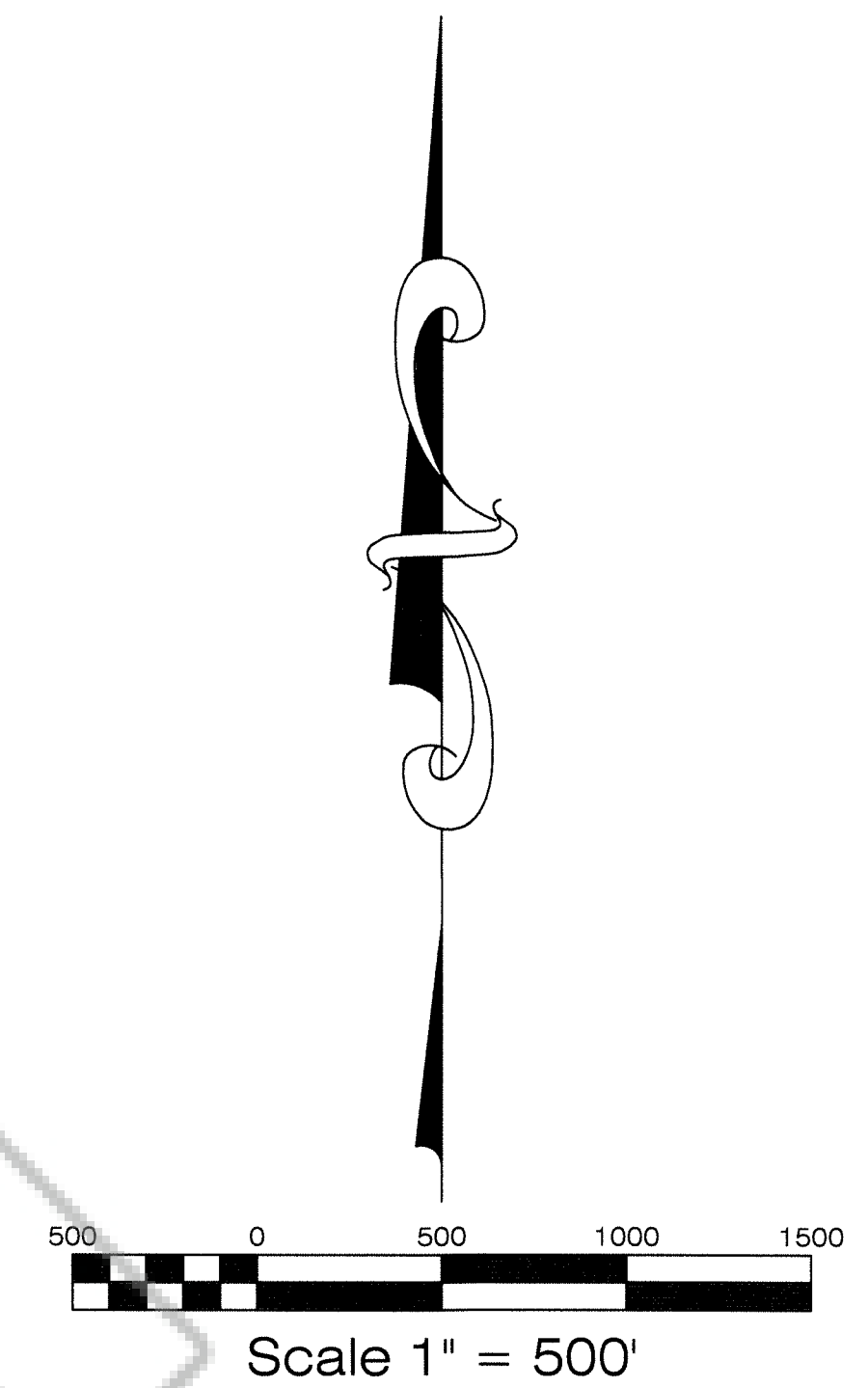
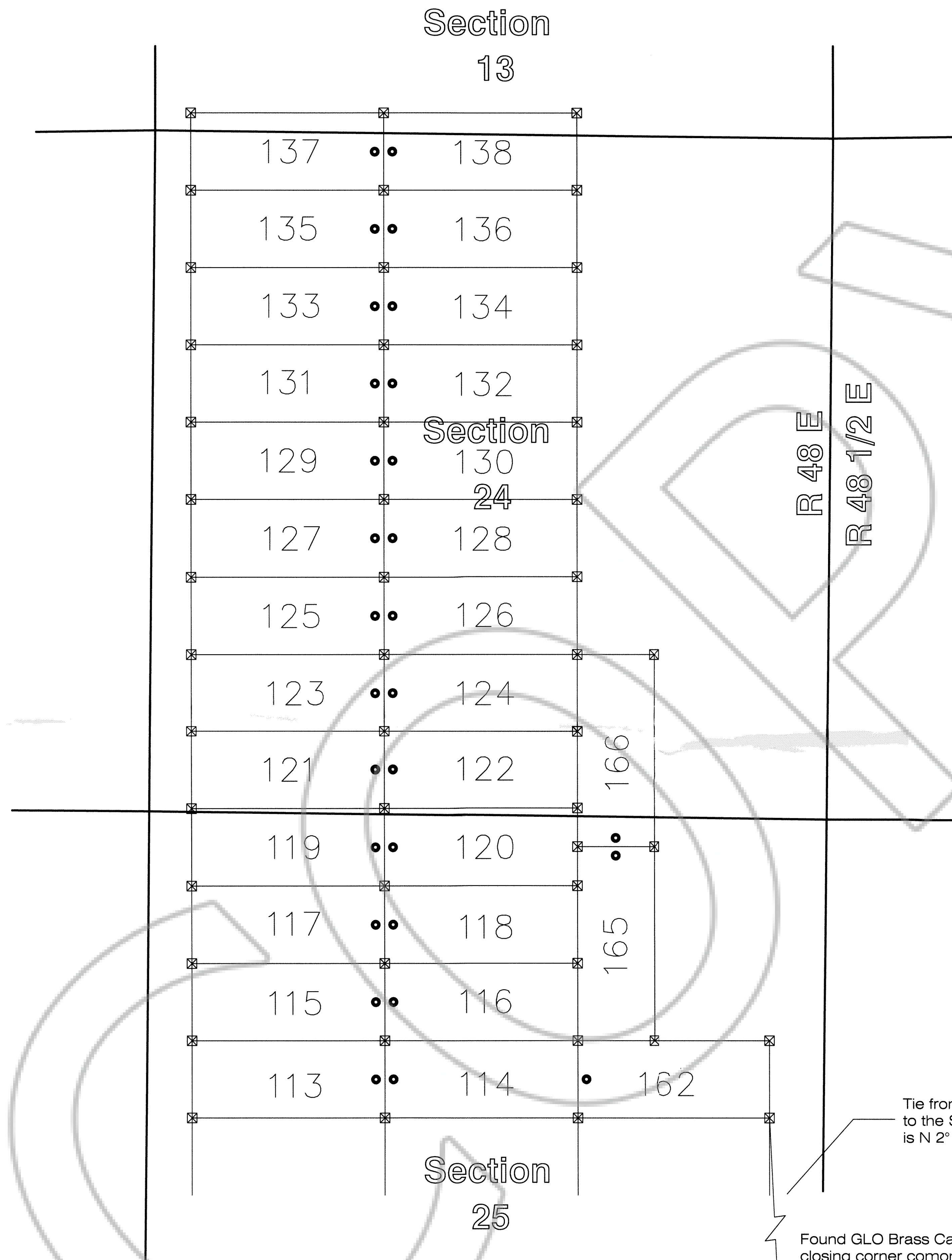
Claims 85 - 112 Located June 3, 2004  
Claims 139 - 161, 163, 164 Located June 17, 2004

Typical Claim  
unless otherwise noted



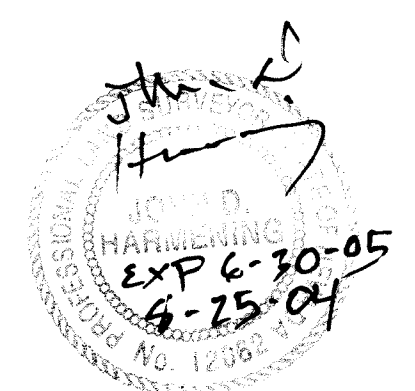
FILED AT THE REQUEST OF Nevada Pacific Gold  
on Aug 27 2004, at 26 mins past 30 M.  
RECORDED OF EUREKA COUNTY, NEVADA M. N. REBALEATI, Recorder  
File No. 191825 Fee \$ 242



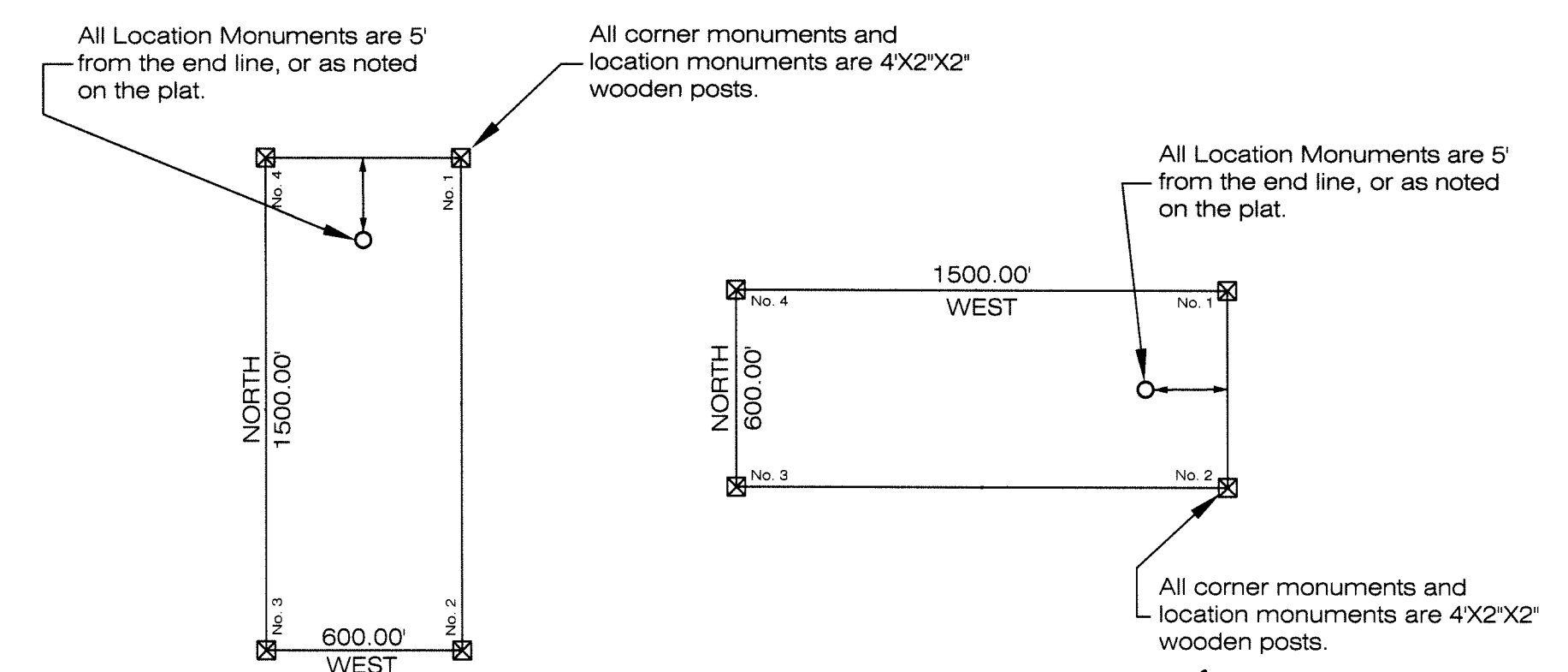


**SURVEYOR'S CERTIFICATE**

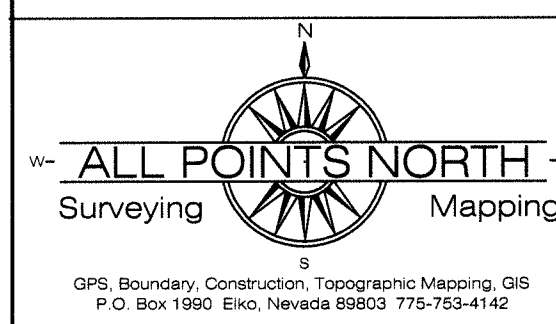
- I, John D. Harmering, A Professional Land Surveyor (PLS 12062) Licensed in The State Of Nevada, certify that:
- 1) This plat represents the results of a survey conducted under my direct supervision at the instance of Nevada Pacific Gold (U.S.), Inc. a Nevada Corp.
  - 2) The mining claims surveyed lie within T24 N, R48 E, MDM, Sections 13, 24, 25 and the survey was completed on July 20, 2004
  - 3) This plat complies with applicable statutes of this state and any local ordinances in effect on the date that the survey was completed, and the survey was conducted in accordance with Chapter 625 of the Nevada Administrative Code.
  - 4) The monuments depicted on the plat are of the character shown, occupy the positions indicated and are of sufficient number and durability.



Typical Claim  
unless otherwise noted



FILED AT THE REQUEST OF *Nevada Pacific Gold*  
on *Aug 27* 20 *04*, at *2:42* mins. past *3* P.M.  
RECORDS OF EUREKA COUNTY, NEVADA M. N. REBALEATI, Recorder  
File No. *191825* Fee \$ *234.00* 182



All Points North  
P.O. Box 1990  
Elko, Nevada 89803

Claims in T24 N, R48 E, MDM, Sections 13, 24, and 25  
Claims 113 - 138 Located June 3, 2004  
Claims 162, 165, 166 Located June 17, 2004

Map Of:  
CHS Lode Claims # 113-138  
CHS Lode Claims # 162  
CHS Lode Claims # 165, 166  
Eureka County, Nevada

Located For:  
Nevada Pacific Gold (US), Inc a Nevada Corp.  
P.O. Box 548  
Elko, Nevada 89803