

The SE Corner of CSAMT 32 bears N43°25'E and is 5829' from the SW corner of Section 19 T22N R50E

The NW Corner of CSAMT 65 bears N43°25'E and is 5829' from the SW corner of Section 19 T22N R50E

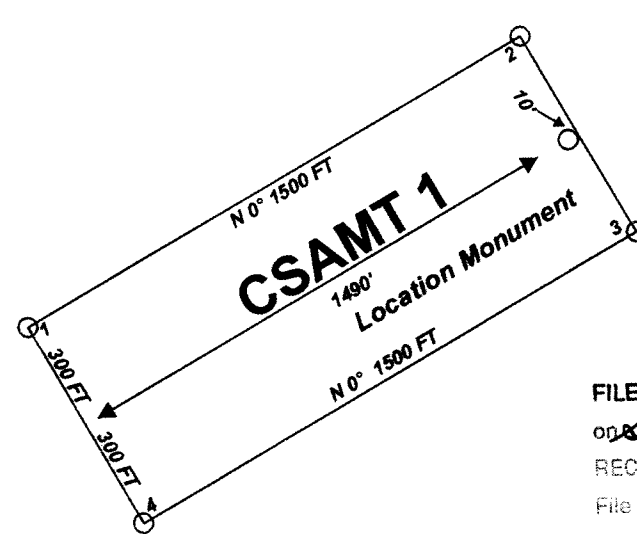
Claim Location Map for CSAMT 1-95
Map 1 of 2

"CSAMT" lode claims 1 - 32 were located on June 9, 2004 and "CSAMT" lode claims 33 - 66 were located on June 10, 2004 and "CSAMT" lode claims 79 - 86 and 92 - 95 were located on June 11, 2004 and "CSAMT" lode claims 67 - 78 and 87 - 91 were located on July 12, 2004 in Sections 12-13 and 24 Township 22 North Range 49 East and in Sections 7, 17-20 and 29-30 Township 22 North Range 50 East Eureka County, Nevada

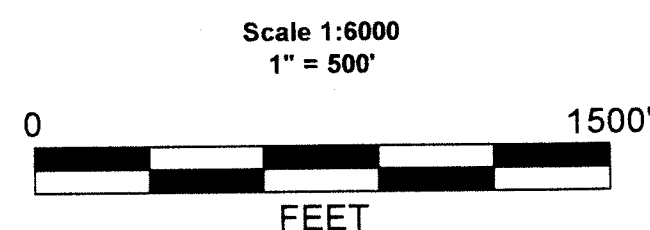
Locator:
 White Knight Gold (U.S.) Inc.
 121 Woodland Ave Suite 140
 Reno Nv. 89523

Notes:
 Location Monuments are set 10' from claim end lines unless noted otherwise. All location and corner monuments are 2" X 2" X 4' wooden posts with scribed metal tags. All claims are 600' by 1500' unless noted otherwise.

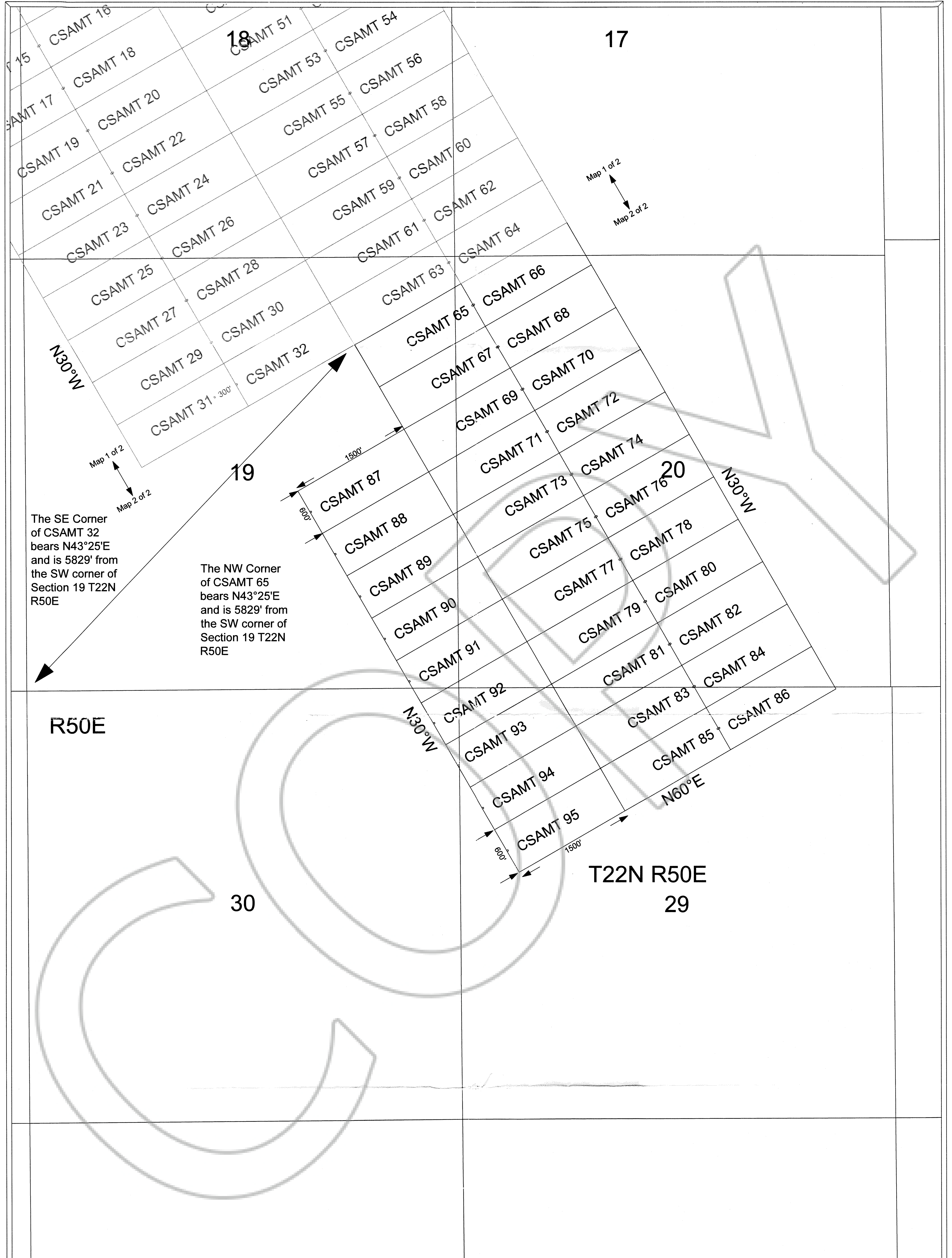
Typical Claim



FILED AT THE REQUEST OF *White Knight Gold*
 on *Sept 3* 20 *04* at *21* mins past *10* P.M.
 RECORDS OF EUREKA COUNTY, NEVADA M. N. REBALEATI, Recorder
 Fee \$ *1429.00*
191958



MINING CLAIM LOCATION MAP
CSAMT 1 - 95
Lode Mining Claims
White Knight Gold (U.S.) Inc.
121 Woodland Ave Suite 140
Reno Nv. 89523
CSAMT_1_55.dwg
August 18, 2004
Drawn By: G.I.S. Land Services
Surveyed By: T&T Exploration L.L.C.
Datum: 1927 Projection: UTM Zone 11
Units: Feet



The SE Corner of CSAMT 32 bears N43°25'E and is 5829' from the SW corner of Section 19 T22N R50E

The NW Corner of CSAMT 65 bears N43°25'E and is 5829' from the SW corner of Section 19 T22N R50E

Map 1 of 2
Map 2 of 2

Map 1 of 2
Map 2 of 2

R50E

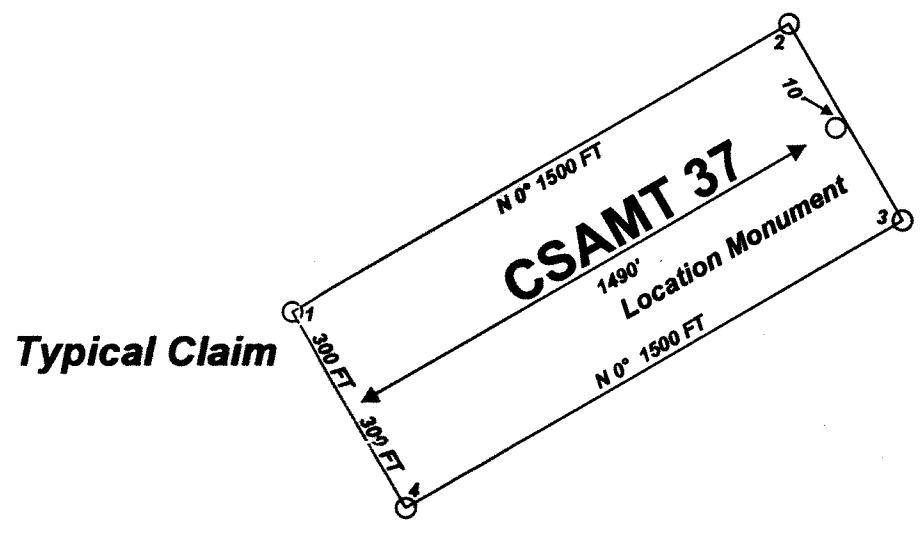
T22N R50E
29

"CSAMT" lode claims 1 - 32 were located on June 9, 2004 and "CSAMT" lode claims 33 - 66 were located on June 10, 2004 and "CSAMT" lode claims 79 - 86 and 92 - 95 were located on June 11, 2004 and "CSAMT" lode claims 67-78 and 87 - 91 were located on July 12, 2004 in Sections 12-13 and 24 Township 22 North Range 49 East and in Sections 7, 17-20 and 29-30 Township 22 North Range 50 East Eureka County, Nevada

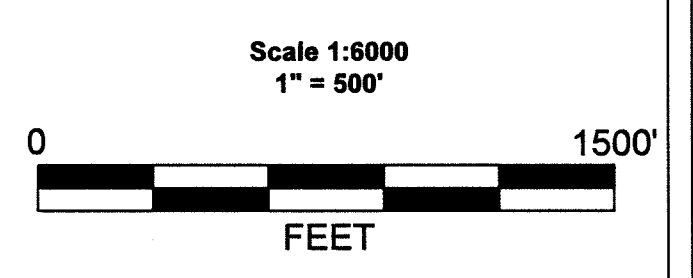
Locator:
White Knight Gold (U.S.) Inc.
121 Woodland Ave Suite 140
Reno Nv. 89523

Notes:
Location Monuments are set 10' from claim end lines unless noted otherwise. All location and corner monuments are 2" X 2" X 4' wooden posts with scribed metal tags. All claims are 600' by 1500' unless noted otherwise.

Claim Location Map for CSAMT 1-95
Map 2 of 2



FILED AT THE REQUEST OF *White Knight Gold*
on *Sept 3 2004* at *2:17* miles past *1 P.M.*
RECORDS OF EUREKA COUNTY, NEVADA M. N. REBALEATI, Recorder
File No. **191958** Fee \$ *1427.00*



MINING CLAIM LOCATION MAP
CSAMT 1 - 95
Lode Mining Claims
White Knight Gold (U.S.) Inc.
121 Woodland Ave Suite 140
Reno Nv. 89523
CSAMT_1_95.dwg
August 18, 2004
Drawn By: G.I.S. Land Services
Surveyed By: T&T Exploration L.L.C.
Datum: 1927 Projection: UTM Zone 11
Units: Feet