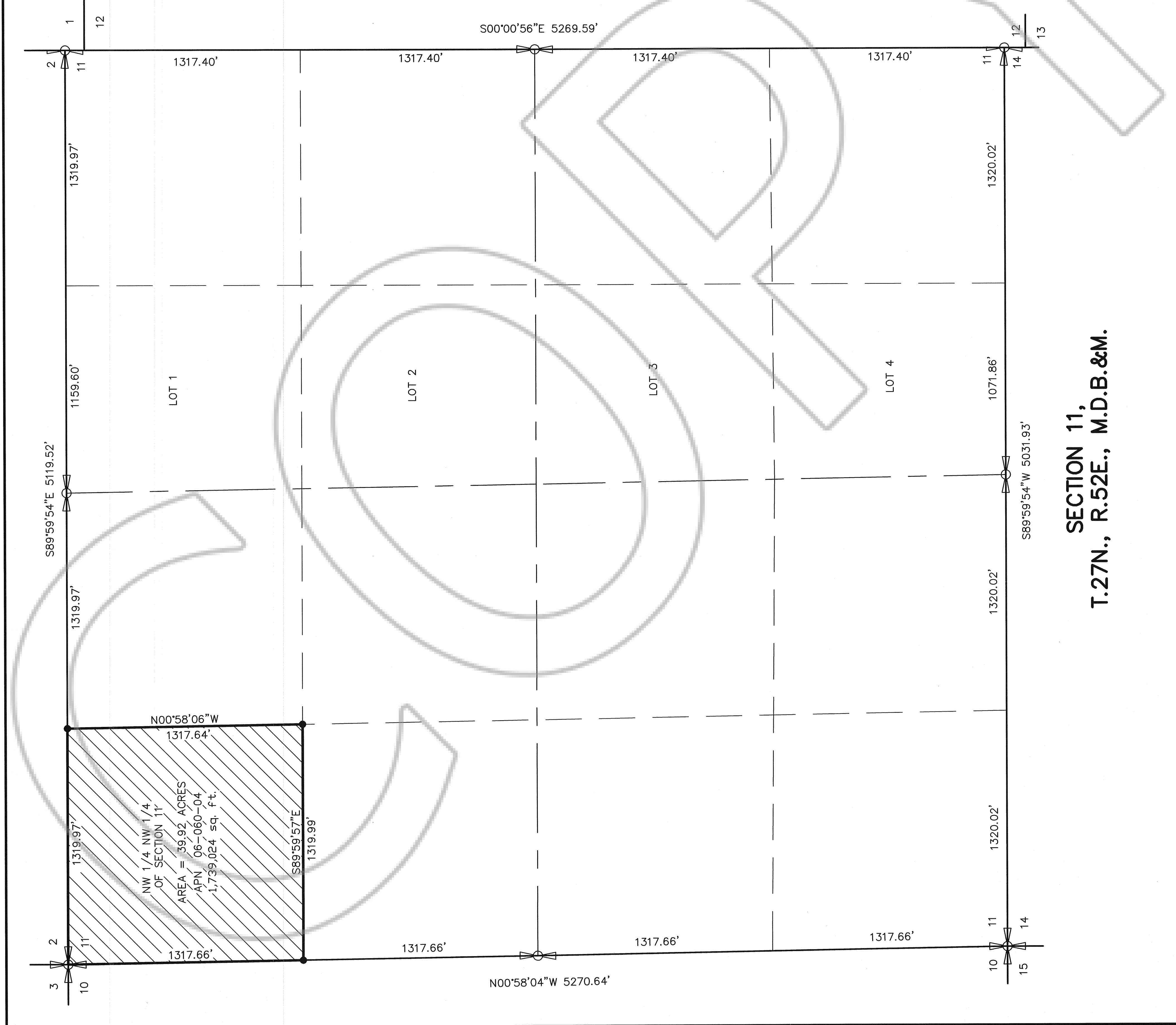


DRAWING NUMBER

DRAWING NUMBER

DRAWING NUMBER
192533

DRAWING NUMBER
R05
T27N R52E Sec 11
Leroy Sestanovich, Eureka



LEGEND

- SET 5/8" STEEL PIN IN THE GROUND, TOPPED WITH A PLS 2161 YELLOW CAP. SET 5" STEEL GUARD POST.
- 1/4 CORNER 1924 GLO BRASSCAP.
- ⊕ SECTION CORNER 1924 GLO BRASSCAP.
- ⊕ SECTION CORNER 1924 GLO BRASSCAP.

TRUE NORTH

BASIS OF BEARING:
LINE FROM W 1/4 CORNER OF SECTION 11 TO THE NW CORNER OF SECTION 11 TAKEN AS IN 058'04" W FROM THE EXHIBITED 1928 GENERAL LAND OFFICE SURVEY PLAT.

LAND SURVEYOR'S CERTIFICATE

I, CHARLES C. ARMUTH, JR., A PROFESSIONAL LAND SURVEYOR LICENSED IN THE STATE OF NEVADA, HEREBY CERTIFY THAT THIS PLAT IS A TRUE AND ACCURATE MAP OF THE LAND SURVEYED UNDER MY SUPERVISION AND DIRECTION ON THE 21st DAY OF AUGUST, 2004, AND THAT SAID SURVEY IS FULLY AND CORRECTLY DESIGNATED THEREIN. SURVEY MADE AT THE INSTANCE OF LEROY SESTANOVICH. SURVEY COMPLETED ON THE 21st DAY OF AUGUST, 2004.

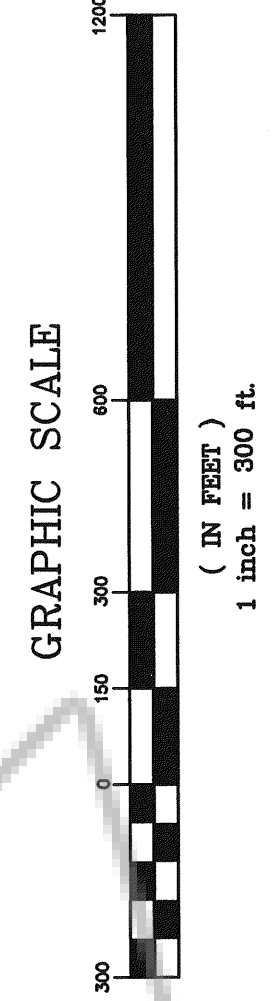
CHARLES C. ARMUTH, JR., P.E., P.L.S.
NEVADA REGISTRATION No. 2161
421 RAILROAD STREET
EKL, NEVADA 89801
PH. (702) 738-7369
FAX (702) 738-7368
E-MAIL: armuth@cthis.com

STATE OF NEVADA
PROFESSIONAL
LAND SURVEYOR
CHARLES C. ARMUTH, JR.
9-20-04
EXPIRES 12-31-04

RECORDER'S CERTIFICATE

FILE NO. 192533
FILED AT THE REQUEST OF CHARLES C. ARMUTH, JR.
DATE: Sept 21, 2004
TIME: 1:06 P.M.

M.M. Rebaleati
EUREKA COUNTY RECORDER



RECORD OF SURVEY
FOR
LEROY SESTANOVICH
OF
NW 1/4 NW 1/4 OF SECTION 11,
T.27N., R.52E., M.D.B.&M.
EUREKA COUNTY, NEVADA

SECTION 11,
T.27N., R.52E., M.D.B.&M.